

MAZE CONCERTEX

Fabrics » Woven Fabrics



Brand: **Tekloom**

Applications: **Upholstery**

1300 306 399

info@baresque.com.au

baresque.com.au

1 of 5

MAZE CONCERTEX

Fabrics » Woven Fabrics



MAZE CONCERTEX

Fabrics » Woven Fabrics

Lose yourself in Maze's whimsical woven texture and vibrant colours! This durable, water-resistant fabric is perfect for any adventure.

✓ **Bleach Cleanable**

✓ **Graffiti-Free**

✓ **HPD Certified**

✓ **PVC-Free**

✓ **Phthalate Free**

Description

Get lost and find wonder in the nostalgic nature of Maze. Maze is a fused woven textile with Tekloom® technology designed to take you on an adventure.

No matter where you place Maze, this outstanding performance fabric with an impermeable surface and one million double rubs will not only last but will also pop with seven fun colours that will brighten up any interiors.

Composition

88% Polyester, 12% Tekloom TPE (Graffiti-Free)

Backing: Acylic

Environmental Info

PVC/Phthalates free

No added fire retardant

Healthier Hospitals compliant

Pattern Repeat Size

10.8 cm V / 18.4 cm H

Roll Size

137cm x 45.7m - Available by the lineal metre

Abrasion

1,000,000+ Double Rubs (Wyzenbeek)

Fire Rating

Tested in accordance with AS1530.3

Spread of Flame Index - 0

Smoke Developed Index - 4

Lead Time

- 2-weeks (approx.) from Wednesday, subject to stock availability.
- Additional 1-week for Western Australia.
- Express delivery is available subject to a surcharge. Contact Baresque for details and pricing.

MAZE CONCERTEX

Fabrics » Woven Fabrics

Care Instructions

While Tekloom® is inherently stain resistant, it is important to keep it clean at all times to maintain the original look and feel. Spot cleaning with a clean, soft towel with clean water will remove most of the everyday stains.

Cleaning Code: W/S, Bleach (10:1), Dry Care™

DISINFECTION

Tekloom can be disinfected with a 10:1 bleach dilution of water/bleach.

Apply the solution using a misting spray bottle and gently scrub the affected area with a sponge or soft bristle brush. Allow the mixture to linger for the time specified by the facility.

Avoid soaking the seamed area to prevent the bleach from penetrating thru the protective layer.

Rinse all cleaning agents thoroughly with water and wipe with a soft cloth

Residue left by cleaning agents will degrade and shorten the life and/or affect the product's appearance if not removed.

Always test in an inconspicuous area first.

Warranty

2-year warranty. Visit baresque.com.au/warranty for complete details.

MAZE CONCERTEX

Fabrics » Woven Fabrics

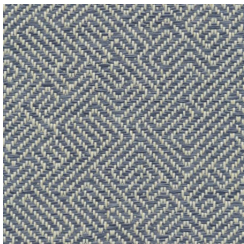
Colour & Finish Options

COLOURWAY CARD

COLOURWAY CARD



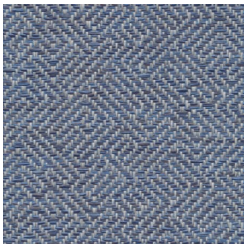
AMAZON



ATLANTIS



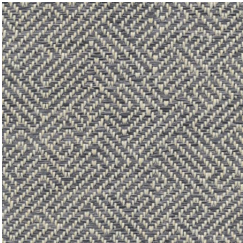
CORN



LAPIS



ROSE



SLATE



STONE



WHEAT