

ALEMERIA IMPERIALIS

Wallcoverings » Decorative Wallcoverings



Brand: **Omexco**

Applications: **Walls**

1300 306 399

info@baresque.com.au

baresque.com.au

1 of 5

ALEMERIA IMPERIALIS

Wallcoverings » Decorative Wallcoverings



ALEMERIA IMPERIALIS

Wallcoverings » Decorative Wallcoverings

Chequered marquetry pattern inspired by the renaissance period. 3 colourways with 2 contrasting shades available, creating a striking graphic effect

✓ Sustainable

✓ Seamless Joins

✓ Light Resistant

Description

IMPERIALIS COLLECTION

Paulownia, The Imperial Tree

Opulent marquetry designs craft from exquisite wood.

The Paulownia tree, originally known as Kiri, was initially discovered in Japan. It made its way to Europe in 1835 through the efforts of Philipp Franz von Siebold, a renowned collector of Japanese plants. In recognition of Imperial Grand Duchess Anne Pavlovna's contribution to botany, von Siebold bestowed the tree with a new name, Paulownia.

The Imperialis collection presents a wide array of opulent marquetry designs crafted from this exquisite wood.

In various art deco patterns, the wood veneer is delicately placed against a gilded backdrop.

The wood is also used in its purest form to showcase the elegance of uncomplicated geometries.

Composition

Wood veneer

Environmental Info

The materials contained in these wallcoverings are naturally occurring and renewable resources harvested from farms and coloured with water-based inks.

Pattern Repeat Size

46 cm and the design as a straight match

Roll Size

91cm wide - Available by the lineal metre

Weight

350 g/m²

Fire Rating

Tested in accordance with AS ISO 9705 2003 for the purpose of determining the Group Number classification as required by the Building Code of Australia for the control of fire spread on interior wall and ceiling linings.

The result achieved was:

Classification - Group 2

Specific Extinction - Less than 250m²/kg

ALEMERIA IMPERIALIS

Wallcoverings » Decorative Wallcoverings

Lead Time	<ul style="list-style-type: none">• 2-weeks (approx.) from Wednesday, subject to stock availability.• Additional 1-week for Western Australia.• Express delivery is available subject to a surcharge. Contact Baresque for details and pricing.
-----------	---

Suggested Installation	<p>Non-reverse hang / butt join.</p> <p>If your order contains several numbered rolls of one single item/ reference, please first install the roll with the highest number, and then continue to install the other rolls in sequence, in descending order.</p> <p>Measure and cut 3 strip lengths. Add 5 to 10 cm to top and bottom of each strip.</p> <p>For printed patterns, plan your match from the roll before cutting</p> <p>Mark each strip coming from the roll on the back and hang in the same sequence</p> <p>Reverse alternate lengths when instructed to do so by label on the roll</p>
------------------------	---

Care Instructions	<p>Natural wallcoverings should be handled with care, as they are not stain repellent treated.</p> <p>Remove liquid stains immediately using a clean, white, soft, dry cloth tapping on the wallcovering lightly.</p> <p>Use a vacuum cleaner to lightly remove any dust that may have collected.</p> <p>Cleaning with water or detergent is not recommended.</p> <p>Always test in an inconspicuous area first. If care instructions don't deliver the expected results, cease cleaning method immediately and contact Baresque for assistance.</p>
-------------------	--

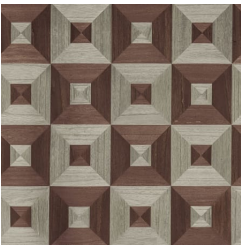
Warranty	2-year warranty. Visit baresque.com.au/warranty for complete details.
----------	--

Additional Comments	<p>The marqueteries in this collection are made of genuine wood veneer. The typical wood structure, with its grains, irregularities and dots, is clearly visible, and is part of the charm and unique character of this wallcovering.</p> <p>Delicate wallcovering. Never allow glue nor water to get on front of the wallcovering.</p>
---------------------	---

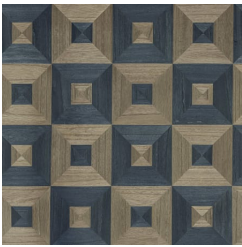
ALEMERIA IMPERIALIS

Wallcoverings » Decorative Wallcoverings

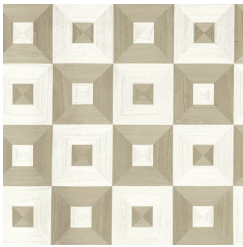
Colour & Finish Options



IM 41



IM 42



IM 43