

# DOURO

Wallcoverings » Commercial Wallcoverings

---



Brand: **Versa**

Applications: **Walls**

1300 306 399

[info@baresque.com.au](mailto:info@baresque.com.au)

[baresque.com.au](http://baresque.com.au)

1 of 4

# DOURO

Wallcoverings » Commercial Wallcoverings

Douro is a heavy-duty commercial wallcovering with exceptional resistance to tearing and pulling. It's PVC-free and made of 30% recycled content

✓ Bleach Cleanable

✓ Low VOC

✓ EPD Certified

✓ HPD Certified

✓ PVC-Free

## Description

Reminiscent of corded fabric, Douro is a polished and refined stria created by a deep vertical emboss.

The simplicity coupled with the depth of the surface produces a design that is both modern and classic.

The 12-SKU colour palette of sleek neutrals and bright pops of colour is enhanced by a metallic sheen. PVC-free Olefin composite; 30% recycled content; Type III 33 oz.; Drill backing; reverse hang / random match installation.

## Composition

Vinyl face on drill backing 33oz (745g/m<sup>2</sup>)

## Environmental Info

Versa's range of PVC wallcoverings is manufactured from 20% recycled content.

- Free of antimicrobials
- Phthalate free
- Heavy metal free
- Low VOC emitting
- CA 01350 complaint
- Free of toxic flame retardants
- Formaldehyde free
- BPA Free

## Pattern Repeat Size

Not Applicable

## Roll Size

132/137cm x 27.4m - Available by the lineal metre.

## Weight

745 (g/m<sup>2</sup>)

## Fire Rating

Tested in accordance with AS ISO 9705 2003 for the purpose of determining the Group Number classification as required by the Building Code of Australia for the control of fire spread on interior wall and ceiling linings.

Classification - Group 3  
Specific Extinction - Less than 250m<sup>2</sup>/kg

Lead Time	<ul style="list-style-type: none"><li>• 2-weeks (approx.) from Wednesday, subject to stock availability.</li><li>• Additional 1-week for Western Australia.</li><li>• Express delivery is available subject to a surcharge. Contact Baresque for details and pricing.</li></ul>
-----------	---

---

Suggested Installation	<p>Reverse hang / overlap and double cut.</p> <p>Baresque recommends and supply Roman brand adhesives and primers.</p>
------------------------	--

---

Care Instructions	<p>Always use a clean, white, soft cloth.</p> <p>Use cloth with any of the following in preferred order of use:</p> <ol style="list-style-type: none"><li>1: Clear warm water</li><li>2: Mild solution of liquid detergent and warm water</li><li>3: Isopropyl Alcohol (a.k.a. rubbing alcohol)</li></ol> <p>Remove any detergent with a clean, damp cloth. Gently pat dry.</p> <p>For more difficult stains, dampen a soft white cloth with a solution of household bleach (10% bleach / 90% water). Rub gently.</p> <p>Rinse with a water dampened cloth to remove bleach concentration.</p> <p>DO NOT USE solvent based or concentrated abrasive cleaning agents, lacquer thinners, nail polish remover as these may cause discolouration over a period of time.</p> <p>Always test in an inconspicuous area first. If care instructions don't deliver the expected results, cease cleaning method immediately and contact Baresque for assistance.</p>
-------------------	--

---

Warranty	5-year warranty. Visit <a href="https://baresque.com.au/warranty">baresque.com.au/warranty</a> for complete details.
----------	--

---

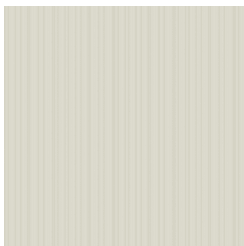
# DOURO

Wallcoverings » Commercial Wallcoverings

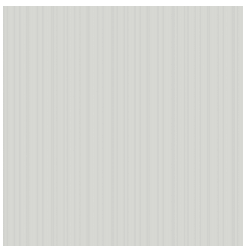
## Colour & Finish Options

### COLOURWAY CARD

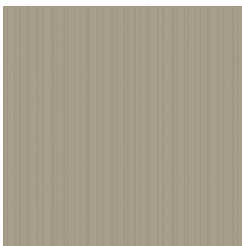
COLOURWAY CARD



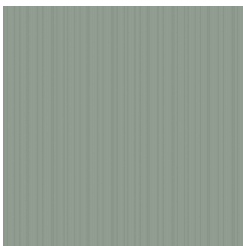
AVF25-018 MOMENTO



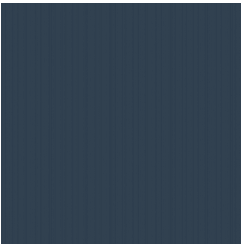
AVF25-023 BLANK  
SLATE



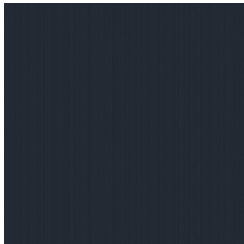
AVF25-172 FRONT  
PORCH



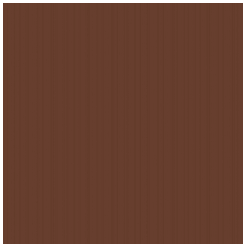
AVF25-205 NORTH  
DELL



AVF25-363  
BRILLIANCE



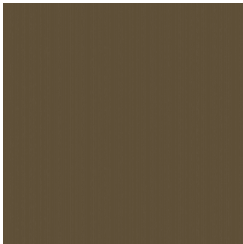
AVF25-399 GREAT  
DEPTHS



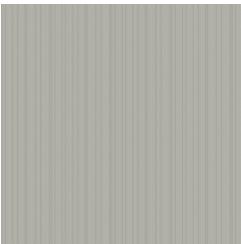
AVF25-541  
ALPENGLOW



AVF25-610 TOFFEE



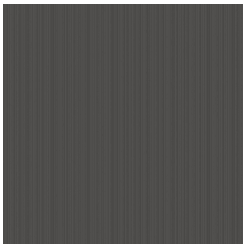
AVF25-622  
HIGHLAND



AVF25-809 WHISPER



AVF25-834  
BACKDROP



AVF25-867 UP THE  
ROAD