

# TERRAMO

Wallcoverings » Commercial Wallcoverings

---



Brand: **Versa**

Applications: **Walls**

1300 306 399

[info@baresque.com.au](mailto:info@baresque.com.au)

[baresque.com.au](http://baresque.com.au)

1 of 4

# TERRAMO

Wallcoverings » Commercial Wallcoverings

Terramo is a heavy-duty commercial wallcovering with exceptional resistance to tearing and pulling. It's PVC-free and made of 30% recycled content.

✓ Bleach Cleanable

✓ Low VOC

✓ EPD Certified

✓ HPD Certified

✓ PVC-Free

## Description

Terramo is a modern, modular design comprised of interlocking squares in varying configurations.

The deeply embossed rectilinear forms produce an engaging and architectural effect on the wall.

Available in 12 colorways, Terramo has a reflective quality with luxe neutrals and bold colours in both warm and cool tones. PVC-free Olefin composite; 30% recycled content; Type III 33 oz.; Drill backing; reverse hang / random match installation.

## Composition

Vinyl face on drill backing 33oz (745g/m<sup>2</sup>)

## Environmental Info

Versa's range of PVC wallcoverings is manufactured from 20% recycled content.

- Free of antimicrobials
- Phthalate free
- Heavy metal free
- Low VOC emitting
- CA 01350 complaint
- Free of toxic flame retardants
- Formaldehyde free
- BPA Free

## Pattern Repeat Size

Not Applicable

## Roll Size

132/137cm x 27.4m - Available by the lineal metre.

## Weight

745 g/m<sup>2</sup>

## Fire Rating

Tested in accordance with AS ISO 9705 2003 for the purpose of determining the Group Number classification as required by the Building Code of Australia for the control of fire spread on interior wall and ceiling linings.

Classification - Group 3  
Specific Extinction - Less than 250m<sup>2</sup>/kg

# TERRAMO

Wallcoverings » Commercial Wallcoverings

---

|           |   |
|-----------|---|
| Lead Time | <ul style="list-style-type: none"><li>• 2-weeks (approx.) from Wednesday, subject to stock availability.</li><li>• Additional 1-week for Western Australia.</li><li>• Express delivery is available subject to a surcharge. Contact Baresque for details and pricing.</li></ul> |
|-----------|---|

---

|                        |  |
|------------------------|--|
| Suggested Installation | <p>Reverse hang / overlap and double cut.</p> <p>Baresque recommends and supply Roman brand adhesives and primers.</p> |
|------------------------|--|

---

|                   |  |
|-------------------|--|
| Care Instructions | <p>Always use a clean, white, soft cloth.</p> <p>Use cloth with any of the following in preferred order of use:</p> <ol style="list-style-type: none"><li>1: Clear warm water</li><li>2: Mild solution of liquid detergent and warm water</li><li>3: Isopropyl Alcohol (a.k.a. rubbing alcohol)</li></ol> <p>Remove any detergent with a clean, damp cloth. Gently pat dry.</p> <p>For more difficult stains, dampen a soft white cloth with a solution of household bleach (10% bleach / 90% water). Rub gently.</p> <p>Rinse with a water dampened cloth to remove bleach concentration.</p> <p>DO NOT USE solvent based or concentrated abrasive cleaning agents, lacquer thinners, nail polish remover as these may cause discolouration over a period of time.</p> <p>Always test in an inconspicuous area first. If care instructions don't deliver the expected results, cease cleaning method immediately and contact Baresque for assistance.</p> |
|-------------------|--|

---

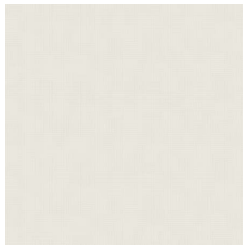
|          |  |
|----------|--|
| Warranty | 5-year warranty. Visit <a href="https://baresque.com.au/warranty">baresque.com.au/warranty</a> for complete details. |
|----------|--|

---

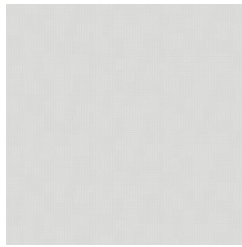
## Colour & Finish Options

### COLOURWAY CARD

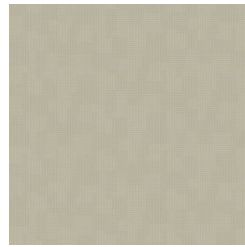
COLOURWAY CARD



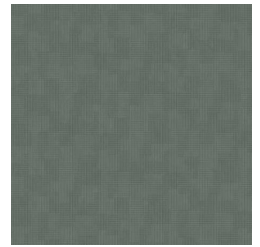
AVF24-003 CHALK  
DUST



AVF24-011 FLEUR DE  
SEL



AVF24-127 BEACH  
DAY



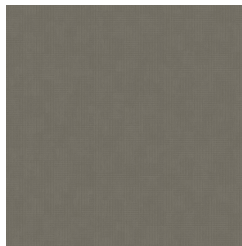
AVF24-239 OLIVE  
BRANCH



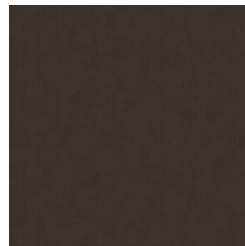
AVF24-341 DAYBREAK



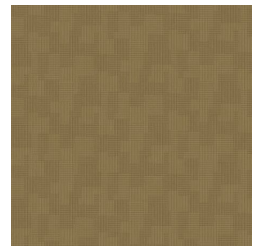
AVF24-488 ADMIRE



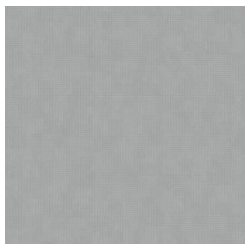
AVF24-642 TOSCANA



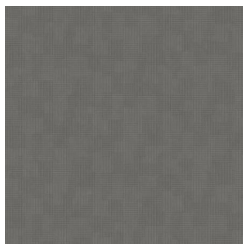
AVF24-665 JAVA



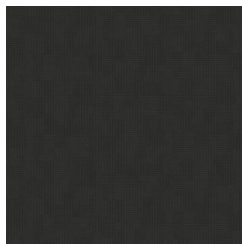
AVF24-794 HONEY  
YELLOW



AVF24-816 INDEX



AVF24-850  
DOWNTIME



AVF24-892 COMPASS