

WILLOW WEAVE

Wallcoverings » Commercial Wallcoverings



Brand: **Bolta**

Applications: **Walls**

WILLOW WEAVE

Wallcoverings » Commercial Wallcoverings

Willow Weave is a textured wallcovering that's available in 16 colourways and coordinates with Willow Weave.

- ✓ Bleach Cleanable
- ✓ 10% Recycled content
- ✓ HPD Certified
- ✓ Anti-Microbial
- ✓ Non-Phthalate
- ✓ Low VOC
- ✓ EPD Certified

Description	<p>Find solace amidst the captivating duo Willow and Willow Weave that unites nature and texture, leaving a lasting impression. Willow's whimsical pattern of shadowed leaves cascades across the walls, while Willow Weave's textured charm provides a harmonious backdrop.</p> <p>An artfully designed colour pallet evokes positivity and calmness in soothing environments allowing healthcare interiors to echo with vitality.</p> <p>For a touch of opulence, colourways Stormy and Midnight Glow enhance the pallet with shimmering metallic tones that make a statement in hospitality design.</p>
Composition	Vinyl face on a woven backing 20oz (452 g/m²).
Environmental Info	<p>Formaldehyde free</p> <p>Heavy metals free</p> <p>Perfluorooctanoic acid free</p> <p>No solvent inks</p> <p>Low VOC emissions. Any VOCs dissipate quickly (faster than paint) through normal ventilation and have no recognized adverse impact on indoor air quality.</p> <p>Durability means products do not need to be replaced regularly due to wear and tear and being cleanable, vinyl products are ideal for helping keep commercial environments clean of bacteria.</p> <p>Baresque will only deal with vinyl manufacturers that comply with applicable state and federal regulations, provide a factory that is safe and clean for its employees to work in, recycle scrap and inks during the manufacturing process to minimize waste related to production.</p>
Pattern Repeat Size	Not Applicable
Roll Size	132cm wide X 27.4m- Available by the lineal metre.
Weight	452 (g/m²)

WILLOW WEAVE

Wallcoverings » Commercial Wallcoverings

Fire Rating	<p>Tested in accordance with AS ISO 9705 2003 for the purpose of determining the Group Number classification as required by the Building Code of Australia for the control of fire spread on interior wall and ceiling linings.</p> <p>The result achieved was: Classification - Group 2 Specific Extinction - Less than 250m²/kg</p>
Lead Time	<ul style="list-style-type: none">• 2-weeks (approx.) from Wednesday, subject to stock availability.• Additional 1-week for Western Australia.• Express delivery is available subject to a surcharge. Contact Baresque for details and pricing.
Suggested Installation	<p>Reverse hang / overlap and double cut.</p> <p>Baresque recommends and supply Roman brand adhesives and primers.</p>
Care Instructions	<p>Use cloth with any of the following in preferred order of use:</p> <ol style="list-style-type: none">1: Clear warm water2: Mild solution of liquid detergent and warm water3: Isopropyl Alcohol (a.k.a. rubbing alcohol) <p>Remove any detergent with a clean, damp cloth. Gently pat dry.</p> <p>For more difficult stains, dampen a soft white cloth with a solution of household bleach (10% bleach / 90% water). Rub gently.</p> <p>Rinse with a water dampened cloth to remove bleach concentration.</p> <p>Do not use solvent based or concentrated abrasive cleaning agents, lacquer thinners or nail polish remover as these may cause discolouration over a period of time.</p> <p>Always test in an inconspicuous area first.</p> <p>If care instructions don't deliver the expected results, cease cleaning method immediately and contact Baresque for assistance.</p>
Warranty	<p>5-year warranty. Visit baresque.com.au/warranty for complete details.</p>

WILLOW WEAVE

Wallcoverings » Commercial Wallcoverings

Colour & Finish Options

COLOURWAY CARD

COLOURWAY CARD



WINTER BB-WW-01



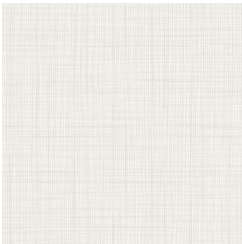
RAIN BB-WW-02



STORMY BB-WW-03



MIDNIGHT GLOW BB-WW-04



MISTY BB-WW-05



DOVE BB-WW-06



NEST BB-WW-07



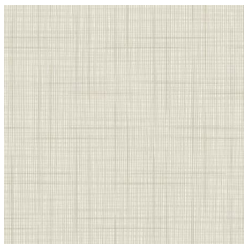
TAUPE BB-WW-08



CREAMY BB-WW-09



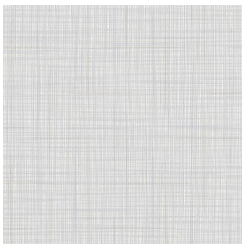
NEUTRAL BB-WW-10



BUFF BB-WW-11



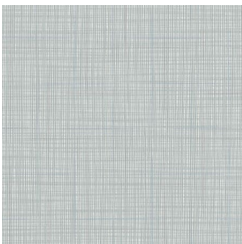
MUSHROOM BB-WW-12



DUSK BB-WW-13



FRESH BB-WW-14



BLUE JAY BB-WW-15



RAVINE BB-WW-16