

TEAHOUSE WEAVE

Wallcoverings » Commercial Wallcoverings



Brand: **Symphony**

Applications: **Walls**

1300 306 399

info@baresque.com.au

baresque.com.au

1 of 4

TEAHOUSE WEAVE

Wallcoverings » Commercial Wallcoverings

Teahouse Weave offers an antimicrobial protection, it's durable, low maintenance and easy to clean. EDP and HPD certified.

- ✓ **Bleach Cleanable**
- ✓ **10% Recycled content**
- ✓ **HPD Certified**

- ✓ **Anti-Microbial**
- ✓ **Non-Phthalate**

- ✓ **Low VOC**
- ✓ **EPD Certified**

Description

Teahouse Weave aims to revitalize interiors by integrating earth-focused colours and weaving textures that emulate natural elements promoting an environment with well-balanced energy and stability.

This series subtly blends the characteristics of a fine linen and a grass weave with soft and luxurious texture and rustic qualities reminiscent of natural fibres.

Offered in eighteen refreshing colour variations from cool to warm tones that evoke a sense of tranquillity, grounding, and connection with the outdoors, allowing the natural world to be experienced inside.

Composition

Vinyl face on a woven backing 20oz (452 g/m²)

Environmental Info

Formaldehyde free

Heavy metals free

Perfluorooctanoic acid free

No solvent inks

Low VOC emissions. Any VOCs dissipate quickly (faster than paint) through normal ventilation and have no recognized adverse impact on indoor air quality.

Durability means products do not need to be replaced regularly due to wear and tear and being cleanable, vinyl products are ideal for helping keep commercial environments clean of bacteria.

Baresque will only deal with vinyl manufacturers that comply with applicable state and federal regulations, provide a factory that is safe and clean for its employees to work in, recycle scrap and inks during the manufacturing process to minimize waste related to production.

Pattern Repeat Size

Not Applicable

Roll Size

137cm wide x 27.4m - Available by the lineal metre

Weight

452 (g/m²)

TEAHOUSE WEAVE

Wallcoverings » Commercial Wallcoverings

Fire Rating	<p>Tested in accordance with AS ISO 9705 2003 for the purpose of determining the Group Number classification as required by the Building Code of Australia for the control of fire spread on interior wall and ceiling linings.</p> <p>The result achieved was: Classification - Group 2 Specific Extinction - Less than 250m²/kg</p>
Lead Time	<ul style="list-style-type: none">• 2-weeks (approx.) from Wednesday, subject to stock availability.• Additional 1-week for Western Australia.• Express delivery is available subject to a surcharge. Contact Baresque for details and pricing.
Suggested Installation	<p>Reverse hang / overlap and double cut.</p> <p>Baresque recommends and supply Roman brand adhesives and primers.</p>
Care Instructions	<p>Always use a clean, white, soft cloth.</p> <p>Use cloth with any of the following in preferred order of use:</p> <ol style="list-style-type: none">1: Clear warm water2: Mild solution of liquid detergent and warm water3: Isopropyl Alcohol (a.k.a. rubbing alcohol) <p>Remove any detergent with a clean, damp cloth. Gently pat dry.</p> <p>For more difficult stains, dampen a soft white cloth with a solution of household bleach (10% bleach / 90% water). Rub gently.</p> <p>Rinse with a water dampened cloth to remove bleach concentration.</p> <p>DO NOT USE solvent based or concentrated abrasive cleaning agents, lacquer thinners, nail polish remover as these may cause discolouration over a period of time.</p> <p>Always test in an inconspicuous area first. If care instructions don't deliver the expected results, cease cleaning method immediately and contact Baresque for assistance.</p>
Warranty	<p>5-year warranty. Visit baresque.com.au/warranty for complete details.</p>

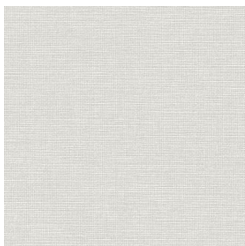
TEAHOUSE WEAVE

Wallcoverings » Commercial Wallcoverings

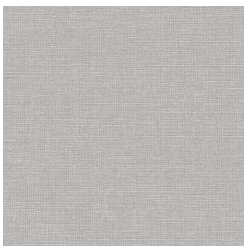
Colour & Finish Options

COLOURWAY CARD

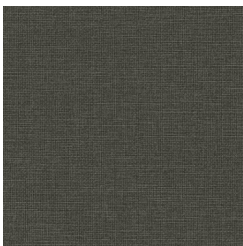
COLOURWAY CARD



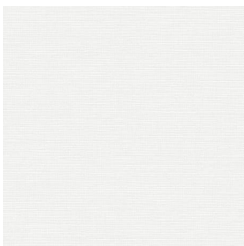
AZ53765 SHADOW



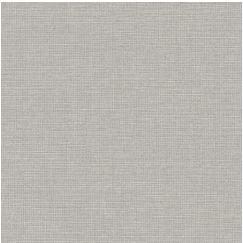
AZ53766 GRAPHITE



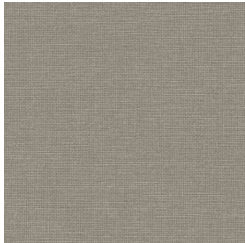
AZ53767 SABLE



AZ53768 PORCELAIN



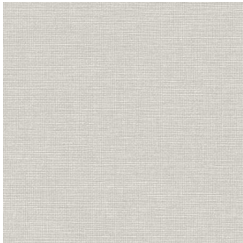
AZ53769 FOG



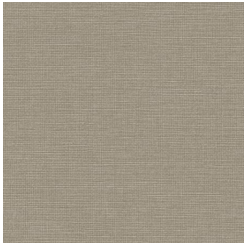
AZ53770 FOSSIL



AZ53771 ALABASTER



AZ53772 OYSTER



AZ53773 MINK



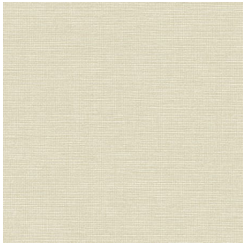
AZ53774 PARCHMENT



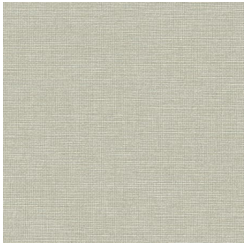
AZ53775 FLAX



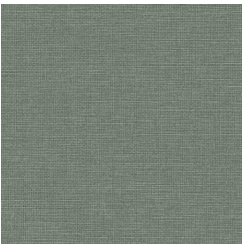
AZ53776 HUSK



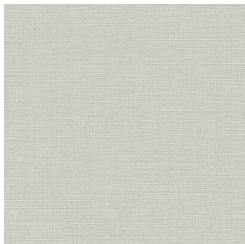
AZ53777
CHARTREUSE



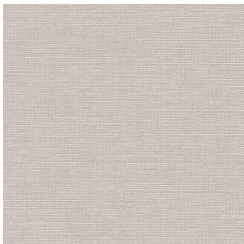
AZ53778
EUCALYPTUS



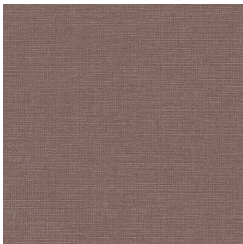
AZ53779 EMERALD



AZ53780
AQUAMARINE



AZ53781 LILAC



AZ53782 EGGPLANT