

# ANGELICA

Fabrics » Woven Fabrics



Brand: **Ennis Fabrics**

Applications: **Upholstery**

1300 306 399

[info@baresque.com.au](mailto:info@baresque.com.au)

[baresque.com.au](http://baresque.com.au)

1 of 4

# ANGELICA

Fabrics » Woven Fabrics

Textured solid woven, made with solution dyed polyester to achieve high UV resistance to be suitable for indoor/outdoor use.

- ✓ Bleach Cleanable
- ✓ Outdoor Suitable
- ✓ Water Resistant
- ✓ Anti - Stain
- ✓ Flame Retardant

Description	Secret Garden is a curated collection of traditional and modern styles designed to bring the magic and wonder of a secret garden to your home. The perfect indoor & outdoor fabric.
Composition	100% Dyed Polyester
Finishes	Endurepel Shield
Roll Size	137cm x 45.7m - Available by the lineal metre
Weight	294.9 g/m2
Abrasion	300,000 double rubs (Wyzenbeek)
Fire Rating	Tested in accordance with AS1530.3 Spread of Flame Index - 0 Smoke Developed Index - 5
Lead Time	<ul style="list-style-type: none"><li>• 2-weeks (approx.) from Wednesday, subject to stock availability.</li><li>• Additional 1-week for Western Australia.</li><li>• Express delivery is available subject to a surcharge. Contact Baresque for details and pricing.</li></ul>

# ANGELICA

Fabrics » Woven Fabrics

---

## Care Instructions

Always use a clean, white, soft cloth.

Clean in situ using a damp cloth and mild detergent. Sponge down afterwards with a clean, damp cloth.

Using a cloth to pat dry will help eliminate watermarks.

Ensure the pile is brushed back to its natural direction.

Upholstered furniture should be regularly vacuumed or brushed with a soft nylon brush to remove grit or dust, which may damage the pile.

Never use stiff bristles or wire brushes, as they may damage the fabric.

Always test in an inconspicuous area first. If care instructions don't deliver the expected results, cease cleaning method immediately and contact Baresque for assistance.

---

## Warranty

2-year warranty. Visit [baresque.com.au/warranty](https://baresque.com.au/warranty) for complete details.

---

## Additional Comments

Angelica is part of the Secret Garden Collection

---

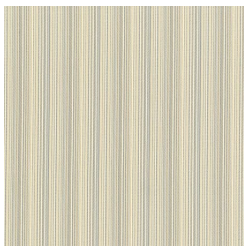
# ANGELICA

Fabrics » Woven Fabrics

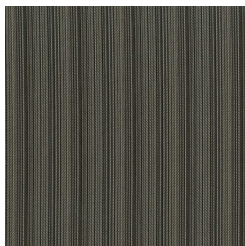
## Colour & Finish Options

### COLOURWAY CARD

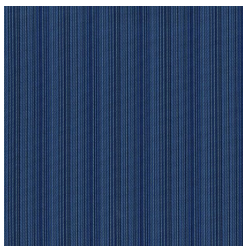
COLOURWAY CARD



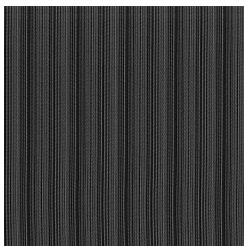
ANGEL 61 PEARL



ANGEL 81 OAK



ANGEL 305 LAKE



ANGEL 909  
MIDNIGHT