

PALAZZO BURCH

Fabrics » Woven Fabrics



Brand: **Burch**

Applications: **Upholstery**

1300 306 399

info@baresque.com.au

baresque.com.au

1 of 4

PALAZZO BURCH

Fabrics » Woven Fabrics

Palazzo’s graphic chevron is on display in minimal scale with maximum impact. Palazzo is available in fourteen high-contrast colorways.

- ✓ **High Performance**
- ✓ **Stain Resistant**
- ✓ **Soil Resistant**
- ✓ **Bleach Cleanable**

Description	<p>The chevron pattern of Palazzo has a timeless quality that makes it a popular choice in both contemporary and classic design. Its simplicity and elegance can add a touch of sophistication to any project, making it a favourite among interior designers.</p> <p>Palazzo is a high-performance fabric, soil and stain repellent and bleach cleanable.</p>
Composition	<p>68% Olefin</p> <p>32% Polyester</p>
Finishes	<p>Soil and Stain Repellent</p>
Pattern Repeat Size	<p>2.28 cm - H 1.27 cm - V</p>
Roll Size	<p>137cm wide X 55m - Available by the lineal metre</p>
Weight	<p>440.7 g/m2</p>
Abrasion	<p>66,000 double rubs - ASTM D4157</p>
Fire Rating	<p>This product can be treated with a fire retardant that will ensure it meets Australian Standard 1530.3. Contact Baresque for details.</p>
Lead Time	<ul style="list-style-type: none">• 2-weeks (approx.) from Wednesday, subject to stock availability.• Additional 1-week for Western Australia.• Express delivery is available subject to a surcharge. Contact Baresque for details and pricing.

PALAZZO BURCH

Fabrics » Woven Fabrics

Care Instructions

STEP 1: Regular Cleaning and Maintenance (Dirt - Dust - Grime)

Clean the soiled area with mild soap and water, then rinse with fresh water and wipe dry with a clean cloth.

STEP 2: Food Stains / Oils (Ketchup - Chocolate - Coffee / Tea - Salad Dressing - Butter - Soy Sauce)

Wipe the affected area with a soft cloth or soft bristle brush using a non-abrasive cleaner. Rinse with fresh water and wipe dry with a clean cloth.

STEP 3: Healthcare (Blood - Urine - Iodine - Betadine)

Clean / Disinfect the soiled area with a 10% solution of household bleach and 90% water.

It is important to rinse the cleaned area with fresh water after applying the bleach solution. Wipe dry with a clean cloth.

STEP 4: Difficult Stains (Eye Shadow / Mascara - Lipstick - Crayon - Grease - Mustard - Motor Oil)

Clean the soiled area with a 50% solution of Isopropyl Alcohol (Rubbing Alcohol) and water.

It is important to rinse the cleaned area with fresh water after applying the alcohol solution. Wipe dry with a clean cloth.

Warranty

2-year warranty. Visit baresque.com.au/warranty for complete details.

PALAZZO BURCH

Fabrics » Woven Fabrics

Colour & Finish Options



COLOURWAY CARD



1011859 Sunshine



1011860 Forest



1011861 Pesto



1011862 Grotto



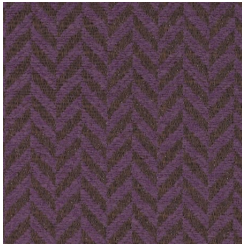
1011863 Coast



1011864 Galactic



1011865 Sapphire



1011866 Mulberry



1011867 Cardinal



1011868 Marble



1011869 Coin



1011870 Taupe



1011871 Biscotti



1011872 Ginger