

NEPTUNE

Fabrics » Woven Fabrics



Brand: **Crypton**

Applications: **Upholstery**

1300 306 399

info@baresque.com.au

baresque.com.au

1 of 4

NEPTUNE

Fabrics » Woven Fabrics

Neptune is a crypton textured performance fabric that's available in 16 colourways.

✓ Bleach Cleanable

✓ Crypton

✓ Seaqual Yarn

Description Neptune is a nubby boucle texture that embodies the easy-breezy vibe of a coastal town. Sixteen airy shades like whitewashed ivories, preppy blues, and driftwood tans complete the look.

Composition 74% Polyester
20% Seaqual
6% Post Consumer Recycled Polyester

Environmental Info Greenguard Certifications contributes towards LEED credits for low-emitting furniture and ensures compliance with Business and Institutional Furniture Manufacturers Association (BIFMA) X7.1 standard and BIFMA e3 credit 7.6.1.

Greenguard Gold Certification standard includes:

- * Health-based criteria for additional chemicals and requires lower total VOC emissions levels to help ensure that products are acceptable for use in environments like schools and healthcare facilities.
- * Products that also comply with requirements of the state of California's Department of Public Health (CDPH) "Standard Method for the Test and Evaluation of Volatile Organic Chemical Emissions from Indoor Sources Using Environmental Chambers, Version 1.2 (2017)" (also known as California Section 01350).
- * Products that are compliant with the BIFMA X7.1 standard and BIFMA e3 credits 7.6.1, 7.6.2, and 7.6.3.

Finishes Crypton

Roll Size 137cm wide X 55m - Available by the lineal metre

Weight 678.1 g/m²

Abrasion 185,000 double rubs (Wyzenbeek)

Fire Rating This product can be treated with a fire retardant that will ensure it meets Australian Standard 1530.3. Contact Baresque for details.

NEPTUNE

Fabrics » Woven Fabrics

Lead Time

- 2-weeks (approx.) from Wednesday, subject to stock availability.
- Additional 1-week for Western Australia.
- Express delivery is available subject to a surcharge. Contact Baresque for details and pricing.

Care Instructions

Always use a clean, white, soft cloth.

Prepare a mixture of 1/3 Napisan and 2/3 Fab. Combine the mixture with water to make a paste about the consistency of soft margarine i.e. not too runny. Apply using a soft bristle brush. Leave for 10 minutes.

Use a brush and clean, warm water to remove the paste being sure to renew the water so that it remains clean.

Never use stiff bristles or wire brushes, as they may damage the fabric. To prevent soil build-up, frequent vacuuming is recommended.

Using a cloth to pat dry will help eliminate watermarks.

For more difficult stains, dampen a soft white cloth with a solution of household bleach (10% bleach / 90% water). Rub gently. Rinse with a water dampened cloth to remove bleach concentration.

Always test in an inconspicuous area first. If care instructions don't deliver the expected results, cease cleaning method immediately and contact Baresque for assistance.

Warranty

2-year warranty. Visit baresque.com.au/warranty for complete details.

Additional Comments

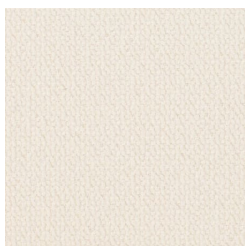
SEAQUAL® YARN was created through a partnership with the SEAQUAL INITIATIVE, by using Upcycled Marine Plastic and 100% recycled polyester from land sources.

This unique SEAQUAL® YARN is woven into Burch patterns Calypso, Neptune, and Triton.

Colour & Finish Options



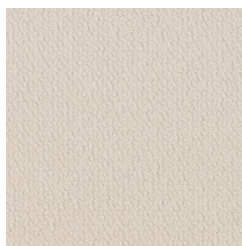
COLOURWAY CARD



1011568 Pearl



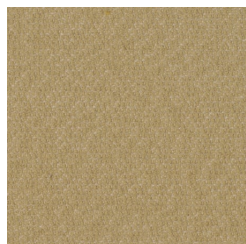
1011569 Orca



1011570 Shell



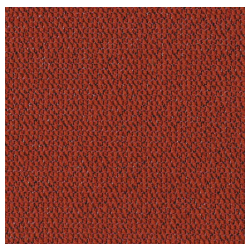
1011571 Oyster



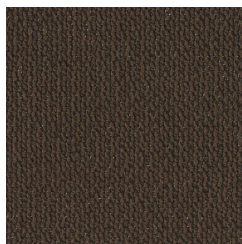
1011572 Beach



1011573 Sunray



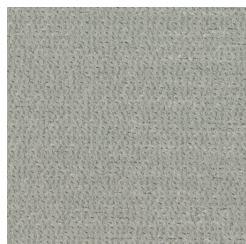
1011574 Portside



1011575 Otter



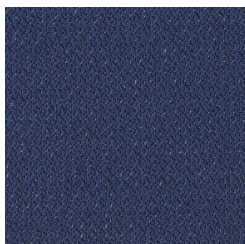
1011576 Shark



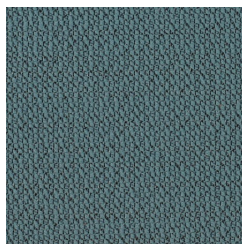
1011577 Vessel



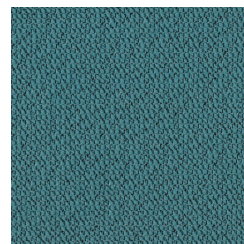
1011578 Glacier



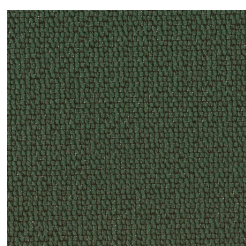
1011579 Atlantic



1011580 Mediterranean



1011581 Tropic



1011582 Turtle



1011583 Surf