

LAGO

Fabrics » Woven Fabrics



Brand: **Burch**

Applications: **Upholstery**

1300 306 399

info@baresque.com.au

baresque.com.au

1 of 5

LAGO

Fabrics » Woven Fabrics



LAGO

Fabrics » Woven Fabrics

Lago's supremely soft texture displays layered, dimensional colour. Playful Pistachio and hip Hibiscus are part of Lago's fifteen vibrant hues.

✓ **High Performance**

✓ **Soil Resistant**

✓ **Stain Resistant**

✓ **Bleach Cleanable**

Description Lago is not only visually and tactilely appealing, but it also offers a sense of comfort and warmth. It's a versatile upholstery that could adorn anything from plush armchairs in a cozy reading nook to stately sofas in a grand living room. Its texture not only serves as a visual feast but also engages the senses, making it an ideal choice for those seeking both aesthetic beauty and tactile delight in their living spaces.

Composition 72% Olefin
28% Polyester

Roll Size 137cm wide X 55m - Available by the lineal metre

Weight 508.5 g/m²

Abrasion 63,000 double rubs (ASTM)

Fire Rating Tested in accordance with AS1530.3
Spread of Flame Index - 0
Smoke Developed Index - 5

Lead Time

- 2-weeks (approx.) from Wednesday, subject to stock availability.
- Additional 1-week for Western Australia.
- Express delivery is available subject to a surcharge. Contact Baresque for details and pricing.

Care Instructions

STEP 1: Regular Cleaning and Maintenance (Dirt - Dust - Grime)

Clean the soiled area with mild soap and water, then rinse with fresh water and wipe dry with a clean cloth.

STEP 2: Food Stains / Oils (Ketchup - Chocolate - Coffee / Tea - Salad Dressing - Butter - Soy Sauce)

Wipe the affected area with a soft cloth or soft bristle brush using a non-abrasive cleaner. Rinse with fresh water and wipe dry with a clean cloth.

STEP 3: Healthcare (Blood - Urine - Iodine - Betadine)

Clean / Disinfect the soiled area with a 10% solution of household bleach and 90% water.

It is important to rinse the cleaned area with fresh water after applying the bleach solution. Wipe dry with a clean cloth.

STEP 4: Difficult Stains (Eye Shadow / Mascara - Lipstick - Crayon - Grease - Mustard - Motor Oil)

Clean the soiled area with a 50% solution of Isopropyl Alcohol (Rubbing Alcohol) and water.

It is important to rinse the cleaned area with fresh water after applying the alcohol solution. Wipe dry with a clean cloth.

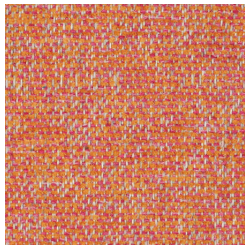
Warranty

2-year warranty. Visit [baresque.com.au/warranty](https://www.baresque.com.au/warranty) for complete details.

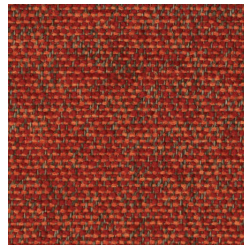
Colour & Finish Options



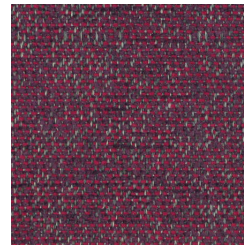
COLOURWAY CARD



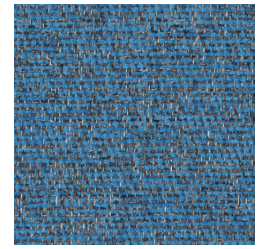
1011844 Hibiscus



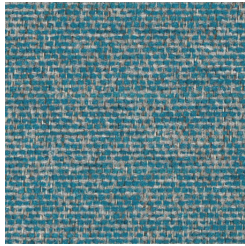
1011845 Molten



1011846 Diva



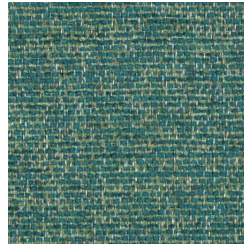
1011847 Cerulean



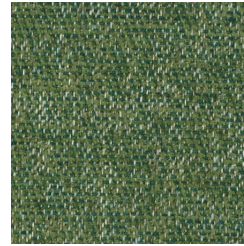
1011848 Riviera



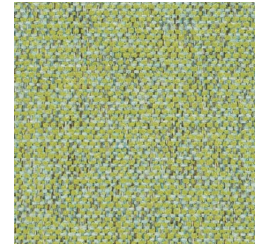
1011849 Seabreeze



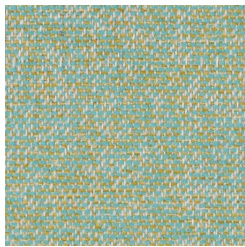
1011850 Jade



1011851 Oregano



1011852 Pistachio



1011853 Calypso



1011854 Ciabatta



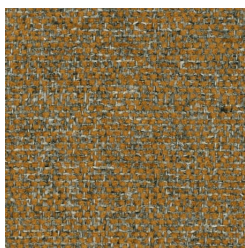
1011855 Mirror



1011856 Cobblestone



1011857 Raven



1011858 Sepia