

HOUNDSTOOTH

Fabrics » Woven Fabrics



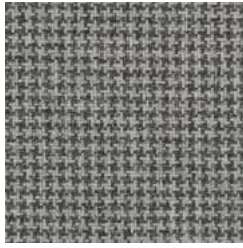
Brand: **Crypton**

HOUNDSTOOTH

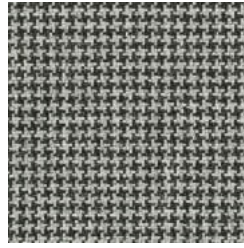
Fabrics » Woven Fabrics



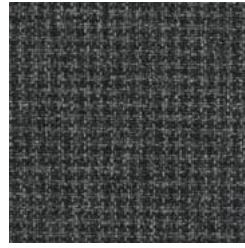
1011226 Frost



1011227 Boulder



1011228 Phantom



1011229 Abyss



1011230 Truffle



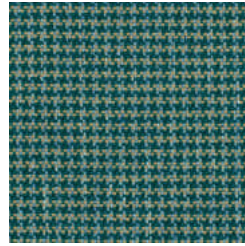
1011231 Argyle



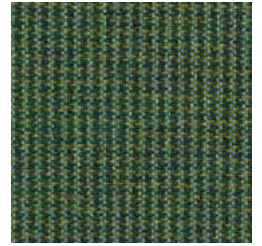
1011232 Marina



1011233 Vortex



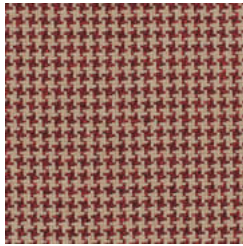
1011234 Oasis



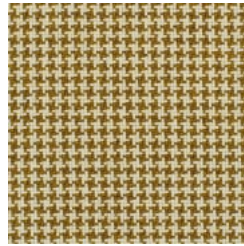
1011235 Peacock



1011236 Forest



1011237 Garnet



1011238 Butterscotch



1011239 Oat

HOUNDSTOOTH

Fabrics » Woven Fabrics

A striking and handsome check true to its namesake. Houndstooth is available in fourteen tailored hues with a strong menswear influence.

✓ **Moisture Barrier**

✓ **Bleach Cleanable**

Description Houndstooth is a Supreen Permanent Moisture Barrier fabric with a classic pattern that's available in 14 colourways.

Roll Size 137cm wide x 45.7m - Available by the full roll only

Weight 576.3 g/m²

Composition 91% Polyester
7% Polyurethane
2% Silicone

Abrasion 100,000 double rubs (ASTM D4157)

Finishes Supreen

Fire Rating This product can be treated with a fire retardant that will ensure it meets Australian Standard 1530.3. Contact Baresque for details.

Warranty 2-year warranty. Visit baresque.com.au/warranty for complete details.

Lead Time

- 2-weeks (approx.) from Wednesday, subject to stock availability.
- Additional 1-week for Western Australia.
- Express delivery is available subject to a surcharge. Contact Baresque for details and pricing.

HOUNDSTOOTH

Fabrics » Woven Fabrics

Care Instructions

Supreen™ is a revolutionary new performance upholstery material, that marries cutting-edge woven and coated technology to create a unique liquid-barrier textile

Regular Cleaning and Maintenance (Dirt • Dust • Grime)

Regular vacuuming is recommended.

Spot clean the soiled area with mild soap and water, then wipe or rinse with fresh water.

Food Stains / Oils (Mustard • Ketchup • Chocolate • Coffee / Tea • Salad Dressing)

Rub the affected area with a soft cloth or sponge using a 1:10 solution of dish soap and water.

For stubborn stains follow up with a mild solution of Oxi Clean™. Wipe or rinse with fresh water

Difficult Stains (Eye Shadow • Mascara • Lipstick • Crayon • Grease)

Rub the affected area with a soft cloth or sponge using a 1:10 solution of dish soap and water.

For stubborn stains follow up with a mild solution of Oxi Clean™. Wipe or rinse with fresh water.

Healthcare (Blood • Urine • Betadine)

Rub the affected area with a soft cloth or sponge using a 1:10 solution of dish soap and water.

For stubborn stains follow up with a mild solution of Oxi Clean™. Wipe or rinse with fresh water.

HOUNDSTOOTH

Fabrics » Woven Fabrics

Colour & Finish Options