

# CALYPSO

Fabrics » Woven Fabrics

---



Brand: **Burch**

Applications: **Upholstery**

1300 306 399

[info@baresque.com.au](mailto:info@baresque.com.au)

[baresque.com.au](http://baresque.com.au)

1 of 4

# CALYPSO

Fabrics » Woven Fabrics

Calypso is crypton fabric with a textured pattern that's available in 14 colourways.

✓ **Bleach Cleanable**

✓ **Seaqual Yarn**

**Description** Calypso dances to the beat of its own drum. Playful multicolored yarns are accentuated by a subtle glimmer, like reflections on the water. Sun-soaked oranges, tidepool blues, and aloe greens are some of the fourteen vibrant hues.

**Composition** 56% Polyester  
26% Seaqual  
17% Post Consumer Recycled Polyester  
1% Nylon

**Environmental Info** Greenguard Certifications contributes towards LEED credits for low-emitting furniture and ensures compliance with Business and Institutional Furniture Manufacturers Association (BIFMA) X7.1 standard and BIFMA e3 credit 7.6.1.

Greenguard Gold Certification standard includes:

- \* Health-based criteria for additional chemicals and requires lower total VOC emissions levels to help ensure that products are acceptable for use in environments like schools and healthcare facilities.
- \* Products that also comply with requirements of the state of California's Department of Public Health (CDPH) "Standard Method for the Test and Evaluation of Volatile Organic Chemical Emissions from Indoor Sources Using Environmental Chambers, Version 1.2 (2017)" (also known as California Section 01350).
- \* Products that are compliant with the BIFMA X7.1 standard and BIFMA e3 credits 7.6.1, 7.6.2, and 7.6.3.

**Finishes** Crypton

**Roll Size** 137cm wide X 55m - Available by the lineal metre

**Weight** 779.8 g/m<sup>2</sup>

**Abrasion** 63,000 double rubs (ASTM)

# CALYPSO

Fabrics » Woven Fabrics

Fire Rating	Tested in accordance with AS1530.3 Spread of Flame Index - 0 Smoke Developed Index - 5
Lead Time	<ul style="list-style-type: none"><li>• 2-weeks (approx.) from Wednesday, subject to stock availability.</li><li>• Additional 1-week for Western Australia.</li><li>• Express delivery is available subject to a surcharge. Contact Baresque for details and pricing.</li></ul>
Care Instructions	<p>Mix 5 parts water with 1 part of an enzyme laundry detergent to have a mixture that works well on all stains.</p> <p>Most liquid spills simply blot off the surface with a dry towel. If a stains remains, follow these simple steps:</p> <ol style="list-style-type: none"><li>1. Remove excess soil, and apply the soap mixture on the stained area</li><li>2. Allow solution to remain on stain for 1 minute</li><li>3. Blot up the stain with a dry, clean towel, rinse any remaining soap and blot the area again</li></ol> <p>Repeat these steps if a spot still remains. If agitation is necessary, spray the stained area and work the stain using a soft brush or edge of spoon from outside of spot toward the middle. Blot and rinse to remove any soap.</p>
Warranty	2-year warranty. Visit <a href="https://baresque.com.au/warranty">baresque.com.au/warranty</a> for complete details.
Additional Comments	<p>SEAQUAL® YARN was created through a partnership with the SEAQUAL INITIATIVE, by using Upcycled Marine Plastic and 100% recycled polyester from land sources.</p> <p>This unique SEAQUAL® YARN is woven into Burch patterns Calypso, Neptune, and Triton.</p>

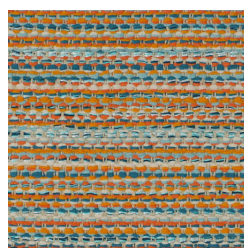
## Colour & Finish Options



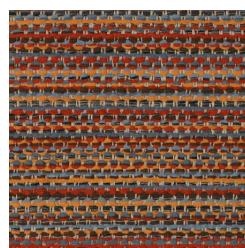
COLOURWAY CARD



1011592 Kelp



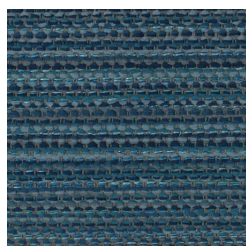
1011584 Seabreeze



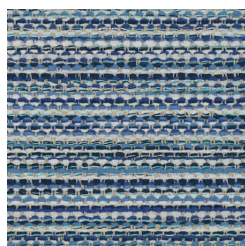
1011585 Sunset



1011586 Coral Reef



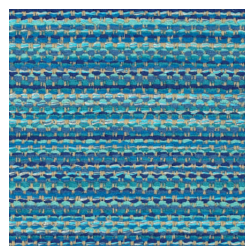
1011587 Pacific



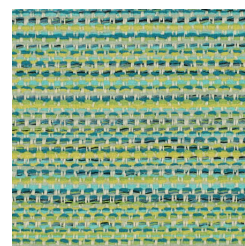
1011588 Baltic



1011589 Lagoon



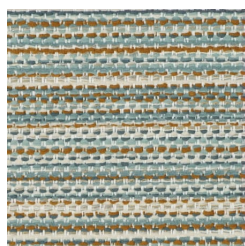
1011590 Cayman



1011591 Mermaid



1011593 Island



1011594 Tahiti



1011595 Sandpiper



1011596 Whitecap



1011597 Storm Cloud