

MADAGASCAN STRAW

Wallcoverings » Advanced Wall Protection



Brand: **P3tec**

Applications: **Walls**

MADAGASCAN STRAW

Wallcoverings » Advanced Wall Protection

Madagascar Straw weaves palm stalks into the perfect blend of natural texture and intense performance.

✓ **Bleach Cleanable**

✓ **Easy Clean**

✓ **Extended Warranty**

✓ **Extreme Durability**

✓ **High Stain Resistance**

✓ **Ultra Performance**

Description

Some walls need extra protection from bumps, rubs, spills, and commercial cleaners, but that shouldn't mean they aren't also easy on the eye.

P3TEC offers just that – the designs, textures, and flexibility of vinyl wallcovering with the impact, chemical and abrasion resistance of wall protection.

1. Impact, chemical and abrasion resistant.

Independently tested by ASTM International (D5420-10, D308, D4060-14).

2. Stain resistant and easy to clean.

Stain resistant to permanent markers, spray paint, wine, coffee.

Cleanable with bleach, hydrogen peroxide and ammonia.

3. Simple wallcovering installation.

Comes in rolls for easy transportation and top to bottom installation.

Pattern matching, seaming with overlap, double cut process.

Easy on the spot cut-outs.

4. Wide range of applications.

Bends around curves.

Covers full walls without need for protective profiles.

Composition

Extra thick vinyl face on a heavy polyester / cotton knit fabric backing

MADAGASCAN STRAW

Wallcoverings » Advanced Wall Protection

Environmental Info

Formaldehyde free

Heavy metals free

Perfluorooctanoic acid free

No solvent inks

Low VOC emissions. Any VOCs dissipate quickly (faster than paint) through normal ventilation and have no recognized adverse impact on indoor air quality.

Durability means products do not need to be replaced regularly due to wear and tear and being cleanable, vinyl products are ideal for helping keep commercial environments clean of bacteria.

Baresque will only deal with vinyl manufacturers that comply with applicable state and federal regulations, provide a factory that is safe and clean for its employees to work in, recycle scrap and inks during the manufacturing process to minimize waste related to production.

Roll Size

137cm. Trims to 122cm x 13.7m Available by the FULL ROLL ONLY

Fire Rating

Tested in accordance with AS ISO 9705 2003 for the purpose of determining the Group Number classification as required by the Building Code of Australia for the control of fire spread on interior wall and ceiling linings.

The result achieved was:

Classification - Group 2

Specific Extinction - Less than 250m²/kg

Lead Time

- 2-weeks (approx.) from Wednesday, subject to stock availability.
 - Additional 1-week for Western Australia.
 - Express delivery is available subject to a surcharge. Contact Baresque for details and pricing.
-

Suggested Installation

Reverse hang alternate drops/overlap and double cut.

Advanced Wall Protection requires a specific installation method and we strongly recommend you use one of our recommended installers.

Download the Installation Instructions for details.

Baresque recommends and supply Roman brand adhesives and primers.

MADAGASCAN STRAW

Wallcoverings » Advanced Wall Protection

Care Instructions

1. Completion:

Immediately upon completion of installation, installer shall make sure that these products are cleaned and free of any layout marks, excess adhesive or surface blemishes. Remove excess adhesive with methods and materials recommended by the adhesive manufacturer.

2. Clean-Up and Routine Maintenance:

Rigid Profiles: For general cleaning, use disinfectant cleaner.

All Purpose Cleaner Heavy Duty: Use a clean, lint-free cloth and wipe clean. Do not use any abrasive cleaning cloths or sponges.

1. Spray products onto profile and wipe with a dampened cloth.

2. Repeat process if stain remains. If cleaning product residue remains, rinse with water.

Warranty

5-year warranty. Visit baresque.com.au/warranty for complete details.

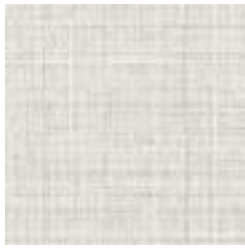
MADAGASCAN STRAW

Wallcoverings » Advanced Wall Protection

Colour & Finish Options



P3T-60365 BARLEY



P3T-60366 COCONUT



P3T-60367 WHITE
WILLOW



P3T-60368 LINEN



P3T-60369 OATS



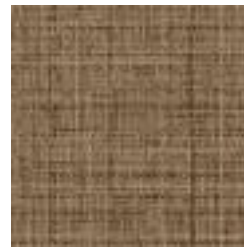
P3T-60370
HONEYSUCKLE



P3T-60371 NATURAL



P3T-60372 JUTE



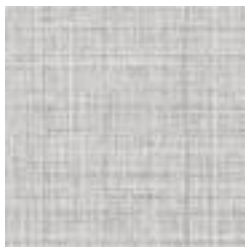
P3T-60373 CATTAIL



P3T-60374 SAND
DUNE



P3T-60375 WOVEN
WHEAT



P3T-60376 OYSTER



P3T-60377 SPARROW



P3T-60378 GRAPHITE



P3T-60379 OLIVE



P3T-60380 MARSH