

LUZON VANTAGE III

Wallcoverings » Advanced Wall Protection



Brand: **Versa**

Applications: **Walls**

1300 306 399

info@baresque.com.au

baresque.com.au

1 of 5

LUZON VANTAGE III

Wallcoverings » Advanced Wall Protection



LUZON VANTAGE III

Wallcoverings » Advanced Wall Protection

Luzon has a sculptural vertical emboss providing a neutral woven effect with a warm and inviting colour palette. Available in 17 colourways.

✓ **High Performance**

✓ **Bleach Cleanable**

✓ **Chemical Resistance**

Description

Versa's Vantage III is superior wall protection with evo PVC-free technology. This 33 oz material provides specifiers choice in material without compromising the beauty, quality, and durability of the product.

Vantage III is constructed of olefin composite, contains 30% recycled content, and exceeds Type III performance standards. Engineered for heavy traffic spaces, it is scratch, puncture, tear, and stain resistant.

Composition

Extra thick vinyl face on a drill fabric backing Equivalent to 33oz (746 g/m²)

Environmental Info

Formaldehyde free

Heavy metals free

Perfluorooctanoic acid free

No solvent inks

Low VOC emissions. Any VOCs dissipate quickly (faster than paint) through normal ventilation and have no recognized adverse impact on indoor air quality.

Durability means products do not need to be replaced regularly due to wear and tear and being cleanable, vinyl products are ideal for helping keep commercial environments clean of bacteria.

Baresque will only deal with vinyl manufacturers that comply with applicable state and federal regulations, provide a factory that is safe and clean for its employees to work in, recycle scrap and inks during the manufacturing process to minimize waste related to production.

Roll Size

132/137cm x 27.4m - Available by the lineal metre.

Weight

745 gr/m²

Fire Rating

Tested in accordance with AS ISO 9705 2003 for the purpose of determining the Group Number classification as required by the Building Code of Australia for the control of fire spread on interior wall and ceiling linings.

The result achieved was:

Classification - Group 2

Specific Extinction - Less than 250m²/kg

LUZON VANTAGE III

Wallcoverings » Advanced Wall Protection

Lead Time	<ul style="list-style-type: none">• 2-weeks (approx.) from Wednesday, subject to stock availability.• Additional 1-week for Western Australia.• Express delivery is available subject to a surcharge. Contact Baresque for details and pricing.
Suggested Installation	<p>Reverse hang alternate drops/overlap and double cut.</p> <p>Advanced Wall Protection requires a specific installation method and we strongly recommend you use one of our recommended installers.</p> <p>Download the Installation Instructions for details.</p> <p>Baresque recommends and supply Roman brand adhesives and primers.</p>
Care Instructions	<p>1. Completion:</p> <p>Immediately upon completion of installation, installer shall make sure that these products are cleaned and free of any layout marks, excess adhesive or surface blemishes. Remove excess adhesive with methods and materials recommended by the adhesive manufacturer.</p> <p>2. Clean-Up and Routine Maintenance:</p> <p>Rigid Profiles: For general cleaning, use disinfectant cleaner.</p> <p>All Purpose Cleaner Heavy Duty: Use a clean, lint-free cloth and wipe clean. Do not use any abrasive cleaning cloths or sponges.</p> <p>1. Spray products onto profile and wipe with a dampened cloth.</p> <p>2. Repeat process if stain remains. If cleaning product residue remains, rinse with water.</p>
Warranty	5-year warranty. Visit baresque.com.au/warranty for complete details.

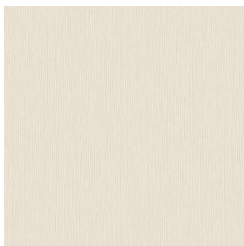
LUZON VANTAGE III

Wallcoverings » Advanced Wall Protection

Colour & Finish Options

COLOURWAY CARD

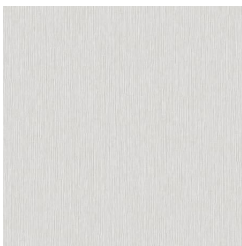
COLOURWAY CARD



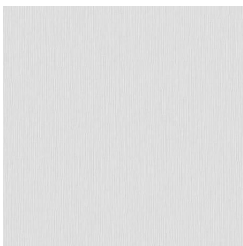
AFP02-015 White Gold



AFP02-021 Mortar



AFP02-041 Kaolin



AFP02-053 Whisp



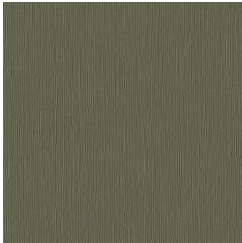
AFP02-129 Gobi



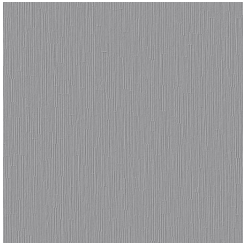
AFP02-184 Antique



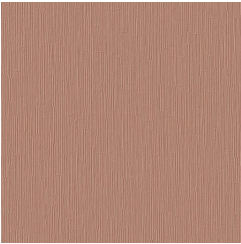
AFP02-185 Shoreline



AFP02-227 Spruce



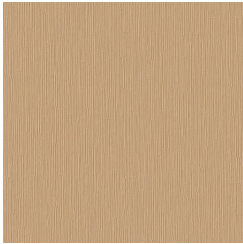
AFP02-316 Cascade



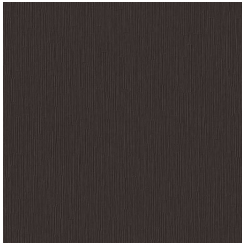
AFP02-411 Sandalwood



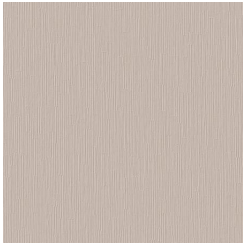
AFP02-698 Monarch



AFP02-757 Radiant



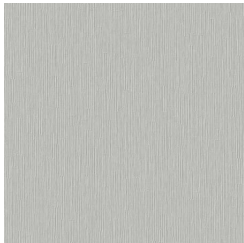
AFP02-810 Eclipse



AFP02-836 Whetstone



AFP02-868 Mako



AFP02-871 Capstone



AFP02-891 Flint