

EMERSON TEXTURE

Wallcoverings » Commercial Wallcoverings



Brand: **Versa**

EMERSON TEXTURE

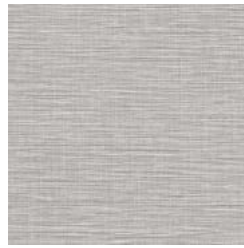
Wallcoverings » Commercial Wallcoverings

COLOURWAY CARD

COLOURWAY CARD



A205-012 BIRCH



A205-038 HEATHER



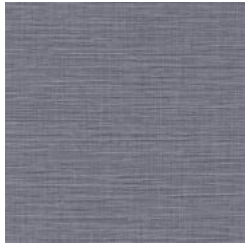
A205-104 VELLUM



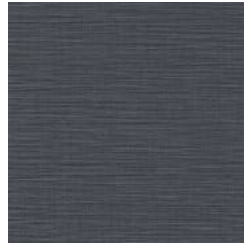
A205-127 BUFF



A205-184 CAMBRIDGE



A205-345 WALDEN
POND



A205-372 SEAPORT



A205-592 CURRANT



A205-641 NORFOLK



A205-803 STERLING



A205-819 BRIGHTON



A205-826 ESSEX



A205-833 HARBOR



A205-834 OXFORD



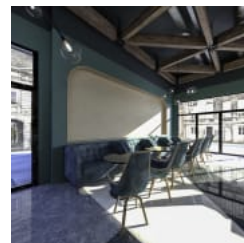
A205-852 CHELSEA
GRAY



A205-867 REVERE



A205-882 AMHERST



EMERSON TEXTURE

Wallcoverings » Commercial Wallcoverings

Emerson Texture is a commercial wallcovering with a textile look that's available in 17 colourways.

✓ **Bleach Cleanable**

✓ **Phthalate Free**

Description

Emerson Texture offers a structured textile look accentuated by a dimensional, bidirectional emboss. This design is offered in 17 colourways ranging from classic neutrals to nuanced accents.

Roll Size

132/137cm x 27.4m - Available by the lineal metre.

Weight

452 gr/m²

Composition

Vinyl face on a woven backing 20oz (452 g/m²)

Environmental Info

Formaldehyde free

Heavy metals free

Perfluorooctanoic acid free

No solvent inks

Low VOC emissions. Any VOCs dissipate quickly (faster than paint) through normal ventilation and have no recognized adverse impact on indoor air quality.

Durability means products do not need to be replaced regularly due to wear and tear and being cleanable, vinyl products are ideal for helping keep commercial environments clean of bacteria.

Baresque will only deal with vinyl manufacturers that comply with applicable state and federal regulations, provide a factory that is safe and clean for its employees to work in, recycle scrap and inks during the manufacturing process to minimize waste related to production.

Fire Rating

Tested in accordance with AS ISO 9705 2003 for the purpose of determining the Group Number classification as required by the Building Code of Australia for the control of fire spread on interior wall and ceiling linings.

The result achieved was:

Classification - Group 2

Specific Extinction - Less than 250m²/kg

Warranty

5-year warranty. Visit [baresque.com.au/warranty](https://www.baresque.com.au/warranty) for complete details.

EMERSON TEXTURE

Wallcoverings » Commercial Wallcoverings

Lead Time	<ul style="list-style-type: none">• 2-weeks (approx.) from Wednesday, subject to stock availability.• Additional 1-week for Western Australia.• Express delivery is available subject to a surcharge. Contact Baresque for details and pricing.
------------------	---

Suggested Installation	<p>Reverse hang / overlap and double cut.</p> <p>Baresque recommends and supply Roman brand adhesives and primers.</p>
-------------------------------	--

Care Instructions	<p>Always use a clean, white, soft cloth.</p> <p>Use cloth with any of the following in preferred order of us:</p> <ol style="list-style-type: none">1: Clear warm water2: Mild solution of liquid detergent and warm water3: Isopropyl Alcohol (a.k.a. rubbing alcohol) <p>Remove any detergent with a clean, damp cloth. Gently pat dry.</p> <p>For more difficult stains, dampen a soft white cloth with a solution of household bleach (10% bleach / 90% water). Rub gently.</p> <p>Rinse with a water dampened cloth to remove bleach concentration.</p> <p>DO NOT USE solvent based or concentrated abrasive cleaning agents, lacquer thinners, nail polish remover as these may cause discolouration over a period of time.</p> <p>Always test in an inconspicuous area first. If care instructions don't deliver the expected results, cease cleaning method immediately and contact Baresque for assistance.</p>
--------------------------	---

Additional Comments	Coordinates with Emerson
----------------------------	--------------------------

EMERSON TEXTURE

Wallcoverings » Commercial Wallcoverings

Colour & Finish Options