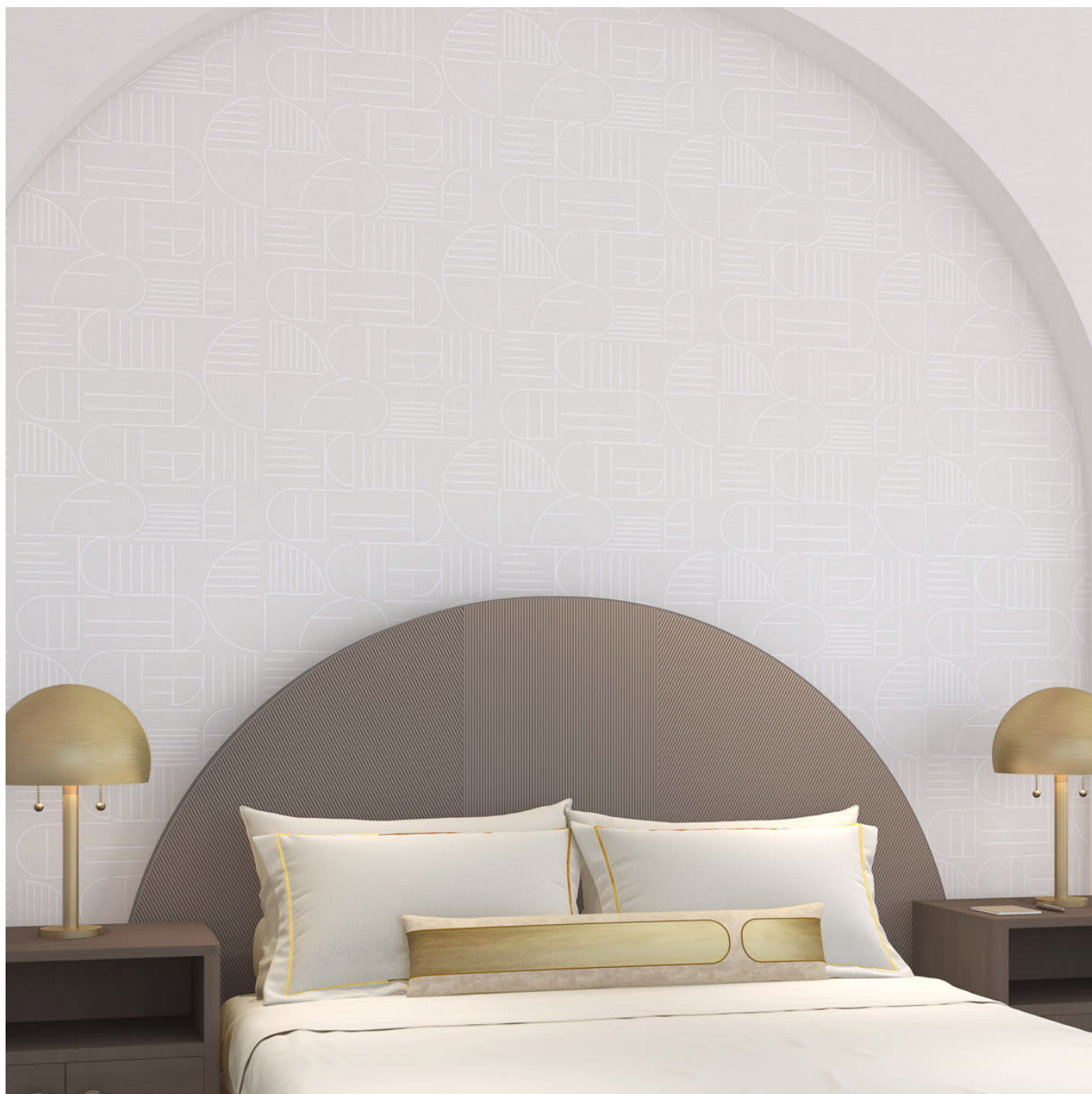


MOONDANCE LINE UP

Wallcoverings » Commercial Wallcoverings



Brand: **Symphony**

Applications: **Walls**

1300 306 399

info@baresque.com.au

baresque.com.au

1 of 4

MOONDANCE LINE UP

Wallcoverings » Commercial Wallcoverings

Moondance Line-Up is a Type II wallcovering with a geometric pattern. Available in 9 colourways, it's Low Voc, bleach cleanable and anti-microbial.

- ✓ Low VOC
- ✓ Bleach Cleanable
- ✓ Coordinate available
- ✓ Anti-Microbial

Description	<p>Let Moondance Line-up and Line-up propel you back to the age of glamour with these Art Deco-inspired patterns.</p> <p>Bold shapes and clean geometric lines are the foundation of these patterns.</p> <p>The emphasis on rounded arched contours feeds today's desire for this of-the-moment profile.</p> <p>The opulent jewel effects in Line-up reinforces the theme. Moondance Line-up's sleek colour pairings highlight the later spirit of the Art-Deco movement and coordinate with Moondance perfectly.</p>
Composition	<p>Type II Wallcovering</p> <p>Non- Woven Backing</p>
Sustainability	<p>- Low VOC</p> <p>- 10% Recycled content</p> <p>-Non-Phthalate</p> <p>- EPD / HPD</p> <p>It is the policy of J. Josephson, Inc. to ensure that the activities, products, and services carried out here will be appropriate toward meet-and-exceed compliance with relevant environmental legislation and regulations and other requirements to which it subscribes.</p> <p>We recognize the interrelationship of productive efficiency with environmental impact. Therefore, while our commitment to the customer is still a top priority, we will also work toward continuous improvement and pollution prevention. To achieve this, we will also set and review environmental objectives and targets within the framework of a documented, implemented and effectively communicated program.</p>
Pattern Repeat Size	60.96cm H x 66.04cm W
Roll Size	132cm wide X 27.4m- Available by the lineal metre.

MOONDANCE LINE UP

Wallcoverings » Commercial Wallcoverings

Fire Rating	<p>Tested in accordance with AS ISO 9705 2003 for the purpose of determining the Group Number classification as required by the Building Code of Australia for the control of fire spread on interior wall and ceiling linings.</p> <p>The result achieved was: Classification - Group 2 Specific Extinction - Less than 250m²/kg</p>
Lead Time	<ul style="list-style-type: none">• 2-weeks (approx.) from Wednesday, subject to stock availability.• Additional 1-week for Western Australia.• Express delivery is available subject to a surcharge. Contact Baresque for details and pricing.
Suggested Installation	<p>Non-reverse hang alternate drops/straight across match/overlap and double cut.</p> <p>Baresque recommends and supplies Roman brand adhesives and primers.</p>
Care Instructions	<p>Always use a clean, white, soft cloth.</p> <p>Use cloth with any of the following in preferred order of us:</p> <ol style="list-style-type: none">1: Clear warm water2: Mild solution of liquid detergent and warm water3: Isopropyl Alcohol (a.k.a. rubbing alcohol)4: Do not use solvent based cleaning agents, lacquer thinners, nail polish remover, pine oil or cleaning agents containing bleach, which may cause discoloration over a period of time.5: It is recommended that cleaning be done with a natural sponge. A cloth or towel should only be used to tamp dry (not rub). Do not use manmade (i.e. polyester) sponges.
Warranty	<p>5-year warranty. Visit baresque.com.au/warranty for complete details.</p>

MOONDANCE LINE UP

Wallcoverings » Commercial Wallcoverings

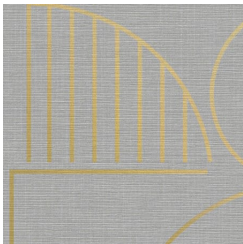
Colour & Finish Options

COLOURWAY CARD

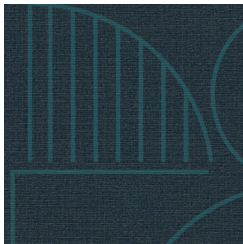
COLOURWAY CARD



AZ53695 BEYOND
PALE



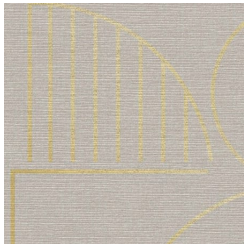
AZ53696 WILD
BREEZES



AZ53697 INTO THE
NAVY



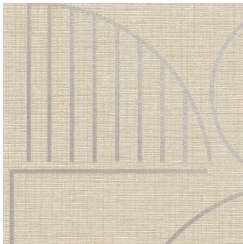
AZ53698 HALL OF
FAME



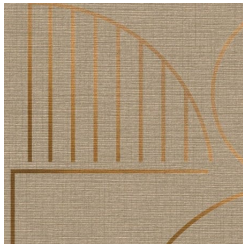
AZ53699 INTO THE
MYSTIC



AZ53700
TRANSISTOR RADIO



AZ53701 HAMPTONS
BEIGE



AZ53702 IRISH LINEN



AZ53703 SAINT
DOMINIC