

# LISMORE

Fabrics » Woven Fabrics



Brand: **Panaz**

Collection: **Lismore**

1300 306 399

[info@baresque.com.au](mailto:info@baresque.com.au)

[baresque.com.au](http://baresque.com.au)

1 of 4

# LISMORE

Fabrics » Woven Fabrics

## COLOURWAY CARD

COLOURWAY CARD



105 INDIGO



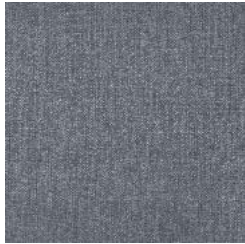
132 TOPAZ



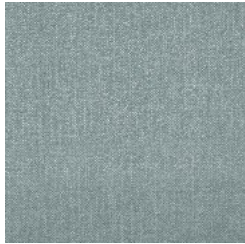
219 SEAFOAM



336 FENNEL



501 SMOKE



506 MIST



574 DARK CORAL



611 DUSKY PINK



804 FAWN



824 OCHRE



837 STONE



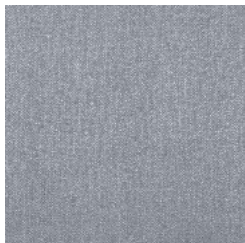
904 PEWTER



905 DOVE



949 NOIR



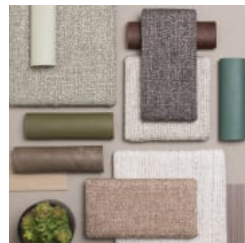
952 PLATINUM



954 GRAPHITE



958 CLOUD



# LISMORE

Fabrics » Woven Fabrics

Lismore is a 138cm woven upholstery that's stain resistant and it's available in 17 colourways.

## ✓ Stain Resistant

Roll Size 140cm x N/A - Available by the lineal metre.

Composition 100% Polyester with FR back coating

Abrasion Martindale 45,000 Wyzenbeek 50,000

Fire Rating Tested in accordance with AS1530.3  
Spread of Flame Index - 0  
Smoke Developed Index - 5

Warranty 2-year warranty. Visit [baresque.com.au/warranty](https://baresque.com.au/warranty) for complete details.

Lead Time

- 2-weeks (approx.) from Wednesday, subject to stock availability.
- Additional 1-week for Western Australia.
- Express delivery is available subject to a surcharge. Contact Baresque for details and pricing.

Care Instructions Wipe clean routinely with a microfibre cloth, lightly dampened with cold water only. Then dry with a clean absorbent cloth.

Soak up spillages as soon as possible with an absorbent dry cloth to prevent staining.

Note dyes and pigments from indigo jeans, ball point and felt tip pens may permanently stain.

- Do not steam clean - heat seals in stains.
- Do not use bleach.
- Do not tumble dry.
- Do not dry clean.
- Do not fully immerse in water.
- Do not apply solvents, alcohol or any other chemical cleaners.

# LISMORE

Fabrics » Woven Fabrics

---

## Colour & Finish Options