

MADEMOISELLE TWEED ATELIER

Wallcoverings » Decorative Wallcoverings



Brand: **Omexco**

Collections: **Atelier**

Applications: **Walls**

1300 306 399

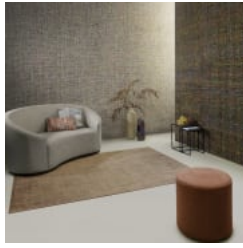
info@baresque.com.au

baresque.com.au

1 of 5

MADemoiselle Tweed Atelier

Wallcoverings » Decorative Wallcoverings



MADemoiselle Tweed Atelier

Wallcoverings » Decorative Wallcoverings

Mademoiselle Tweed is made of a chunky weave with wildly innovative handspun yarns that's available in 4 colourways.

✓ **Light Resistance**

✓ **Washable**

✓ **Ecological**

Description

Authentic craftsmanship embodies this bold collection designed by the creative minds of Omexco. A tactile tribute to the importance of handmade craft in interior design.

Reflecting our fervent desire for a creative renaissance in this increasingly digital world. A fascinating creative journey that reinterprets the legacy of handcraft passed between generations of artisans.

Hand-spun fantasy yarns intertwined into chunky weaves. Recycled sari silk fabrics twisted into ribbons and woven with abaca stem. Handmade paper sculpted into mural artwork. Appliquéd botanical fibres. Striking patchworks of woven natural raffia. Together they burst into this eclectic collection of couture and contemporary wallcoverings.

Destined for luxury interiors, turning every wall into a wondrous work of art, the atelier collection provides our homes with the perfect wallcovering for giving voice to our creativity.

Composition

Heavy weave with handspun yarns.

Weight: 955 g/m2

Environmental Info

The materials contained in these wallcoverings are naturally occurring and renewable resources harvested from farms and coloured with water-based inks.

Pattern Repeat Size

The design does not need to be matched

Roll Size

91cm wide - Available by the lineal metre

Fire Rating

Tested in accordance with AS ISO 9705 2003 for the purpose of determining the Group Number classification as required by the Building Code of Australia for the control of fire spread on interior wall and ceiling linings.

The result achieved was:
Classification - Group 2
Specific Extinction - Less than 250m²/kg

Lead Time

- 2-weeks (approx.) from Wednesday, subject to stock availability.
- Additional 1-week for Western Australia.
- Express delivery is available subject to a surcharge. Contact Baresque for details and pricing.

MADemoiselle Tweed Atelier

Wallcoverings » Decorative Wallcoverings

Suggested Installation

Trim selvedge.

Reverse hang alternate drops/butt join.

Baresque recommends and supply Roman brand adhesives and primers.

Care Instructions

Always use a clean, white, soft cloth.

Remove liquid stains immediately using a dry cloth. Avoid hard scrubbing.

For tougher stains, dampen the cloth with warm water or a weak dilution of liquid detergent and apply being careful not to soak the material. Always work towards the centre of the stain so as to avoid further spreading.

Remove any detergent with a clean, damp cloth. Gently pat dry.

Always test in an inconspicuous area first.

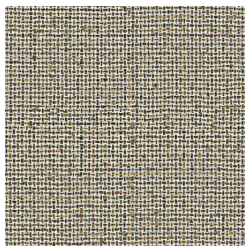
Warranty

2-year warranty. Visit baresque.com.au/warranty for complete details.

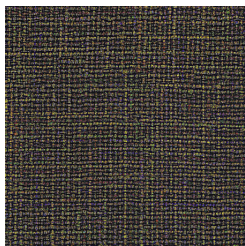
MADemoiselle Tweed Atelier

Wallcoverings » Decorative Wallcoverings

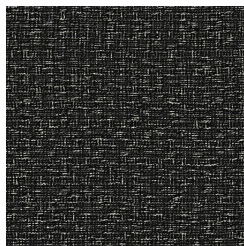
Colour & Finish Options



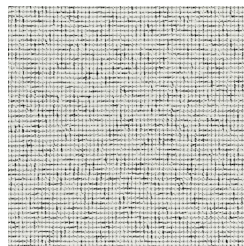
AT 31



AT 32



AT 33



AT 34