

WANDER STACY GARCIA

Wallcoverings » Commercial Wallcoverings



Brand: **Koroseal**

Applications: **Walls**

1300 306 399

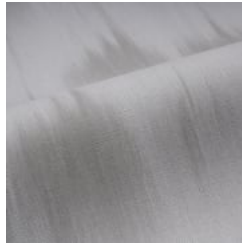
info@baresque.com.au

baresque.com.au

1 of 5

WANDER STACY GARCIA

Wallcoverings » Commercial Wallcoverings



WANDER STACY GARCIA

Wallcoverings » Commercial Wallcoverings

Wander is a soft tonal pattern that brings nature indoor with its free-flowing movement. Available in 10 neutral colours that fit today's interiors.

✓ **Low VOC**

✓ **Bleach Cleanable**

✓ **Anti-Microbial**

Description	Wander is an eclectic expression of wanderlust and exploration, and the ambition to mindfully retreat from your busy surroundings. Immerse yourself in the unknown and discover modern sophistication with a design reminiscent of a waterfall or watercolour painting with fluid shapes moving throughout the pattern.
Composition	Type II Wallcovering 20 oz. ply Woven (Osnaburg) backing
Environmental Info	Formaldehyde free Heavy metals free Perfluorooctanoic acid free No solvent inks Low VOC emissions. Any VOCs dissipate quickly (faster than paint) through normal ventilation and have no recognized adverse impact on indoor air quality. Durability means products do not need to be replaced regularly due to wear and tear and being cleanable, vinyl products are ideal for helping keep commercial environments clean of bacteria. Baresque will only deal with vinyl manufacturers that comply with applicable state and federal regulations, provide a factory that is safe and clean for its employees to work in, recycle scrap and inks during the manufacturing process to minimize waste related to production.
Pattern Repeat Size	84cm V x 132cm H
Roll Size	137cm wide x 27.4m - Available by the lineal metre
Fire Rating	Tested in accordance with AS ISO 9705 2003 for the purpose of determining the Group Number classification as required by the Building Code of Australia for the control of fire spread on interior wall and ceiling linings. The result achieved was: Classification - Group 2 Specific Extinction - Less than 250m ² /kg

WANDER STACY GARCIA

Wallcoverings » Commercial Wallcoverings

Lead Time	<ul style="list-style-type: none">• 2-weeks (approx.) from Wednesday, subject to stock availability.• Additional 1-week for Western Australia.• Express delivery is available subject to a surcharge. Contact Baresque for details and pricing.
-----------	---

Suggested Installation	<p>Non-reverse hang alternate drops/straight across match/overlap and double cut.</p> <p>Baresque recommends and supplies Roman brand adhesives and primers.</p>
------------------------	--

Care Instructions	<p>Use cloth with any of the following in preferred order of use:</p> <ol style="list-style-type: none">1: Clear warm water2: Mild solution of liquid detergent and warm water3: Isopropyl Alcohol (a.k.a. rubbing alcohol) <p>Remove any detergent with a clean, damp cloth. Gently pat dry.</p> <p>For more difficult stains, dampen a soft white cloth with a solution of household bleach (10% bleach / 90% water). Rub gently.</p> <p>Rinse with a water dampened cloth to remove bleach concentration.</p> <p>Do not use solvent based or concentrated abrasive cleaning agents, lacquer thinners or nail polish remover as these may cause discolouration over a period of time.</p> <p>Always test in an inconspicuous area first.</p> <p>If care instructions don't deliver the expected results, cease cleaning method immediately and contact Baresque for assistance.</p>
-------------------	---

Warranty	5-year warranty. Visit baresque.com.au/warranty for complete details.
----------	--

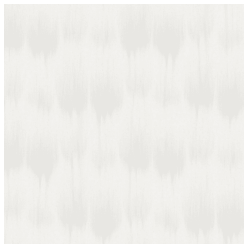
WANDER STACY GARCIA

Wallcoverings » Commercial Wallcoverings

Colour & Finish Options

COLOURWAY CARD

COLOURWAY CARD



WD21-01 APPARATE



WD21-02 BLISS



WD21-03 NEW DRIFT



WD21-04 FLOAT



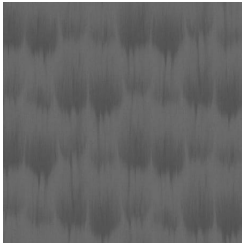
WD21-05 PONDER



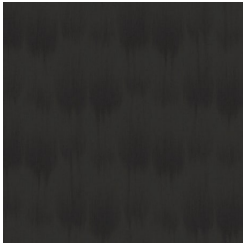
WD21-07 MOXIE



WD21-09 HIKE



WD21-10 LERKIM



WD21-12 VAGABOND



WD21-13 VERVE