

OLIVER

Wallcoverings » Commercial Wallcoverings



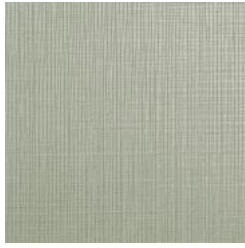
Brand: **Koroseal**

OLIVER

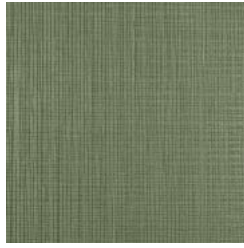
Wallcoverings » Commercial Wallcoverings



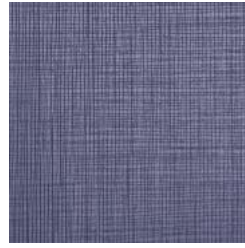
LV21-01 MODERN
WHITE



LV21-02 MOUNTAIN
MIST



LV21-03 SPRIG



LV21-04 BLUEBERRY



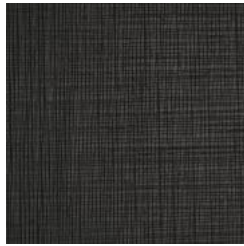
LV21-05 COTTAGE
WHITE



LV21-06 LIMESTONE



LV21-07 MORNING
FROST



LV21-08 EBONY



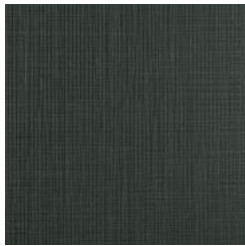
LV21-09 NATURAL
LINEN



LV21-10 ROCKY
SHORE



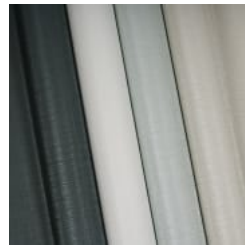
LV21-11 LAGOON



LV21-12 JADE



LV21-13 SILVER LAKE



OLIVER

Wallcoverings » Commercial Wallcoverings

Oliver is an intricate, woven design with a non-directional emboss. It has a matte and satin contrast within the texture. Available in 13 colourways.

✓ **Low VOC**

✓ **Bleach Cleanable**

✓ **Anti-Microbial**

Description

Oliver is an organic texture that offers a calm, soothing retreat from the busyness of the day. This new woven emboss provides a modern, subtle, and airy visual effect to enhance a surrounding, without overwhelming the space.

Roll Size

137cm wide x 27.4m - Available by the lineal metre

Environmental Info

Formaldehyde free

Heavy metals free

Perfluorooctanoic acid free

No solvent inks

Low VOC emissions. Any VOCs dissipate quickly (faster than paint) through normal ventilation and have no recognized adverse impact on indoor air quality.

Durability means products do not need to be replaced regularly due to wear and tear and being cleanable, vinyl products are ideal for helping keep commercial environments clean of bacteria.

Baresque will only deal with vinyl manufacturers that comply with applicable state and federal regulations, provide a factory that is safe and clean for its employees to work in, recycle scrap and inks during the manufacturing process to minimize waste related to production.

Fire Rating

Tested in accordance with AS ISO 9705 2003 for the purpose of determining the Group Number classification as required by the Building Code of Australia for the control of fire spread on interior wall and ceiling linings.

The result achieved was:

Classification - Group 2

Specific Extinction - Less than 250m²/kg

Warranty

5-year warranty. Visit [baresque.com.au/warranty](https://www.baresque.com.au/warranty) for complete details.

Lead Time

- 2-weeks (approx.) from Wednesday, subject to stock availability.
- Additional 1-week for Western Australia.
- Express delivery is available subject to a surcharge. Contact Baresque for details and pricing.

OLIVER

Wallcoverings » Commercial Wallcoverings

Suggested Installation

Non reverse hang/overlap double cut.

Baresque recommends and supplies Roman brand adhesives and primers.

Care Instructions

Use cloth with any of the following in preferred order of use:

1: Clear warm water

2: Mild solution of liquid detergent and warm water

3: Isopropyl Alcohol (a.k.a. rubbing alcohol)

Remove any detergent with a clean, damp cloth. Gently pat dry.

For more difficult stains, dampen a soft white cloth with a solution of household bleach (10% bleach / 90% water). Rub gently.

Rinse with a water dampened cloth to remove bleach concentration.

Do not use solvent based or concentrated abrasive cleaning agents, lacquer thinners or nail polish remover as these may cause discolouration over a period of time.

Always test in an inconspicuous area first.

If care instructions don't deliver the expected results, cease cleaning method immediately and contact Baresque for assistance.

OLIVER

Wallcoverings » Commercial Wallcoverings

Colour & Finish Options