

# INK SPOT LINEN

Wallcoverings » Commercial Wallcoverings



Brand: **Symphony**

Applications: **Walls**

1300 306 399

[info@baresque.com.au](mailto:info@baresque.com.au)

[baresque.com.au](http://baresque.com.au)

1 of 3

# INK SPOT LINEN

Wallcoverings » Commercial Wallcoverings

Ink Spot Linen is a Type II 137cm wide commercial wallcovering with a design pattern resembling linen that's available in 16 colourways.

Description	<p>A classic linen that embodies its muse an artist's canvas. Adding an edge to this traditional textile, Ink Spot Linen plays with texture and pops of color.</p> <p>Thoughtfully curated colorways allow accent hues and tones to be highlighted within your space.</p> <p>Complete your healthcare setting with the fun, youthful blues and purples of Wellness White, or pull out the neutral, soothing striations of Cream and Neutral White for a heavenly atmosphere.</p> <p>From bold blues like Navy and Seaglass to the luxurious look of Cloud or Fawn, Ink Spot Linen hits the spot.</p>
Pattern Repeat Size	18""h X 54"" w 45.72cm h X 137.16cm w
Roll Size	137cm wide x 27.4m - Available by the lineal metre
Lead Time	<ul style="list-style-type: none"><li>• 2-weeks (approx.) from Wednesday, subject to stock availability.</li><li>• Additional 1-week for Western Australia.</li><li>• Express delivery is available subject to a surcharge. Contact Baresque for details and pricing.</li></ul>
Suggested Installation	<p>Reverse hang / overlap and double cut.</p> <p>Baresque recommends and supply Roman brand adhesives and primers.</p>
Care Instructions	<p>Always use a clean, white, soft cloth.</p> <p>Use cloth with any of the following in preferred order of us:</p> <ol style="list-style-type: none"><li>1: Clear warm water</li><li>2: Mild solution of liquid detergent and warm water</li><li>3: Isopropyl Alcohol (a.k.a. rubbing alcohol)</li><li>4: Do not use solvent based cleaning agents, lacquer thinners, nail polish remover, pine oil or cleaning agents containing bleach, which may cause discoloration over a period of time.</li><li>5: It is recommended that cleaning be done with a natural sponge. A cloth or towel should only be used to tamp dry (not rub). Do not use manmade (i.e. polyester) sponges.</li></ol>

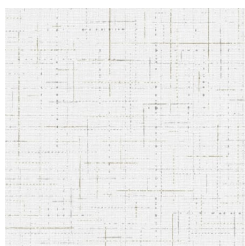
# INK SPOT LINEN

Wallcoverings » Commercial Wallcoverings

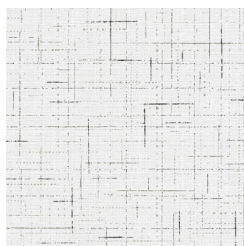
## Colour & Finish Options

### COLOURWAY CARD

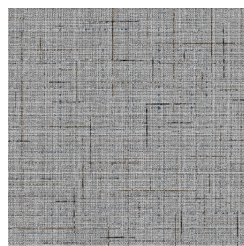
COLOURWAY CARD



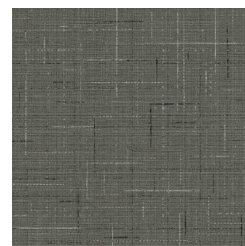
AZ53670 NEUTRAL  
WHITE



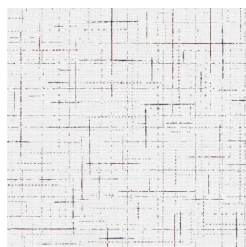
AZ53671 BLACK &  
WHITE



AZ53672 CLASSIC  
GLEN



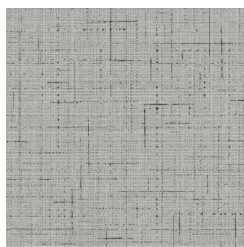
AZ53673 GRANITE



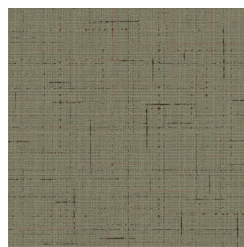
AZ53674 CORPORATE  
WHITE



AZ53675 CLOUD



AZ53676 FOG



AZ53677 CHINCHILLA



AZ53678 CREAM



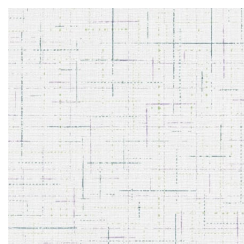
AZ53679 CALM



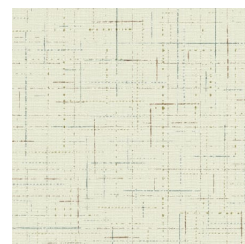
AZ53680 FAWN



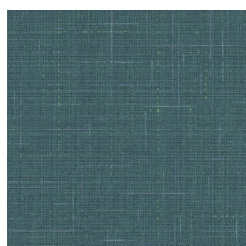
AZ53681 DUSK



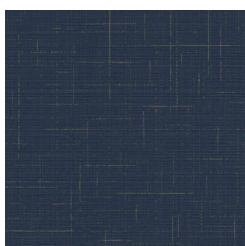
AZ53682 CLASSIC  
GLEN



AZ53683 ARIZON  
CREAM



AZ53684 SEAGLASS



AZ53685 NAVY