

ALL ABOUT BIG GEO

Wallcoverings » Commercial Wallcoverings



Brand: **Bolta**

Applications: **Walls**

1300 306 399

info@baresque.com.au

baresque.com.au

1 of 4

ALL ABOUT BIG GEO

Wallcoverings » Commercial Wallcoverings

All About Big Geo is a commercial wallcovering with a softly-structured silhouette that's available in 8 colourways. Bleach cleanable

Description	<p>New patterns, All About Geo and All About Big Geo, are the ideal print partners to All About Linen's crisp, convincing texture.</p> <p>The return of curved elements in furniture and architecture to today's design toolbox inspired these softly-structured silhouettes. Sized to add "just right" visual impact, All About Geo balances the rigidity of geometric design with the fresh perspective of playfully curved shapes.</p> <p>The subdued colour combinations of Chickpea and Pale Grey offer a subtle arrangement, while the bold graphic of Black & White or Royal Blue makes the pattern noteworthy.</p> <p>The grand scale of All About Big Geo emphasizes the meandering organic movement of these amorphic shapes; soft trending colours like warm Calming Cream, Blushing, or glamorous Pitch-Black all make for quite a statement.</p>
Composition	Vinyl face on a fabric backing Equivalent to 20oz (452 g/m ²)
Pattern Repeat Size	60.96 cm h x 142.24 cm w
Roll Size	137cm wide x 27.4m - Available by the lineal metre
Lead Time	<ul style="list-style-type: none">• 2-weeks (approx.) from Wednesday, subject to stock availability.• Additional 1-week for Western Australia.• Express delivery is available subject to a surcharge. Contact Baresque for details and pricing.
Suggested Installation	<p>Non-reverse hang alternate drops/straight across match/overlap and double cut.</p> <p>Baresque recommends and supplies Roman brand adhesives and primers.</p>

ALL ABOUT BIG GEO

Wallcoverings » Commercial Wallcoverings

Care Instructions

Always use a clean, white, soft cloth.

Use cloth with any of the following in preferred order of us:

1: Clear warm water

2: Mild solution of liquid detergent and warm water

3: Isopropyl Alcohol (a.k.a. rubbing alcohol)

4: Do not use solvent based cleaning agents, lacquer thinners, nail polish remover, pine oil or cleaning agents containing bleach, which may cause discoloration over a period of time.

5: It is recommended that cleaning be done with a natural sponge. A cloth or towel should only be used to tamp dry (not rub). Do not use manmade (i.e. polyester) sponges.

Warranty

5-year warranty. Visit baresque.com.au/warranty for complete details.

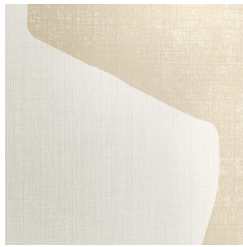
ALL ABOUT BIG GEO

Wallcoverings » Commercial Wallcoverings

Colour & Finish Options

COLOURWAY CARD

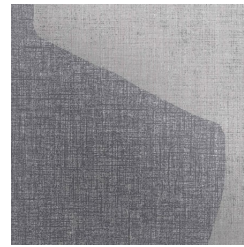
COLOURWAY CARD



BB-AA-01 VANILLA



BB-AA-02 WARM
GREY



BB-AA-03 TITANIUM



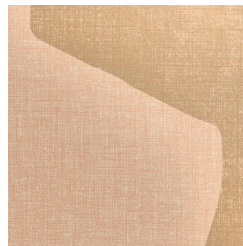
BB-AA-04 PITCH
BLACK



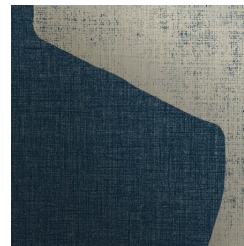
BB-AA-05 PLATINIUM
WHITE



BB-AA-06 CALMING
CREAM



BB-AA-07 BLUSHING



BB-AA-08 DENIM