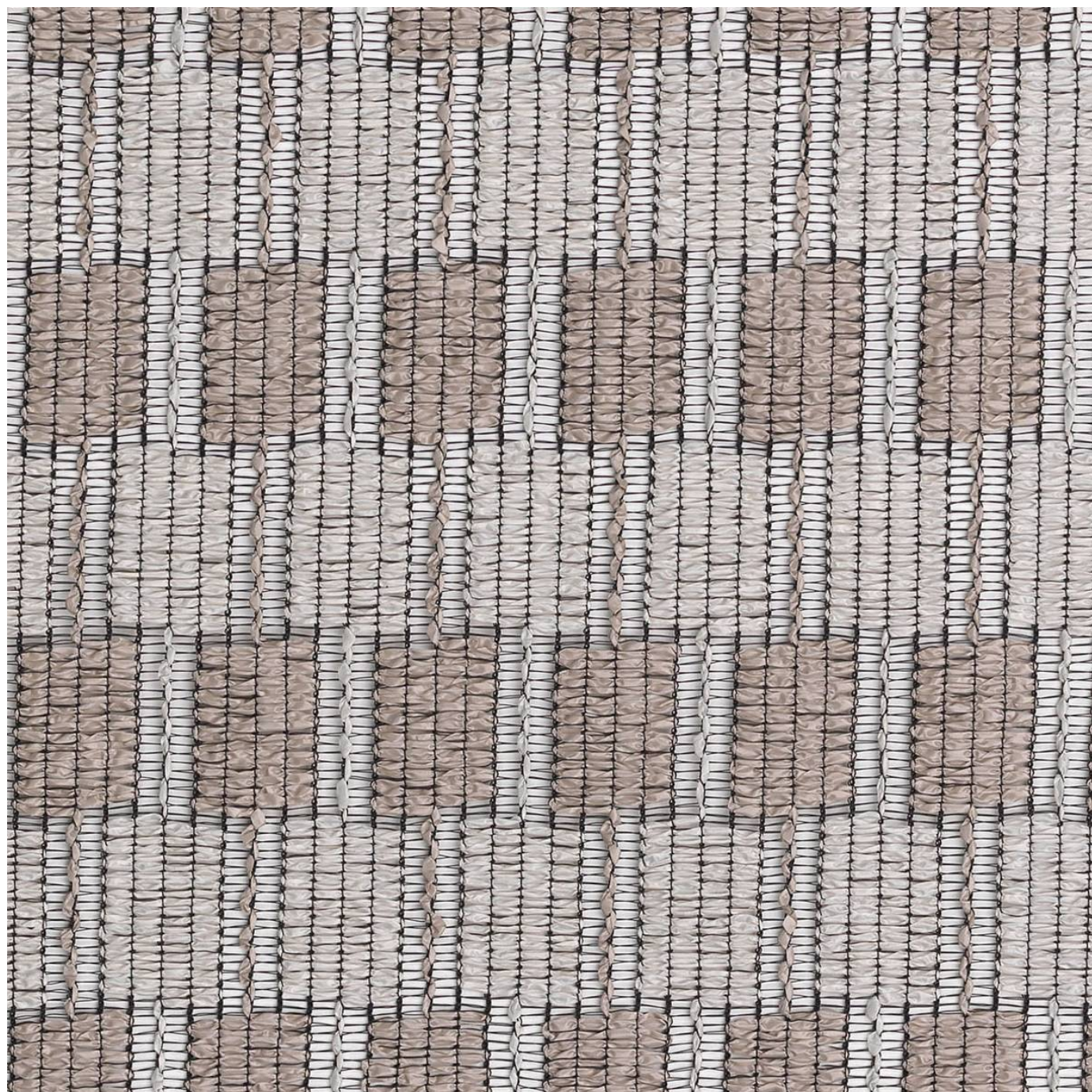


BINARY

Fabrics » Sheer Fabrics



Brand: **Xorel**

Applications: **Other**

1300 306 399

info@baresque.com.au

baresque.com.au

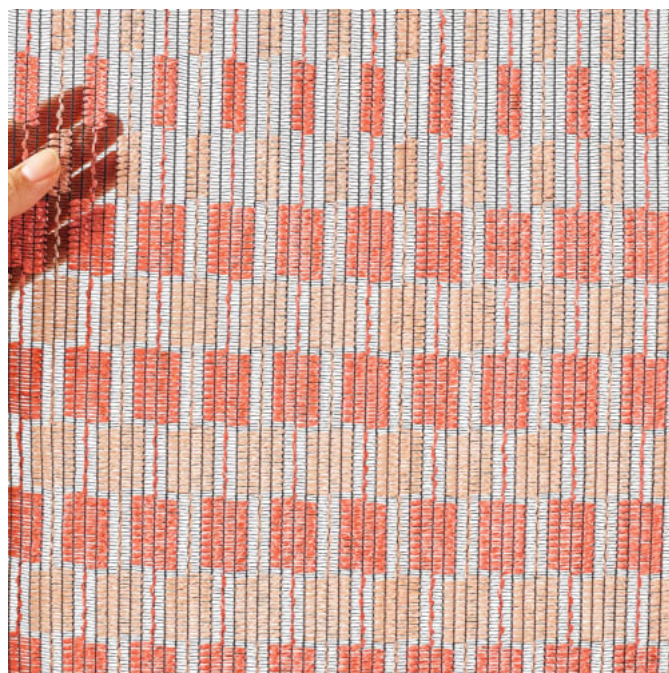
1 of 5

BINARY

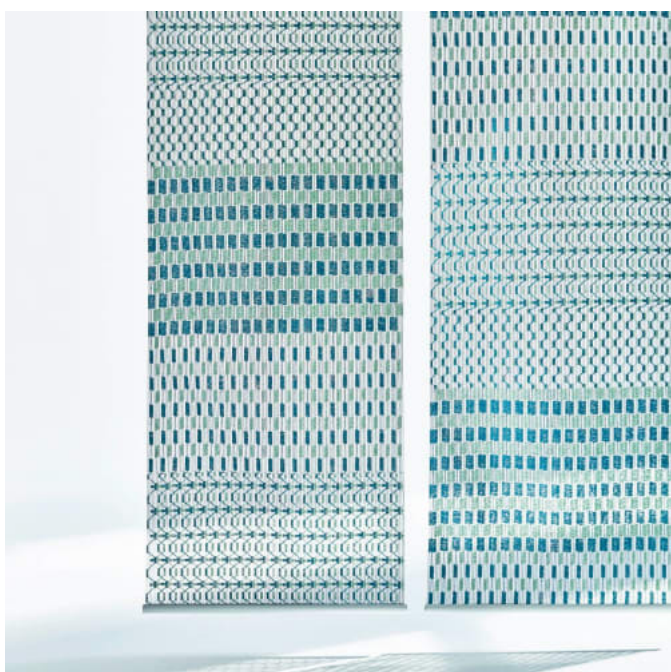
Fabrics » Sheer Fabrics



binary-promo-1.jpg



binary-promo-2.jpg



binary-promo-4.jpg

BINARY

Fabrics » Sheer Fabrics

Binary is an extremely flexible multi-colour quilt-like pattern, designed to achieve a customized installation outcome. Available in 3 colourways.

Description With a repeat length of 110cm, Binary is an extremely flexible multi-colour quilt-like pattern that is designed to achieve a completely customized installation outcome depending on how it is installed.

Composition 100% Xorel

Environmental Info Xorel's high performance does not come at an environmental cost as it achieves high standards for sustainability.

All testing/certifying is done by third party independent organizations including:- Scientific Certification Systems (SCS) – Indoor Air Quality (GOLD)- Vincotte – Biobased Content (LEVELS 3/4)- USDA Biobased – Meeting Government Biobased Regulations (PREFERRED)- Cradle to Cradle Institute – Full Lifecycle Assessment (GOLD)- NSF – FACTS certification (NSF 336)

Xorel products can also help a project achieve multiple credits under LEED for commercial interiors:Material Sourcing (Rapidly Renewable Content)Indoor Air Quality (SCS Indoor Advantage Gold)Material Optimization (Cradle to Cradle Gold)Material Transparency (Healthy Product Declaration)

Pattern Repeat Size 110.5cm V / 1.1cm H

Roll Size 60cm x Approx. 60m - Available by the lineal metre.

Abrasion N/A

Fire Rating Tested in accordance with AS1530.3

Spread of Flame Index - 0

Smoke Developed Index - 4

Lead Time

- 2-weeks (approx.) from Wednesday, subject to stock availability.
- Additional 1-week for Western Australia.
- Express delivery is available subject to a surcharge. Contact Baresque for details and pricing.

BINARY

Fabrics » Sheer Fabrics

Care Instructions

Xorel yarns are non-absorbent; dust and stains cannot penetrate them.

Regular maintenance will keep the fabric looking new for many years. Periodic vacuuming will remove dust that may settle between the yarns.

Most stains that dry between the yarns or on the surface can be eliminated by wiping the fabric with a cloth moistened with hot tap water. Some stains may require additional treatment. These stains can be cleaned with a variety of water or solvent based cleaners.

When using solvent based cleaners on paperbacked Xorel fabric, test on a small area first. Residue from these cleaners must be removed with hot water and a clean sponge. After cleaning, towel dry.

Hardened solids can be removed with stiff brush or a sharp-edged instrument without damaging the fabric. However, the brush or sharp instrument should not be used close to seams.

Hospital grade disinfectant cleaners can be safely used on Xorel fabrics. Always follow the directions for the specific brand being used as contact times may vary depending on the product. Diluted bleach solution (up to 40%) can also be used on Xorel for disinfecting purposes.

Always test in an inconspicuous area first. If care instructions don't deliver the expected results, cease cleaning method immediately and contact Baresque for assistance.

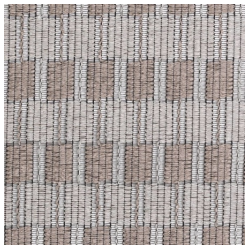
Warranty

7-year warranty. Visit baresque.com.au/warranty for complete details.

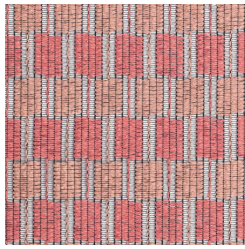
BINARY

Fabrics » Sheer Fabrics

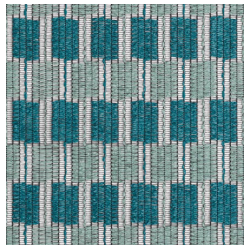
Colour & Finish Options



4792 30



4792 31



4792 32