

# MAGIC COLOUR TAUPES

Wallcoverings » Decorative Wallcoverings



Brand: **Bi Mei**

Applications: **Walls**

1300 306 399

[info@baresque.com.au](mailto:info@baresque.com.au)

[baresque.com.au](http://baresque.com.au)

1 of 4

# MAGIC COLOUR TAUPES

Wallcoverings » Decorative Wallcoverings

Magic Colour decorative wallcoverings are an environmentally friendly way to add texture. Available in 14 taupe hues.

Description	Natural wallpapers are an environmentally friendly way to add texture and beauty to a wide variety of design themes.
-------------	--

Composition	Various. See Magic Colour Product Specification Download for details
-------------	--

Environmental Info	The materials contained in these wallcoverings are naturally occurring and renewable resources harvested from farms and coloured with water-based inks.
--------------------	---

Fire Rating	<p>Tested in accordance with AS ISO 9705 2003 for the purpose of determining the Group Number classification as required by the Building Code of Australia for the control of fire spread on interior wall and ceiling linings.</p> <p>The result achieved was: Classification - Group 2 Specific Extinction - Less than 250m<sup>2</sup>/kg</p>
-------------	--

Suggested Installation	<p>Non-reverse hang / butt join.</p> <p>If your order contains several numbered rolls of one single item/ reference, please first install the roll with the highest number, and then continue to install the other rolls in sequence, in descending order.</p> <p>Measure and cut 3 strip lengths. Add 5 to 10 cm to top and bottom of each strip.</p> <p>For printed patterns, plan your match from the roll before cutting</p> <p>Mark each strip coming from the roll on the back and hang in the same sequence</p> <p>Reverse alternate lengths when instructed to do so by label on the roll</p>
------------------------	---

Care Instructions	<p>Natural wallcoverings should be handled with care, as they are not stain repellent treated.</p> <p>Remove liquid stains immediately using a clean, white, soft, dry cloth tapping on the wallcovering lightly.</p> <p>Use a vacuum cleaner to lightly remove any dust that may have collected.</p> <p>Cleaning with water or detergent is not recommended.</p> <p>Always test in an inconspicuous area first. If care instructions don't deliver the expected results, cease cleaning method immediately and contact Baresque for assistance.</p>
-------------------	--

Warranty	2-year warranty. Visit <a href="https://www.baresque.com.au/warranty">baresque.com.au/warranty</a> for complete details.
----------	--

# MAGIC COLOUR TAUPES

Wallcoverings » Decorative Wallcoverings

---

## Additional Comments

As this design is made of natural materials, some variation in colour within and across batches is an inherent, unavoidable and enjoyable characteristic of the product. When installed, some panelling effect will be apparent.

---



# MAGIC COLOUR TAUPES

Wallcoverings » Decorative Wallcoverings

## Colour & Finish Options



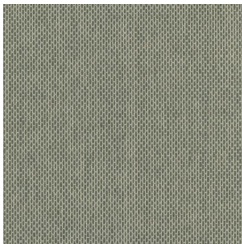
SN101064P BOG  
COLOR



SN101067P FLAXEN



SN101069P DETRITUS  
COLOUR



SN101070P  
ELEPHANT COLOUR



SN101071P PEBBLE  
COLOR



SN101072P CEMENT  
COLOR



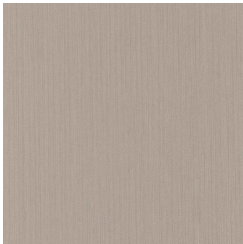
SN101074P MOLE  
COLOR



SN101061P MARBLE  
COLOR



ST101062P BEIGE



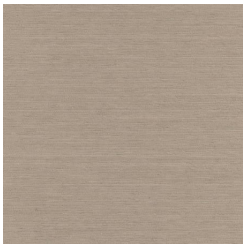
ST101065P MINERAL  
COLOR



ST101066P CANVAS  
COLOUR



ST101068P GRAY  
MATTRESS



ST101073P GRIEGE



ST101075P TRIANON