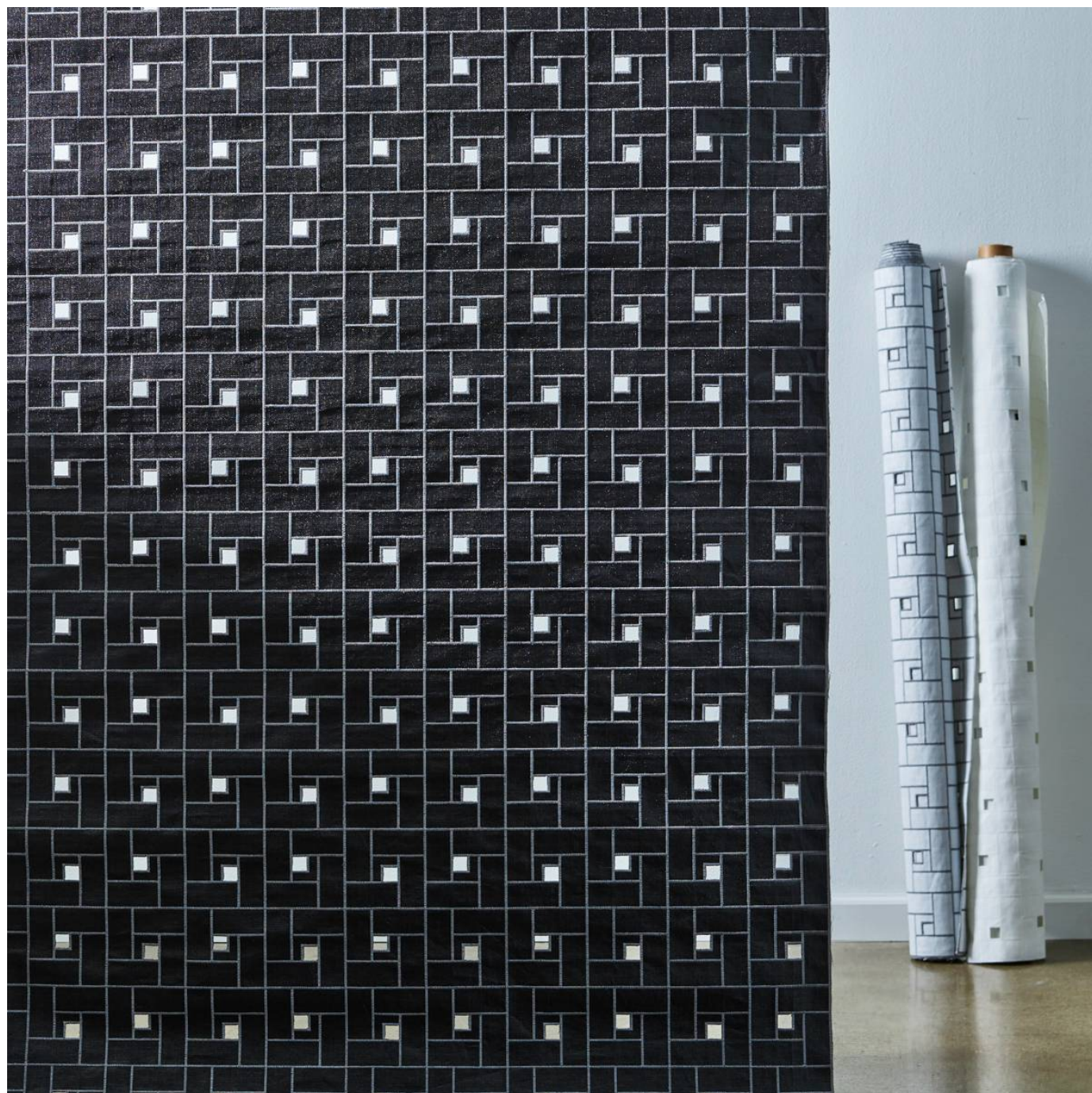


# FACADE VUE

Wallcoverings » Commercial Wallcoverings



Brand: **Xorel**

Applications: **Other**

1300 306 399

[info@baresque.com.au](mailto:info@baresque.com.au)

[baresque.com.au](http://baresque.com.au)

1 of 5

# FACADE VUE

Wallcoverings » Commercial Wallcoverings



facade-promo-3.jpg



facade-colour-63-promo-1.jpg

# FACADE VUE

Wallcoverings » Commercial Wallcoverings

## FACADE - VUE

✓ Bleach Cleanable

### Description

The Vue range of unique textiles are created using embroidery techniques which blur the line between craft and commercial functionality, delivering Architectural textiles to artfully define and divide interior spaces. Xorel is a technologically advanced and environmentally sound problem solving woven textile which enables a wide range of design possibilities to be realized. All the high performance characteristics of Xorel emanate from the yarn. Simply put, nothing is added to the woven product to enhance performance; no finishes, no coatings. FEATURES + BENEFITS: \* Bleach cleanable, anti-microbial \* 7 Year Warranty \* Super durable - 1,000,000 + double rubs \* Multi-tasking Xorel is a registered trademark and license to distribute is granted by permission of Carnegie Fabrics Inc. USA

### Composition

100% Xorel

### Environmental Info

Xorel's high performance does not come at an environmental cost as it achieves high standards for sustainability.

All testing/certifying is done by third party independent organizations including:- Scientific Certification Systems (SCS) – Indoor Air Quality (GOLD)- Vincotte – Biobased Content (LEVELS 3/4)- USDA Biobased – Meeting Government Biobased Regulations (PREFERRED)- Cradle to Cradle Institute – Full Lifecycle Assessment (GOLD)- NSF – FACTS certification (NSF 336)

Xorel products can also help a project achieve multiple credits under LEED for commercial interiors:Material Sourcing (Rapidly Renewable Content)Indoor Air Quality (SCS Indoor Advantage Gold)Material Optimization (Cradle to Cradle Gold)Material Transparency (Healthy Product Declaration)

### Pattern Repeat Size

21cm V / 21cm H

### Roll Size

58cm x N/A - Available by the lineal metre

### Abrasion

N/A

### Fire Rating

Tested in accordance with AS1530.3

Spread of Flame Index - 0

Smoke Developed Index - 4

# FACADE VUE

Wallcoverings » Commercial Wallcoverings

---

## Lead Time

- 2-weeks (approx.) from Wednesday, subject to stock availability.
  - Additional 1-week for Western Australia.
  - Express delivery is available subject to a surcharge. Contact Baresque for details and pricing.
- 

## Care Instructions

Xorel yarns are non-absorbent; dust and stains cannot penetrate them.

Regular maintenance will keep the fabric looking new for many years. Periodic vacuuming will remove dust that may settle between the yarns.

Most stains that dry between the yarns or on the surface can be eliminated by wiping the fabric with a cloth moistened with hot tap water. Some stains may require additional treatment. These stains can be cleaned with a variety of water or solvent based cleaners.

When using solvent based cleaners on paperbacked Xorel fabric, test on a small area first. Residue from these cleaners must be removed with hot water and a clean sponge. After cleaning, towel dry.

Hardened solids can be removed with stiff brush or a sharp-edged instrument without damaging the fabric. However, the brush or sharp instrument should not be used close to seams.

Hospital grade disinfectant cleaners can be safely used on Xorel fabrics. Always follow the directions for the specific brand being used as contact times may vary depending on the product. Diluted bleach solution (up to 40%) can also be used on Xorel for disinfecting purposes.

Always test in an inconspicuous area first. If care instructions don't deliver the expected results, cease cleaning method immediately and contact Baresque for assistance.

---

## Warranty

7-year warranty. Visit [baresque.com.au/warranty](https://www.baresque.com.au/warranty) for complete details.

---

# FACADE VUE

Wallcoverings » Commercial Wallcoverings

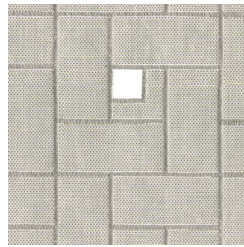
## Colour & Finish Options

### COLOURWAY CARD

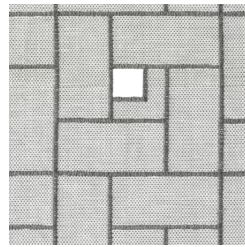
COLOURWAY CARD



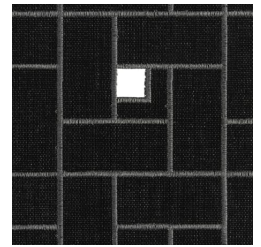
COLOR 60



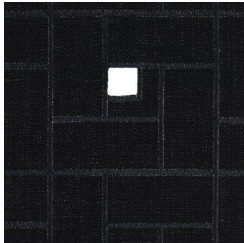
COLOR 61



COLOR 62



COLOR 63



COLOR 64