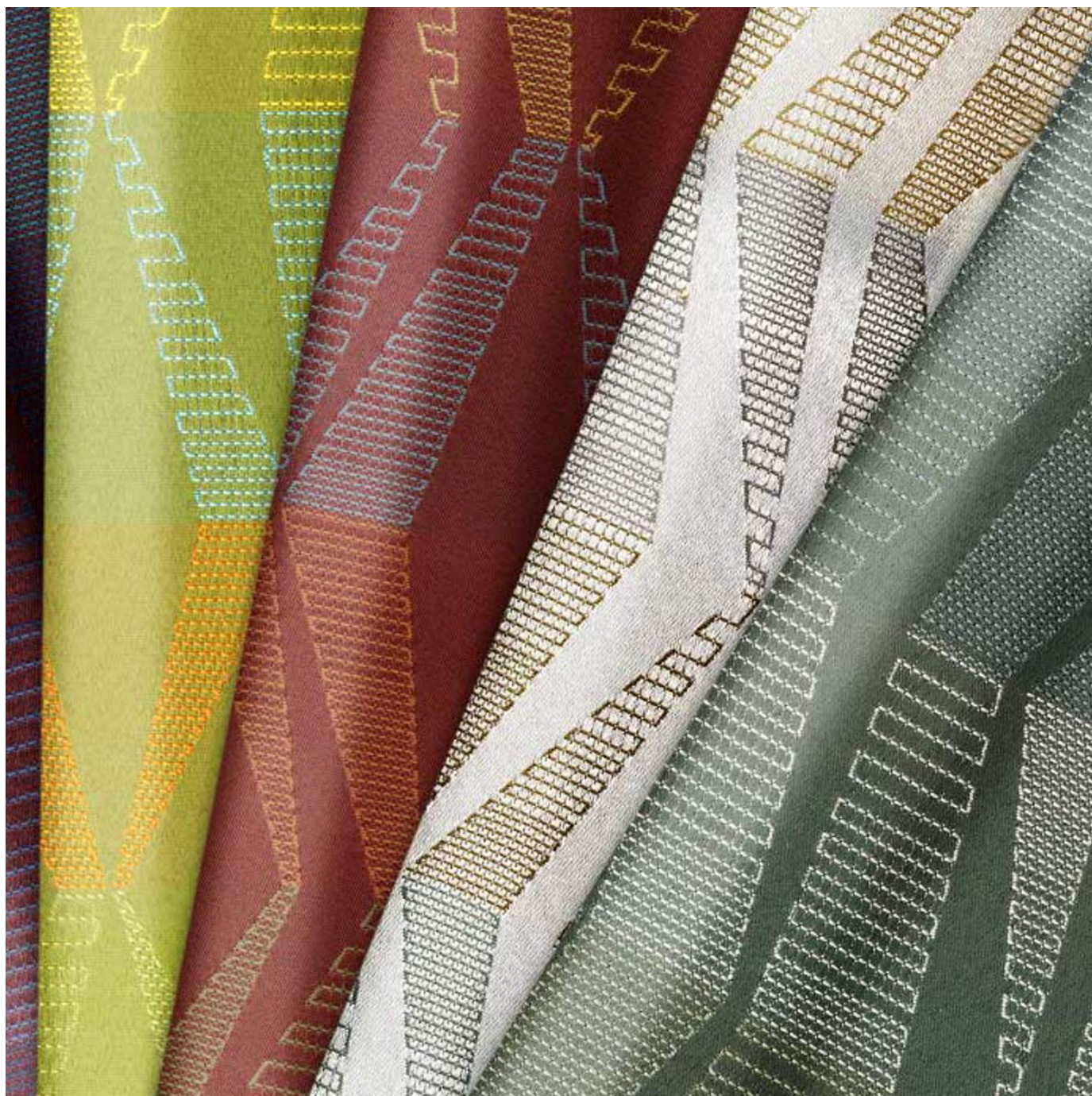


STELLAR CRYPTON

Fabrics » Woven Fabrics



Brand: **Crypton**

Applications: **Upholstery**

1300 306 399

info@baresque.com.au

baresque.com.au

1 of 4

STELLAR CRYPTON

Fabrics » Woven Fabrics

STELLAR (Crypton)

✓ **Bleach Cleanable**

✓ **Moisture Barrier**

Description	CRYPTON is a permanent moisture, soil resistance and anti-microbial protection backing.
-------------	-----------------------------------------------------------------------------------------

Composition	CRYPTON - 100% polyester
-------------	--------------------------

Pattern Repeat Size	35.2cm V / 37.2cm H
---------------------	---------------------

Roll Size	142cm x Approx 45m - 55m - Available by the lineal metre
-----------	----------------------------------------------------------

Abrasion	100,000+ double rubs Wyzenbeek
----------	--------------------------------

Fire Rating	Tested in accordance with AS1530.3 Spread of Flame Index - 0 Smoke Developed Index - 5
-------------	----------------------------------------------------------------------------------------------

Lead Time	<ul style="list-style-type: none">• 2-weeks (approx.) from Wednesday, subject to stock availability.• Additional 1-week for Western Australia.• Express delivery is available subject to a surcharge. Contact Baresque for details and pricing.
-----------	---------------------------------------------------------------------------------------------------------------------------------------------------------------------------------------------------------------------------------------------------------------------------------

STELLAR CRYPTON

Fabrics » Woven Fabrics

Care Instructions

Always use a clean, white, soft cloth.

Prepare a mixture of 1/3 Napisan and 2/3 Fab. Combine the mixture with water to make a paste about the consistency of soft margarine i.e. not too runny. Apply using a soft bristle brush. Leave for 10 minutes.

Use a brush and clean, warm water to remove the paste being sure to renew the water so that it remains clean.

Never use stiff bristles or wire brushes, as they may damage the fabric. To prevent soil build-up, frequent vacuuming is recommended.

Using a cloth to pat dry will help eliminate watermarks.

For more difficult stains, dampen a soft white cloth with a solution of household bleach (10% bleach / 90% water). Rub gently. Rinse with a water dampened cloth to remove bleach concentration.

Always test in an inconspicuous area first. If care instructions don't deliver the expected results, cease cleaning method immediately and contact Baresque for assistance.

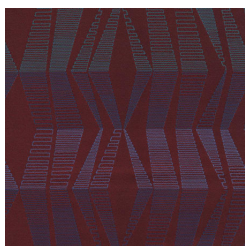
Warranty

2-year warranty. Visit baresque.com.au/warranty for complete details.

STELLAR CRYPTON

Fabrics » Woven Fabrics

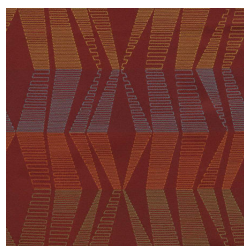
Colour & Finish Options



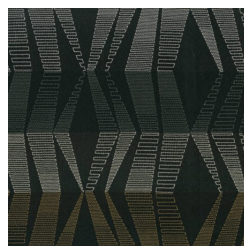
17 Bordeaux



21 Wicker



44 Cider



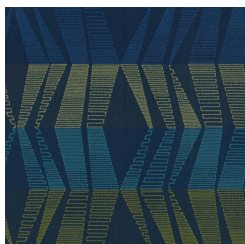
94 Blackbird



902 Lithium



908 Inkwell



3003 Shoreline