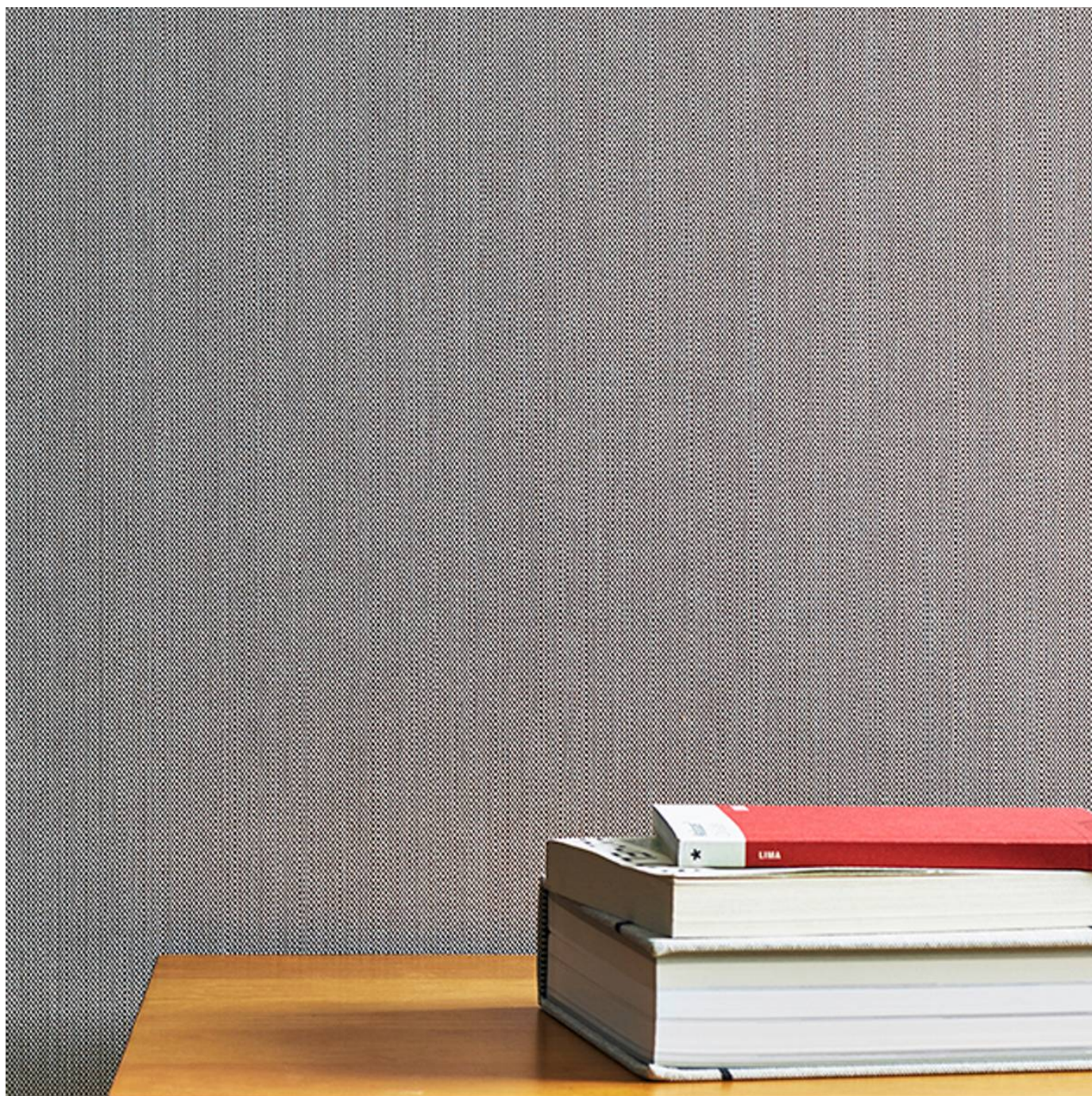


SAHARA MATTE

Wallcoverings » Commercial Wallcoverings



Brand: **Xorel**

Applications: **Walls, Upholstery**

SAHARA MATTE

Wallcoverings » Commercial Wallcoverings



sahara-matte-
promo-3.jpg



sahara-matte-
promo-4.jpg

SAHARA MATTE

Wallcoverings » Commercial Wallcoverings

Sahara Matte has a delustered appearance echoing the dry, crisp nature of the Sahara Desert. Available in 33 colours.

- ✓ Bleach Cleanable
- ✓ High Stain Resistance
- ✓ Solution Dyed Yarns
- ✓ Environmentally Friendly
- ✓ Phthalate Free
- ✓ Ultra Performance
- ✓ Extended Warranty
- ✓ PVC-Free

Description	Xorel is a technologically advanced and environmentally sound problem solving woven textile which enables a wide range of design possibilities to be realized. All the high performance characteristics of Xorel emanate from the yarn. Simply put, nothing is added to the woven product to enhance performance; no finishes, no coatings. FEATURES + BENEFITS: * Bleach cleanable, anti-microbial * 7 Year Warranty * Super durable - 1,000,000 + double rubs * Multi-tasking Xorel is a registered trademark and license to distribute is granted by permission of Carnegie Fabrics Inc. USA
How to Specify	1. Colour 2. Backing - Available Unbacked or with X-Protect Wall, X-Protect Sit or Acrylic backings. Check out the Xorel Backings guide on the DOWNLOAD tab.
Composition	100% Xorel. Available Unbacked (for wrapped panels) or with X-Protect Wall (for wallcoverings), X-Protect Sit (for upholstery) or acrylic (for wrapped panels with glue) backings
Environmental Info	<p>Xorel's high performance does not come at an environmental cost as it achieves high standards for sustainability.</p> <p>All testing/certifying is done by third party independent organizations including:- Scientific Certification Systems (SCS) – Indoor Air Quality (GOLD)- Vincotte – Biobased Content (LEVELS 3/4)- USDA Biobased – Meeting Government Biobased Regulations (PREFERRED)- Cradle to Cradle Institute – Full Lifecycle Assessment (GOLD)- NSF – FACTS certification (NSF 336)</p> <p>Xorel products can also help a project achieve multiple credits under LEED for commercial interiors:Material Sourcing (Rapidly Renewable Content)Indoor Air Quality (SCS Indoor Advantage Gold)Material Optimization (Cradle to Cradle Gold)Material Transparency (Healthy Product Declaration)</p>
Pattern Repeat Size	N/A

SAHARA MATTE

Wallcoverings » Commercial Wallcoverings

Roll Size	Unbacked - 142cm
	X-Protect Wall - 132cm
	X-Protect Sit - 137cm
	Acrylic Backed - 137cm x Approx 60m - available by the lineal metre.
	MINIMUM ORDER for X-Protect Sit - 5 lineal metres
	MINIMUM ORDER for Acrylic Backed - 15 lineal metres
Abrasion	1,000,000 + double rubs Wyzenbeek
Fire Rating	As a wallcovering - Tested in accordance with AS/NZS 3837 and AS 5637.1:2015 for the purposes of Group Number Classification as specified in the NCC Volume One Specification C1.10 Clause 4
	Classification - Group 1
	Specific Extinction - Less than 250 m ² /kg
	As a fabric - Tested in accordance with AS1530.3
	Spread of Flame Index - 0
	Smoke Developed Index - 4
Lead Time	• 5-weeks (approx) from Wednesday subject to stock availability.
	• Additional 1-week for Western Australia.
	• Unbacked 2-3 weeks.
	• Express delivery is available subject to a surcharge. Contact Baresque for details and pricing
Suggested Installation	As a wallcovering - trim selvedge and butt join.
	Download the Installation Instructions for details.
	Baresque recommends and supply Roman brand adhesives and primers.

SAHARA MATTE

Wallcoverings » Commercial Wallcoverings

Care Instructions

Xorel yarns are non-absorbent; dust and stains cannot penetrate them.

Regular maintenance will keep the fabric looking new for many years. Periodic vacuuming will remove dust that may settle between the yarns.

Most stains that dry between the yarns or on the surface can be eliminated by wiping the fabric with a cloth moistened with hot tap water. Some stains may require additional treatment. These stains can be cleaned with a variety of water or solvent based cleaners.

When using solvent based cleaners on paperbacked Xorel fabric, test on a small area first. Residue from these cleaners must be removed with hot water and a clean sponge. After cleaning, towel dry.

Hardened solids can be removed with stiff brush or a sharp-edged instrument without damaging the fabric. However, the brush or sharp instrument should not be used close to seams.

Hospital grade disinfectant cleaners can be safely used on Xorel fabrics. Always follow the directions for the specific brand being used as contact times may vary depending on the product. Diluted bleach solution (up to 40%) can also be used on Xorel for disinfecting purposes.

Always test in an inconspicuous area first. If care instructions don't deliver the expected results, cease cleaning method immediately and contact Baresque for assistance.

Warranty

7-year warranty. Visit baresque.com.au/warranty for complete details.

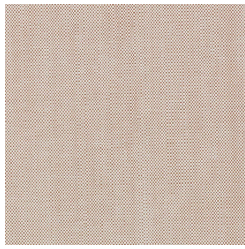
Additional Comments

Check out Baja Embroider for coordinating colours to Sahara Matte. Introducing a breakthrough addition to our Xorel product line - Xorel Matte. This new delustered Xorel aesthetic is achieved solely through a yarn innovation that maintains all the amazing performance characteristics of the proprietary product. The 3 new pattern introductions woven with the Xorel Matte yarn take on a delustered, brushed appearance, creating a highly sought after aesthetic expansion to the existing Xorel range. Xorel is a multi-tasking material being equally suited as a direct applied wallcovering, wrapped panel material or as an upholstery solution. In addition it is notable for its versatility in a wide range of projects; wherever both beauty and performance are required. X Protect Wall prevents stains and other substances from reaching the foam or paper backing. X Protect Sit increases cushion protection and enhances Xorels superior performance attributes. With X Protect, Xorel is 100% moisture repellent.

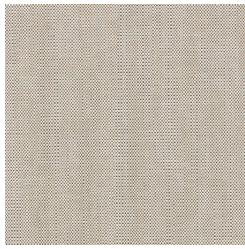
SAHARA MATTE

Wallcoverings » Commercial Wallcoverings

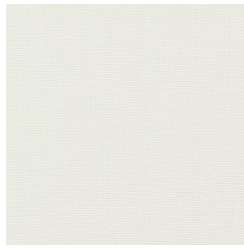
Colour & Finish Options



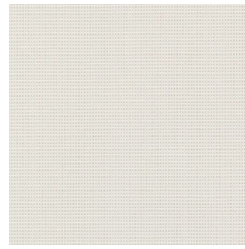
6089 600



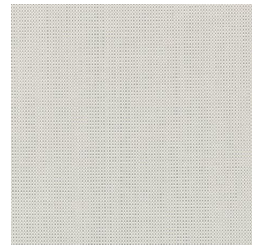
6089 601



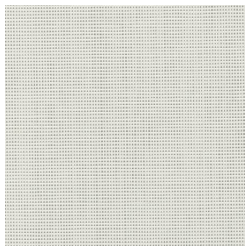
6089 602



6089 603



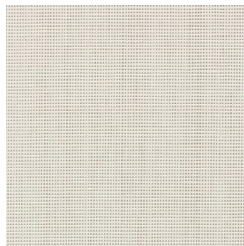
6089 604



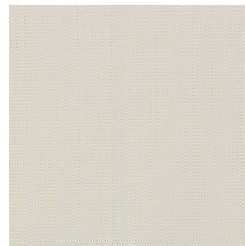
6089 605



6089 606



6089 607



6089 608



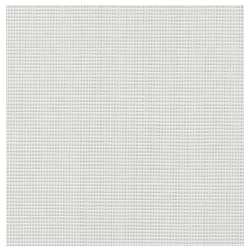
6089 609



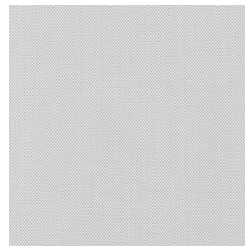
6089 610



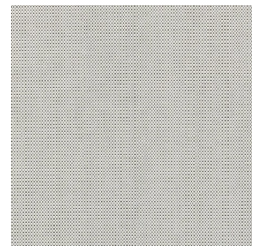
6089 611



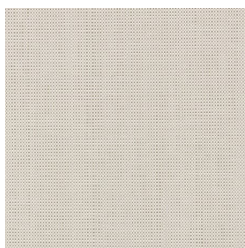
6089 612



6089 613



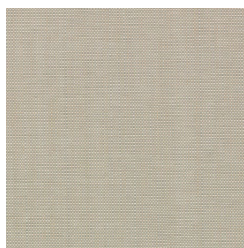
6089 614



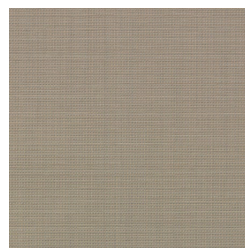
6089 615



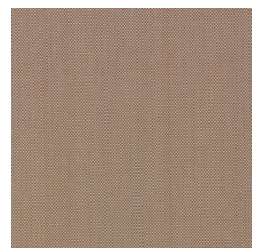
6089 616



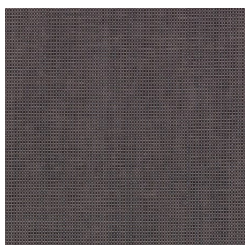
6089 617



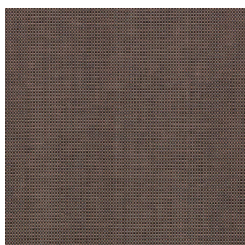
6089 618



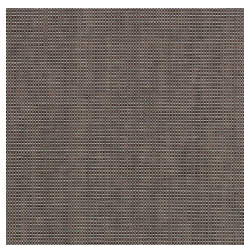
6089 619



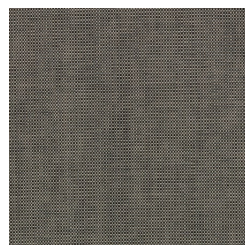
6089 620



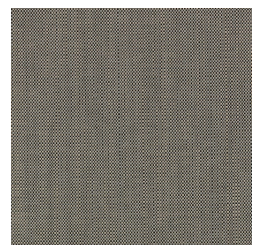
6089 621



6089 622



6089 623



6089 624

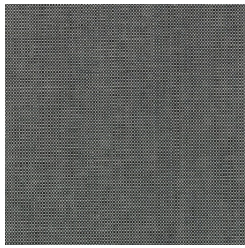
1300 306 399

info@baresque.com.au

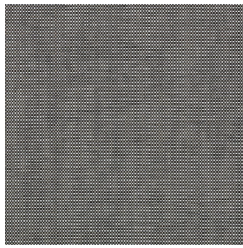
baresque.com.au

SAHARA MATTE

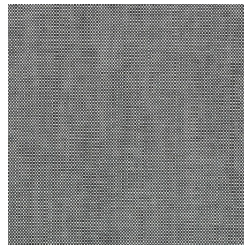
Wallcoverings » Commercial Wallcoverings



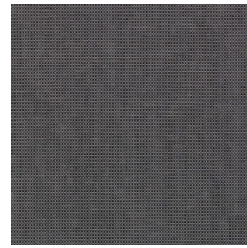
6089 625



6089 626



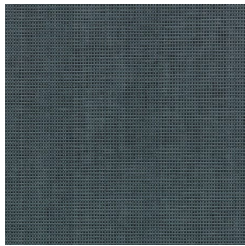
6089 627



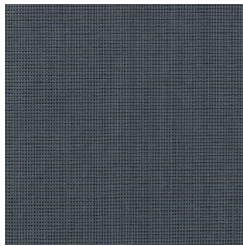
6089 628



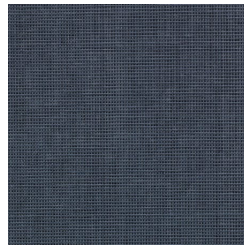
6089 629



6089 630



6089 631



6089 632