

STAR SILK

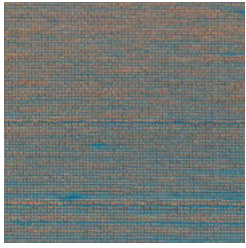
Wallcoverings » Decorative Wallcoverings



Brand: **Bi Mei**

STAR SILK

Wallcoverings » Decorative Wallcoverings



G0115TF3343 BLUE
ON GOLD



G0115TF3344 FINE
NATURAL



G0115TF3345 BUFF
WHITE



G0115TF3346 DRY
WOOD



G0115TF3347 METEOR
SHOWER



G0115TF3348 PURPLE
& GRAY



G0115TF3350 SAGE
BLUE



G0115TF3351
GREYWAY



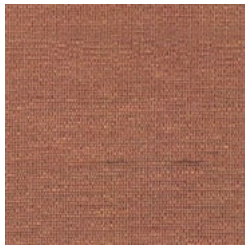
G0115TF3352
METEORIC TUNNEL



G0115TF3353 SATURN



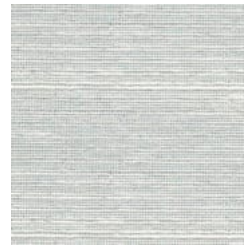
G0115TF3354 GOLDEN
ROSE



G0115TF3355
METALLIC ORANGE



G0115TF3356 JUPITER



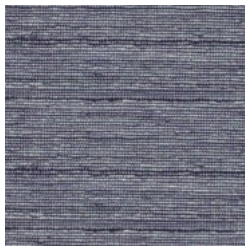
G0115TF3357 SILVER
WHITE



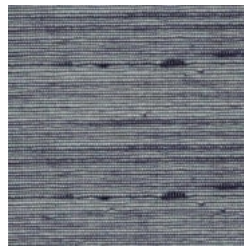
G0115TF3358
CORNICHE ROADS



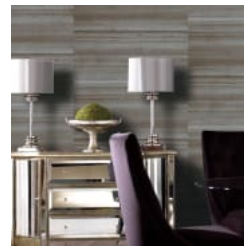
G0115TF3359 GOLDEN
METAL



G0115TF3360 GALAXY



G0115TF3361
NEPTUNE NAVY



star-silk-tf3353-
promo-1.jpg

STAR SILK

Wallcoverings » Decorative Wallcoverings

Star Silk is a 100cm wide decorative wallcovering made of natural fibers that's available in 18 colourways.

Composition 100% silk on a non-woven backing

Pattern Repeat Size N/A

Fire Rating Tested in accordance with AS ISO 9705 2003 for the purpose of determining the Group Number classification as required by the Building Code of Australia for the control of fire spread on interior wall and ceiling linings.

The result achieved was:
Classification - Group 2
Specific Extinction - Less than 250m²/kg

Warranty 2-year warranty. Visit [baresque.com.au/warranty](https://www.baresque.com.au/warranty) for complete details.

Lead Time

- 4-weeks (approx) from Wednesday subject to stock availability.
- Additional 1-week for Western Australia.
- Express delivery is available subject to a surcharge. Contact Baresque for details and pricing.

Suggested Installation

Non-reverse hang / butt join.

If your order contains several numbered rolls of one single item/ reference, please first install the roll with the highest number, and then continue to install the other rolls in sequence, in descending order.

Measure and cut 3 strip lengths. Add 5 to 10 cm to top and bottom of each strip.

For printed patterns, plan your match from the roll before cutting

Mark each strip coming from the roll on the back and hang in the same sequence

Reverse alternate lengths when instructed to do so by label on the roll

Care Instructions

Always use a clean, white, soft cloth.

Remove liquid stains immediately using a dry cloth. Avoid hard scrubbing.

For tougher stains, dampen the cloth with warm water or a weak dilution of liquid detergent and apply being careful not to soak the material. Always work towards the centre of the stain so as to avoid further spreading.

Remove any detergent with a clean, damp cloth. Gently pat dry.

Always test in an inconspicuous area first.

STAR SILK

Wallcoverings » Decorative Wallcoverings

Additional Comments Some variation in colour within and across batches is an inherent, unavoidable and enjoyable characteristic of the product. When installed, some panelling effect will be apparent.

STAR SILK

Wallcoverings » Decorative Wallcoverings

Colour & Finish Options