

NASTED IN NATURE

Wallcoverings » Decorative Wallcoverings



Brand: **Bi Mei**

Applications: **Walls**

1300 306 399

info@baresque.com.au

baresque.com.au

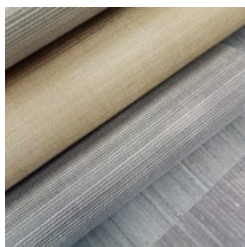
1 of 5

NASTED IN NATURE

Wallcoverings » Decorative Wallcoverings



nasted-in-nature-
promo-2.jpg



nasted-in-nature-
promo-4.jpg

NASTED IN NATURE

Wallcoverings » Decorative Wallcoverings

Nasted in Nature is an environmentally friendly decorative wallcovering with a natural texture that's available in 14 colourways.

Composition	100% abaca on a non-woven backing
Environmental Info	The materials contained in these wallcoverings are naturally occurring and renewable resources harvested from farms and coloured with water-based inks.
Pattern Repeat Size	N/A
Roll Size	91.5cm x 5.5m - Available by the FULL ROLL ONLY
Fire Rating	<p>Tested in accordance with AS ISO 9705 2003 for the purpose of determining the Group Number classification as required by the Building Code of Australia for the control of fire spread on interior wall and ceiling linings.</p> <p>The result achieved was: Classification - Group 2 Specific Extinction - Less than 250m²/kg</p>
Lead Time	<ul style="list-style-type: none">• 4-weeks (approx) from Wednesday subject to stock availability.• Additional 1-week for Western Australia.• Express delivery is available subject to a surcharge. Contact Baresque for details and pricing.
Suggested Installation	<p>Non-reverse hang / butt join.</p> <p>If your order contains several numbered rolls of one single item/ reference, please first install the roll with the highest number, and then continue to install the other rolls in sequence, in descending order.</p> <p>Measure and cut 3 strip lengths. Add 5 to 10 cm to top and bottom of each strip.</p> <p>For printed patterns, plan your match from the roll before cutting</p> <p>Mark each strip coming from the roll on the back and hang in the same sequence</p> <p>Reverse alternate lengths when instructed to do so by label on the roll</p>

NASTED IN NATURE

Wallcoverings » Decorative Wallcoverings

Care Instructions

Always use a clean, white, soft cloth.

Remove liquid stains immediately using a dry cloth. Avoid hard scrubbing.

For tougher stains, dampen the cloth with warm water or a weak dilution of liquid detergent and apply being careful not to soak the material. Always work towards the centre of the stain so as to avoid further spreading.

Remove any detergent with a clean, damp cloth. Gently pat dry.

Always test in an inconspicuous area first.

Warranty

2-year warranty. Visit baresque.com.au/warranty for complete details.

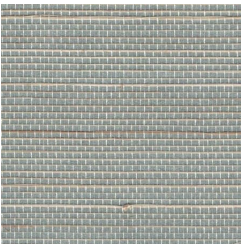
Additional Comments

As this design is made of natural materials, some variation in colour within and across batches is an inherent, unavoidable and enjoyable characteristic of the product. When installed, some panelling effect will be apparent.

NASTED IN NATURE

Wallcoverings » Decorative Wallcoverings

Colour & Finish Options



G0143NA0022
BELGIAN BLOCK



G0143NA0064 SILVER



G0143NA0075 DEEP
SEA



G0143NA0078
CASTOR GRAY



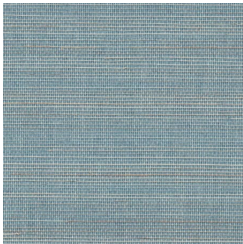
G0143NA0079
DRIZZLE



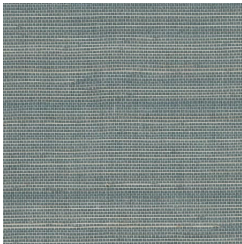
G0143NA0081 QUIET
GRAY



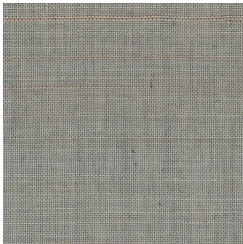
G0143NA0098
WATERFORD



G0143NA0101 GREY &
BLUE



G0143NA0102 TEAL
LEGACY



G0143NA0160
VINTAGE KHAKI



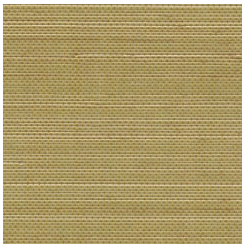
G0143NA2055
OYSTER MUSHROOM



G0143NA2059 SILVER
GRAY



G0143NA2070 MILKY
GREEN



G0143NA6003 FALL
LEAF