

# KANJI KAMI-ITO

Wallcoverings » Decorative Wallcoverings



Brand: **Omexco**

Collection: **Kami-It**

o

1300 306 399

info@baresque.com.au

**baresque.com.au**

1 of 5

# KANJI KAMI-ITO

Wallcoverings » Decorative Wallcoverings



KAM301



KAM302



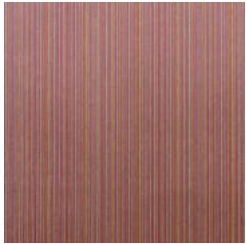
KAM303



KAM304



KAM305



KAM306



KAM307



kanji-kami-ito-  
promo-2.jpg



kanji-kami-ito-  
promo-3.jpg

# KANJI KAMI-ITO

Wallcoverings » Decorative Wallcoverings

Kani is a 91cm wide decorative wallcovering inspired by Japanese art and a fine stripes multi colour pattern that's available in 7 colourways.

**Description** Kami-ito is the Japanese art to take thin paper strips and weave them into delicate and creative paper weaves. This collection consists of plain or tone-on-tone geometric designs that effortlessly create interesting and colourful interior settings, natural and bright. Co-ordinates with Yuzen.

**Roll Size** 91cm wide - Available by the lineal metre

**Composition** Woven paper strips on non-woven backing 295g/m<sup>2</sup>

**Pattern Repeat Size** N/A

**Environmental Info** The materials contained in these wallcoverings are naturally occurring and renewable resources harvested from farms and coloured with water-based inks.

**Fire Rating** Tested in accordance with AS ISO 9705 2003 for the purpose of determining the Group Number classification as required by the Building Code of Australia for the control of fire spread on interior wall and ceiling linings.

The result achieved was:  
Classification - Group 2  
Specific Extinction - Less than 250m<sup>2</sup>/kg

**Warranty** 2-year warranty. Visit [baresque.com.au/warranty](https://www.baresque.com.au/warranty) for complete details.

**Lead Time**

- 2-weeks (approx.) from Wednesday, subject to stock availability.
- Additional 1-week for Western Australia.
- Express delivery is available subject to a surcharge. Contact Baresque for details and pricing.

# KANJI KAMI-ITO

Wallcoverings » Decorative Wallcoverings

---

## Suggested Installation

Non-reverse hang / butt join.

If your order contains several numbered rolls of one single item/ reference, please first install the roll with the highest number, and then continue to install the other rolls in sequence, in descending order.

Measure and cut 3 strip lengths. Add 5 to 10 cm to top and bottom of each strip.

For printed patterns, plan your match from the roll before cutting

Mark each strip coming from the roll on the back and hang in the same sequence

Reverse alternate lengths when instructed to do so by label on the roll

---

## Care Instructions

wc-grasscloth

---

## Additional Comments

Can be installed vertically or horizontally. As this design is made of natural materials, some variation in colour within and across batches is an inherent, unavoidable and enjoyable characteristic of the product. When installed, some panelling effect will be apparent.

---

# KANJI KAMI-ITO

Wallcoverings » Decorative Wallcoverings

---

## Colour & Finish Options