

INLAID SISAL HIMALAYA CRAFT

Wallcoverings » Decorative Wallcoverings



Brand: **Bi Mei**

Applications: **Walls**

1300 306 399

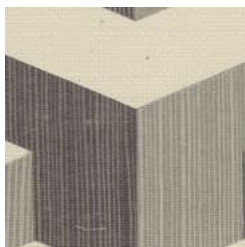
info@baresque.com.au

baresque.com.au

1 of 5

INLAID SISAL HIMALAYA CRAFT

Wallcoverings » Decorative Wallcoverings



inlaid-sisal-himalaya-
craft-gl460-01.jpg

INLAID SISAL HIMALAYA CRAFT

Wallcoverings » Decorative Wallcoverings

inlaid Sisal is a 91cm wide decorative wallcovering made of sustainable fibers and a cubist pattern that's available in 6 colourways.

Description	Himalaya Craft wallcoverings start with selection of the finest sustainable fibers which are then built on to create luxury printed / woven products that bring out their inherent beauty.
Composition	100% Natural Sisal on Paper backing
Environmental Info	The materials contained in these wallcoverings are naturally occurring and renewable resources harvested from farms and coloured with water-based inks.
Pattern Repeat Size	12.5cm V
Roll Size	91cm wide x 5.5m - Available by the full roll only
Fire Rating	<p>Tested in accordance with AS ISO 9705 2003 for the purpose of determining the Group Number classification as required by the Building Code of Australia for the control of fire spread on interior wall and ceiling linings.</p> <p>The result achieved was: Classification - Group 2 Specific Extinction - Less than 250m²/kg</p>
Lead Time	<ul style="list-style-type: none">• 2-weeks (approx.) from Wednesday, subject to stock availability.• Additional 1-week for Western Australia.• Express delivery is available subject to a surcharge. Contact Baresque for details and pricing.
Suggested Installation	<p>Non-reverse hang / butt join.</p> <p>If your order contains several numbered rolls of one single item/ reference, please first install the roll with the highest number, and then continue to install the other rolls in sequence, in descending order.</p> <p>Measure and cut 3 strip lengths. Add 5 to 10 cm to top and bottom of each strip.</p> <p>For printed patterns, plan your match from the roll before cutting</p> <p>Mark each strip coming from the roll on the back and hang in the same sequence</p> <p>Reverse alternate lengths when instructed to do so by label on the roll</p>

INLAID SISAL HIMALAYA CRAFT

Wallcoverings » Decorative Wallcoverings

Care Instructions

Natural wallcoverings should be handled with care, as they are not stain repellent treated.

Remove liquid stains immediately using a clean, white, soft, dry cloth tapping on the wallcovering lightly.

Use a vacuum cleaner to lightly remove any dust that may have collected.

Cleaning with water or detergent is not recommended.

Always test in an inconspicuous area first. If care instructions don't deliver the expected results, cease cleaning method immediately and contact Baresque for assistance.

Warranty

2-year warranty. Visit baresque.com.au/warranty for complete details.

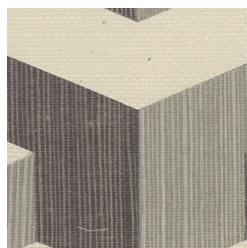
Additional Comments

As this design is made of natural materials, some variation in colour within and across batches is an inherent, unavoidable and enjoyable characteristic of the product. When installed, some panelling effect will be apparent.

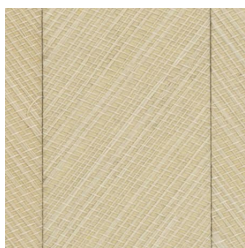
INLAID SISAL HIMALAYA CRAFT

Wallcoverings » Decorative Wallcoverings

Colour & Finish Options



GL460-01 CUBE
GRASS WEAVE
CAMEL
& IRON



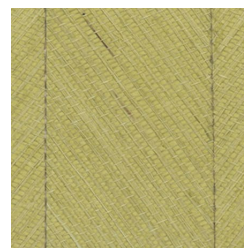
GL460-02 CUBE
GRASS WEAVE BEIGE



GL460-03 CUBE
GRASS WEAVE
RUBBER GREEN



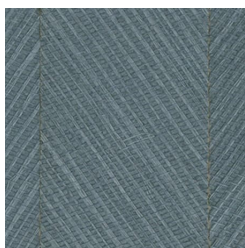
GL460-04 CUBE
GRASS WEAVE BLACK
BLUE



GL460-05 CUBE
GRASS WEAVE BLACK
BLUE



GL460-06 CUBE
GRASS WEAVE
VERMILLION



GL460-07 CUBE
GRASS WEAVE NAVY
BLUE