

CRUSHED LINEN SHADES OF PALE

Wallcoverings » Decorative Wallcoverings



Brand: **Omexco**

Collections: **Shades of Pale**

Applications: **Walls**

1300 306 399

info@baresque.com.au

baresque.com.au

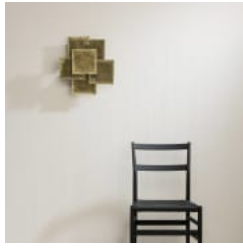
1 of 5

CRUSHED LINEN SHADES OF PALE

Wallcoverings » Decorative Wallcoverings



crushed-linen-shades-of-pale-promo-2.jpg



crushed-linen-shades-of-pale-promo-3.jpg

CRUSHED LINEN SHADES OF PALE

Wallcoverings » Decorative Wallcoverings

Crushed Linen is a 110cm wide decorative wallcovering composed of crushed line on a non-woven backing displayed in 2 neutral colours.

Composition	Crushed linen on a non-woven backing 269g/m ²
Pattern Repeat Size	N/A
Roll Size	110cm wide - Available by the lineal metre
Fire Rating	<p>Tested in accordance with AS ISO 9705 2003 for the purpose of determining the Group Number classification as required by the Building Code of Australia for the control of fire spread on interior wall and ceiling linings.</p> <p>The result achieved was: Classification - Group 2 Specific Extinction - Less than 250m²/kg</p>
Lead Time	<ul style="list-style-type: none">• 2-weeks (approx.) from Wednesday, subject to stock availability.• Additional 1-week for Western Australia.• Express delivery is available subject to a surcharge. Contact Baresque for details and pricing.
Suggested Installation	<p>Non-reverse hang / butt join.</p> <p>If your order contains several numbered rolls of one single item/ reference, please first install the roll with the highest number, and then continue to install the other rolls in sequence, in descending order.</p> <p>Measure and cut 3 strip lengths. Add 5 to 10 cm to top and bottom of each strip.</p> <p>For printed patterns, plan your match from the roll before cutting</p> <p>Mark each strip coming from the roll on the back and hang in the same sequence</p> <p>Reverse alternate lengths when instructed to do so by label on the roll</p>

CRUSHED LINEN SHADES OF PALE

Wallcoverings » Decorative Wallcoverings

Care Instructions

Natural wallcoverings should be handled with care, as they are not stain repellent treated.

Remove liquid stains immediately using a clean, white, soft, dry cloth tapping on the wallcovering lightly.

Use a vacuum cleaner to lightly remove any dust that may have collected.

Cleaning with water or detergent is not recommended.

Always test in an inconspicuous area first. If care instructions don't deliver the expected results, cease cleaning method immediately and contact Baresque for assistance.

Warranty

2-year warranty. Visit baresque.com.au/warranty for complete details.

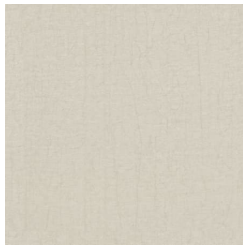
CRUSHED LINEN SHADES OF PALE

Wallcoverings » Decorative Wallcoverings

Colour & Finish Options



SOP2081



SOP2082