

COLOURFUL ABACA HIMALAYA CRAFT

Wallcoverings » Decorative Wallcoverings



Brand: **Bi Mei**

Applications: **Walls**

1300 306 399

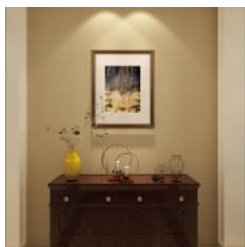
info@baresque.com.au

baresque.com.au

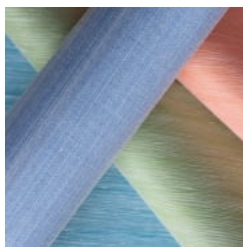
1 of 6

COLOURFUL ABACA HIMALAYA CRAFT

Wallcoverings » Decorative Wallcoverings



colourful-abaca-
himalaya-craft-
promo-3.jpg



4olourful-abaca-
himalaya-craft-
promo-3.jpg

COLOURFUL ABACA HIMALAYA CRAFT

Wallcoverings » Decorative Wallcoverings

Colourful Abaca is a 91cm wide decorative wallcovering that's made of natural materials and renewable resources. Available in 47 colourways.

Description	Himalaya Craft wallcoverings start with selection of the finest sustainable fibers which are then built on to create luxury printed / woven products that bring out their inherent beauty.
Composition	100% Abaca on Paper backing
Environmental Info	The materials contained in these wallcoverings are naturally occurring and renewable resources harvested from farms and coloured with water-based inks.
Pattern Repeat Size	Random Match
Roll Size	91cm wide x 5.5m - Available by the full roll only
Fire Rating	<p>Tested in accordance with AS ISO 9705 2003 for the purpose of determining the Group Number classification as required by the Building Code of Australia for the control of fire spread on interior wall and ceiling linings.</p> <p>The result achieved was: Classification - Group 2 Specific Extinction - Less than 250m²/kg</p>
Lead Time	<ul style="list-style-type: none">• 2-weeks (approx.) from Wednesday, subject to stock availability.• Additional 1-week for Western Australia.• Express delivery is available subject to a surcharge. Contact Baresque for details and pricing.
Suggested Installation	<p>Non-reverse hang / butt join.</p> <p>If your order contains several numbered rolls of one single item/ reference, please first install the roll with the highest number, and then continue to install the other rolls in sequence, in descending order.</p> <p>Measure and cut 3 strip lengths. Add 5 to 10 cm to top and bottom of each strip.</p> <p>For printed patterns, plan your match from the roll before cutting</p> <p>Mark each strip coming from the roll on the back and hang in the same sequence</p> <p>Reverse alternate lengths when instructed to do so by label on the roll</p>

COLOURFUL ABACA HIMALAYA CRAFT

Wallcoverings » Decorative Wallcoverings

Care Instructions

Natural wallcoverings should be handled with care, as they are not stain repellent treated.

Remove liquid stains immediately using a clean, white, soft, dry cloth tapping on the wallcovering lightly.

Use a vacuum cleaner to lightly remove any dust that may have collected.

Cleaning with water or detergent is not recommended.

Always test in an inconspicuous area first. If care instructions don't deliver the expected results, cease cleaning method immediately and contact Baresque for assistance.

Warranty

2-year warranty. Visit baresque.com.au/warranty for complete details.

Additional Comments

As this design is made of natural materials, some variation in colour within and across batches is an inherent, unavoidable and enjoyable characteristic of the product. When installed, some panelling effect will be apparent.

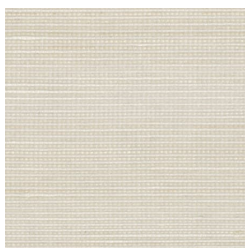
COLOURFUL ABACA HIMALAYA CRAFT

Wallcoverings » Decorative Wallcoverings

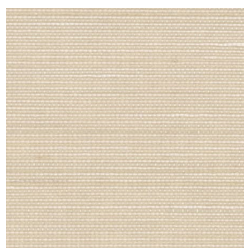
Colour & Finish Options



AC740 01 FRESH
CREAM



AC740 03 FLOATY
WHITE



AC740 06 CREAMY
BEIGE



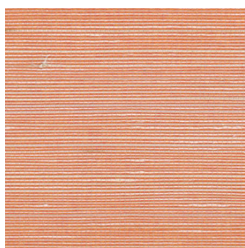
AC740 07
CONSTELLATION
CREAM



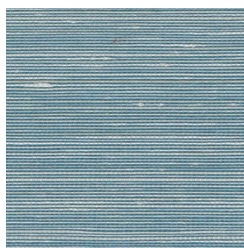
AC740 08 SURFACE
OF HESPER



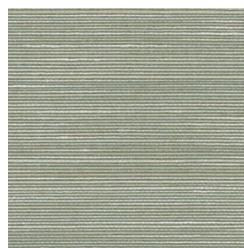
AC740 10 GOLD



AC740 11 SUMMER
ORANGE



AC740 13 DEEP SEA



AC740 17 SEAWEED



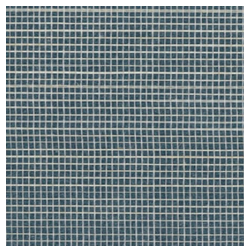
AC740 18 KELP



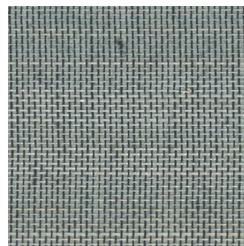
AC740 22
WELLSPRING WHITE



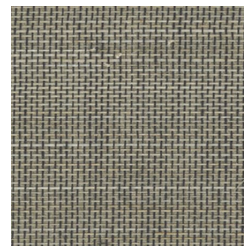
AC740 23
MOONLIGHT SILVER



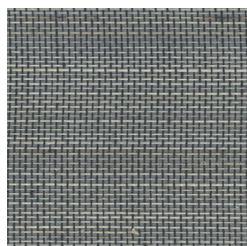
AC740 28 SMOKED
BLUE



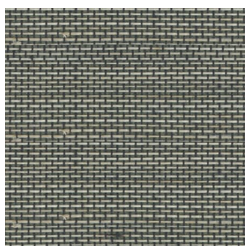
AC740 31 BLUESTONE



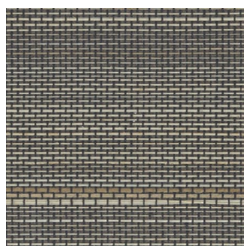
AC740 35 BLUE
ARDESIA



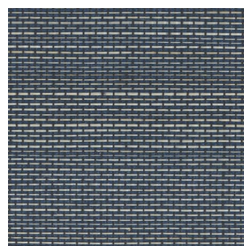
AC740 36 CORNICE
ROADS



AC740 37 MING
METROPOLIS



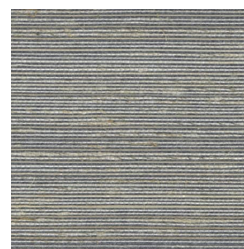
AC740 38 FEATHERED



AC740 39
WATERFORD



AC740 40 RUST



Wallcoverings » Decorative Wallcoverings

[illegible][illegible]

Figure 1. A schematic diagram of the experimental setup. The subject is seated in a chair, viewing a screen displaying a target (a red dot) and a starting point (a green dot). The subject's hand is positioned at the starting point, and the target is located at a distance of 10 cm from the starting point. The subject is instructed to move their hand from the starting point to the target. The screen is divided into a grid of 10x10 cm squares. The starting point is located at the bottom left corner of the grid, and the target is located at the top right corner of the grid. The subject's hand is positioned at the starting point, and the target is located at a distance of 10 cm from the starting point. The subject is instructed to move their hand from the starting point to the target.

[illegible]

Figure 1. The effect of the number of iterations on the accuracy of the proposed algorithm. The accuracy of the proposed algorithm increases with the number of iterations. The accuracy of the proposed algorithm is 100% when the number of iterations is 1000.

A large, dense grid of small, colorful, abstract shapes, possibly representing a data visualization or a complex pattern. The shapes are arranged in a regular, repeating pattern across the entire page, creating a textured, mosaic-like effect. The colors are muted and earthy, including shades of brown, tan, and grey. The overall appearance is that of a high-resolution, pixelated image or a complex data matrix.

[illegible]

 baresque