

ZAMBRA

Wallcoverings » Commercial Wallcoverings



Brand: **Versa**

Applications: **Walls**

1300 306 399

info@baresque.com.au

baresque.com.au

1 of 4

ZAMBRA

Wallcoverings » Commercial Wallcoverings

Zambra is a 137cm wide commercial wallcovering with a stria embossing that's available in 18 colourways. Versatile, durable, and easy to clean.

✓ Bleach Cleanable

Description	Reflective of earthy native craft, Zambra is an intriguing contemporary surface and lustre that enhances the embossing.
-------------	---

Composition	Vinyl face on a fabric backing 20oz (452 g/m ²)
-------------	---

Environmental Info	<p>Formaldehyde free</p> <p>Heavy metals free</p> <p>Perfluorooctanoic acid free</p> <p>No solvent inks</p> <p>Low VOC emissions. Any VOCs dissipate quickly (faster than paint) through normal ventilation and have no recognized adverse impact on indoor air quality.</p> <p>Durability means products do not need to be replaced regularly due to wear and tear and being cleanable, vinyl products are ideal for helping keep commercial environments clean of bacteria.</p> <p>Baresque will only deal with vinyl manufacturers that comply with applicable state and federal regulations, provide a factory that is safe and clean for its employees to work in, recycle scrap and inks during the manufacturing process to minimize waste related to production.</p>
--------------------	--

Pattern Repeat Size	N/A
---------------------	-----

Roll Size	137cm wide x 27.4m - Available by the lineal metre
-----------	--

Fire Rating	<p>Tested in accordance with AS ISO 9705 2003 for the purpose of determining the Group Number classification as required by the Building Code of Australia for the control of fire spread on interior wall and ceiling linings.</p> <p>The result achieved was: Classification - Group 2 Specific Extinction - Less than 250m²/kg</p>
-------------	--

Lead Time	<ul style="list-style-type: none">• 2-weeks (approx.) from Wednesday, subject to stock availability.• Additional 1-week for Western Australia.• Express delivery is available subject to a surcharge. Contact Baresque for details and pricing.
-----------	---

ZAMBRA

Wallcoverings » Commercial Wallcoverings

Suggested Installation

Reverse hang / overlap and double cut.

Baresque recommends and supply Roman brand adhesives and primers.

Care Instructions

Always use a clean, white, soft cloth.

Use cloth with any of the following in preferred order of use:

1: Clear warm water

2: Mild solution of liquid detergent and warm water

3: Isopropyl Alcohol (a.k.a. rubbing alcohol)

Remove any detergent with a clean, damp cloth. Gently pat dry.

For more difficult stains, dampen a soft white cloth with a solution of household bleach (10% bleach / 90% water). Rub gently.

Rinse with a water dampened cloth to remove bleach concentration.

DO NOT USE solvent based or concentrated abrasive cleaning agents, lacquer thinners, nail polish remover as these may cause discolouration over a period of time.

Always test in an inconspicuous area first. If care instructions don't deliver the expected results, cease cleaning method immediately and contact Baresque for assistance.

Warranty

5-year warranty. Visit baresque.com.au/warranty for complete details.

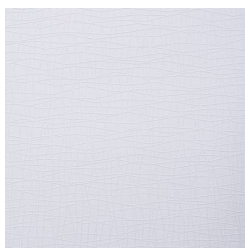
ZAMBRA

Wallcoverings » Commercial Wallcoverings

Colour & Finish Options

COLOURWAY CARD

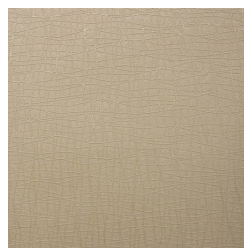
COLOURWAY CARD



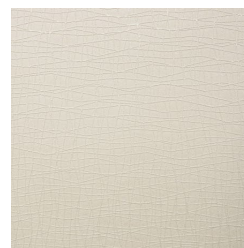
ASL-148000 ICE CUBE



ASL-148082 FRESCO



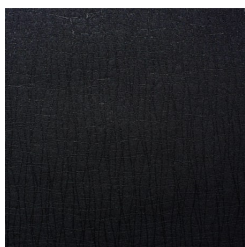
ASL-148112 ARTISAN



ASL-148175
COLONNADE



ASL-148218
EVERGLADES



ASL-148308 GOTH



ASL-148393 INDIGO



ASL-148474 PALISADE



ASL-148506 PORTICO



ASL-148533
TREASURE CHEST



ASL-148547
MAHOGANY



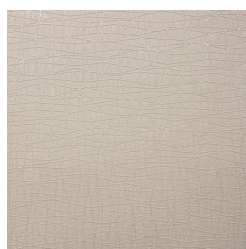
ASL-148559 ZIRCON



ASL-148622
CINNAMON



ASL-148811 TEMPEST



ASL-148840 ANTLER



ASL-148897 CHATEAU