

WITHOUT A PADDLE

Wallcoverings » Commercial Wallcoverings

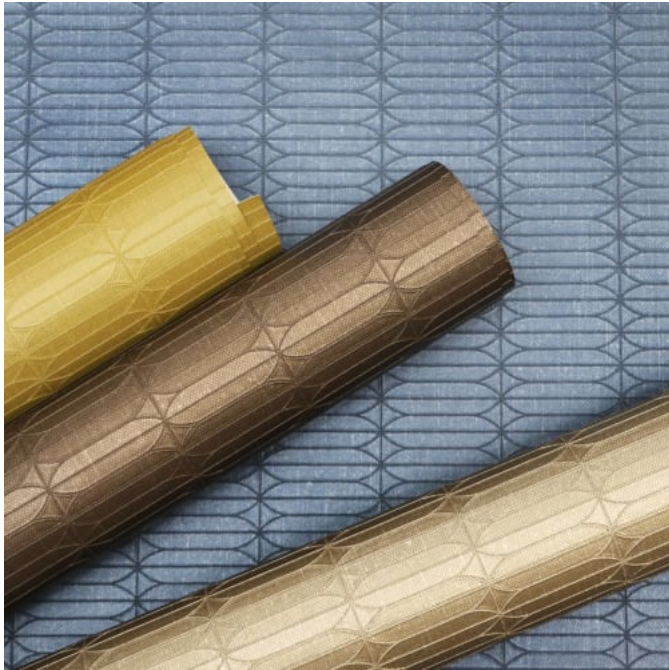


Brand: **York**

Applications: **Walls**

WITHOUT A PADDLE

Wallcoverings » Commercial Wallcoverings



without-a-paddle-promo-2.jpg

WITHOUT A PADDLE

Wallcoverings » Commercial Wallcoverings

Without a Paddle is a 137cm wide commercial wallcovering with a geometric pattern that's available in 9 plain colours. Versatile and easy to clean.

Composition	Fabric. Equivalent to 20oz (452 g/m ²)
Environmental Info	<p>Formaldehyde free</p> <p>Heavy metals free</p> <p>Perfluorooctanoic acid free</p> <p>No solvent inks</p> <p>Low VOC emissions. Any VOCs dissipate quickly (faster than paint) through normal ventilation and have no recognized adverse impact on indoor air quality.</p> <p>Durability means products do not need to be replaced regularly due to wear and tear and being cleanable, vinyl products are ideal for helping keep commercial environments clean of bacteria.</p> <p>Baresque will only deal with vinyl manufacturers that comply with applicable state and federal regulations, provide a factory that is safe and clean for its employees to work in, recycle scrap and inks during the manufacturing process to minimize waste related to production.</p>
Pattern Repeat Size	1.9cm
Roll Size	132/137cm x 27.4m - Available by the lineal metre.
Fire Rating	<p>Tested in accordance with AS ISO 9705 2003 for the purpose of determining the Group Number classification as required by the Building Code of Australia for the control of fire spread on interior wall and ceiling linings.</p> <p>The result achieved was: Classification - Group 2 Specific Extinction - Less than 250m²/kg</p>
Lead Time	<ul style="list-style-type: none">• 2-weeks (approx.) from Wednesday, subject to stock availability.• Additional 1-week for Western Australia.• Express delivery is available subject to a surcharge. Contact Baresque for details and pricing.
Suggested Installation	<p>Reverse hang / overlap and double cut.</p> <p>Baresque recommends and supply Roman brand adhesives and primers.</p>

WITHOUT A PADDLE

Wallcoverings » Commercial Wallcoverings

Care Instructions

Use cloth with any of the following in preferred order of use:

- 1: Clear warm water
- 2: Mild solution of liquid detergent and warm water
- 3: Isopropyl Alcohol (a.k.a. rubbing alcohol)

Remove any detergent with a clean, damp cloth. Gently pat dry.

For more difficult stains, dampen a soft white cloth with a solution of household bleach (10% bleach / 90% water). Rub gently.

Rinse with a water dampened cloth to remove bleach concentration.

Do not use solvent based or concentrated abrasive cleaning agents, lacquer thinners or nail polish remover as these may cause discolouration over a period of time.

Always test in an inconspicuous area first.

If care instructions don't deliver the expected results, cease cleaning method immediately and contact Baresque for assistance.

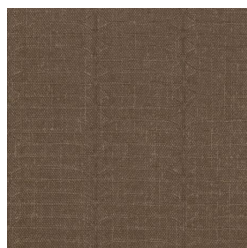
Warranty

5-year warranty. Visit baresque.com.au/warranty for complete details.

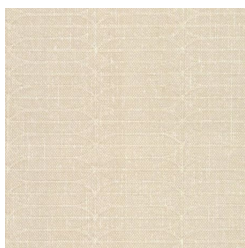
WITHOUT A PADDLE

Wallcoverings » Commercial Wallcoverings

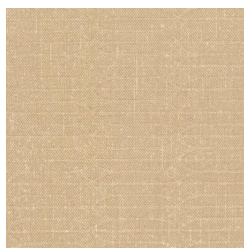
Colour & Finish Options



MDD3255 LOG CABIN



MDD3256 FRESH AIR



MDD3257 SANDY
SHORES



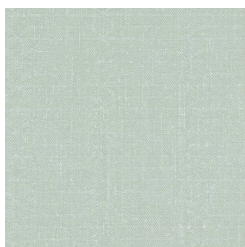
MDD3258 CANTEEN



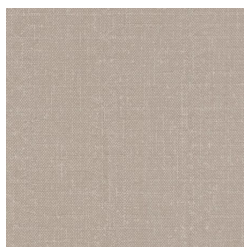
MDD3259 HAPPY
CAMPER



MDD3260 WHITE
RAPIDS



MDD3261 SPRING
WATER



MDD3262 IRON OAR



MDD3263 LAKESIDE