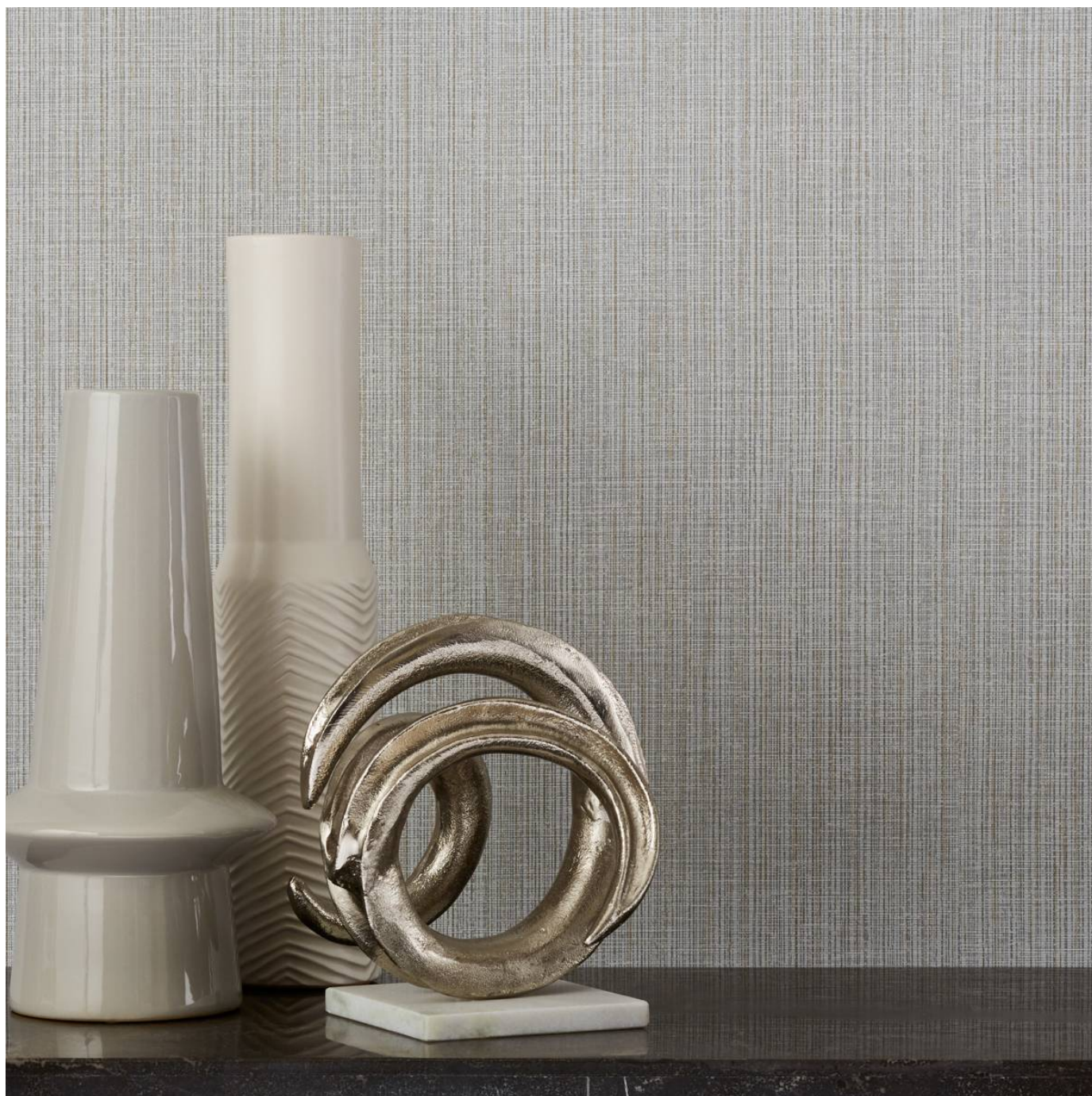


WHAT THE HEMP

Wallcoverings » Commercial Wallcoverings



Brand: **Symphony**

Applications: **Walls**

1300 306 399

info@baresque.com.au

baresque.com.au

1 of 5

WHAT THE HEMP

Wallcoverings » Commercial Wallcoverings

What The Hemp is a 137cm wide commercial wallcovering with a natural texture that's available in 23 colours. Durable, cost effective and easy to clean

✓ **Bleach Cleanable**

| | |
|-------------|---|
| Composition | Vinyl face on a fabric backing 20oz (452 g/m ²) |
|-------------|---|

| | |
|--------------------|--|
| Environmental Info | <p>Formaldehyde free</p> <p>Heavy metals free</p> <p>Perfluorooctanoic acid free</p> <p>No solvent inks</p> <p>Low VOC emissions. Any VOCs dissipate quickly (faster than paint) through normal ventilation and have no recognized adverse impact on indoor air quality.</p> <p>Durability means products do not need to be replaced regularly due to wear and tear and being cleanable, vinyl products are ideal for helping keep commercial environments clean of bacteria.</p> <p>Baresque will only deal with vinyl manufacturers that comply with applicable state and federal regulations, provide a factory that is safe and clean for its employees to work in, recycle scrap and inks during the manufacturing process to minimize waste related to production.</p> |
|--------------------|--|

| | |
|---------------------|-----|
| Pattern Repeat Size | N/A |
|---------------------|-----|

| | |
|-----------|--|
| Roll Size | 137cm wide x 27.4m - Available by the lineal metre |
|-----------|--|

| | |
|-------------|--|
| Fire Rating | <p>Tested in accordance with AS ISO 9705 2003 for the purpose of determining the Group Number classification as required by the Building Code of Australia for the control of fire spread on interior wall and ceiling linings.</p> <p>The result achieved was: Classification - Group 2 Specific Extinction - Less than 250m²/kg</p> |
|-------------|--|

| | |
|-----------|---|
| Lead Time | <ul style="list-style-type: none">• 2-weeks (approx.) from Wednesday, subject to stock availability.• Additional 1-week for Western Australia.• Express delivery is available subject to a surcharge. Contact Baresque for details and pricing. |
|-----------|---|

WHAT THE HEMP

Wallcoverings » Commercial Wallcoverings

Suggested Installation

Reverse hang / overlap and double cut.

Baresque recommends and supply Roman brand adhesives and primers.

Care Instructions

Use cloth with any of the following in preferred order of use:

1: Clear warm water

2: Mild solution of liquid detergent and warm water

3: Isopropyl Alcohol (a.k.a. rubbing alcohol)

Remove any detergent with a clean, damp cloth. Gently pat dry.

For more difficult stains, dampen a soft white cloth with a solution of household bleach (10% bleach / 90% water). Rub gently.

Rinse with a water dampened cloth to remove bleach concentration.

Do not use solvent based or concentrated abrasive cleaning agents, lacquer thinners or nail polish remover as these may cause discolouration over a period of time.

Always test in an inconspicuous area first.

If care instructions don't deliver the expected results, cease cleaning method immediately and contact Baresque for assistance.

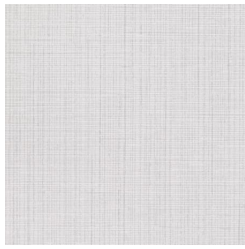
Warranty

5-year warranty. Visit baresque.com.au/warranty for complete details.

WHAT THE HEMP

Wallcoverings » Commercial Wallcoverings

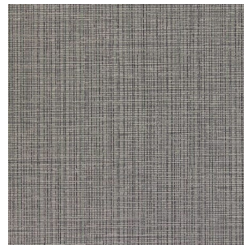
Colour & Finish Options



AZ53275 WHITE
VERTEX



AZ53276 GRAPH
GREY



AZ53277 PEWTER
POINT



AZ53278 BISECT
BLACK



AZ53279 MEDIAN
MALT



AZ53280 DOVE
DEGREE



AZ53281 TAUPE
TANGENT



AZ53282 STONE
SECANT



AZ53283 CONVEX
CREAM



AZ53284 TRIG TAN



AZ53285 SABLE
SEGMENT



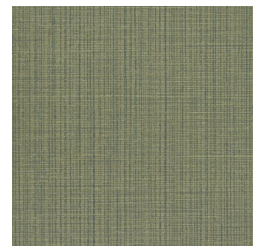
AZ53286 BASE
BROWN



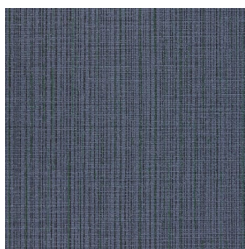
AZ53287 ACUTE
NEUTRAL



AZ53288 LICHEN LINE



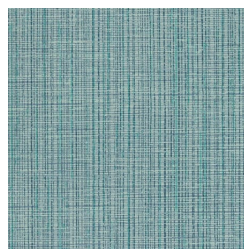
AZ53289 GEO GREEN



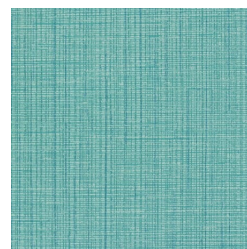
AZ53290 PLANE
NAVY



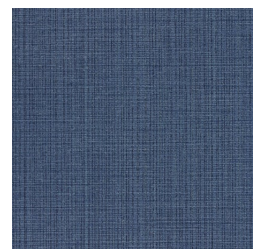
AZ53291 ADJACENT
AQUA



AZ53292 INKY
INVERSE



AZ53293 TURQ
THEOREM



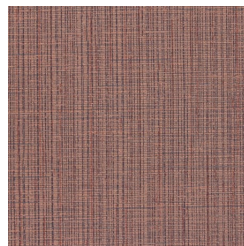
AZ53294 INFINITE
BLUE



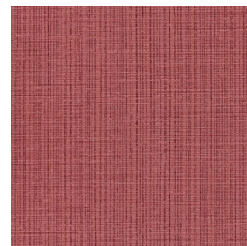
AZ53295 OBLIQUE



AZ53296 POWDER



AZ53297 POLYGON



AZ53298 CEVA'S

1300 306 399

info@baresque.com.au

baresque.com.au

WHAT THE HEMP

Wallcoverings » Commercial Wallcoverings

BLUSH

PROOF

PLUM

SIZZLE

1300 306 399

info@baresque.com.au

baresque.com.au

5 of 5