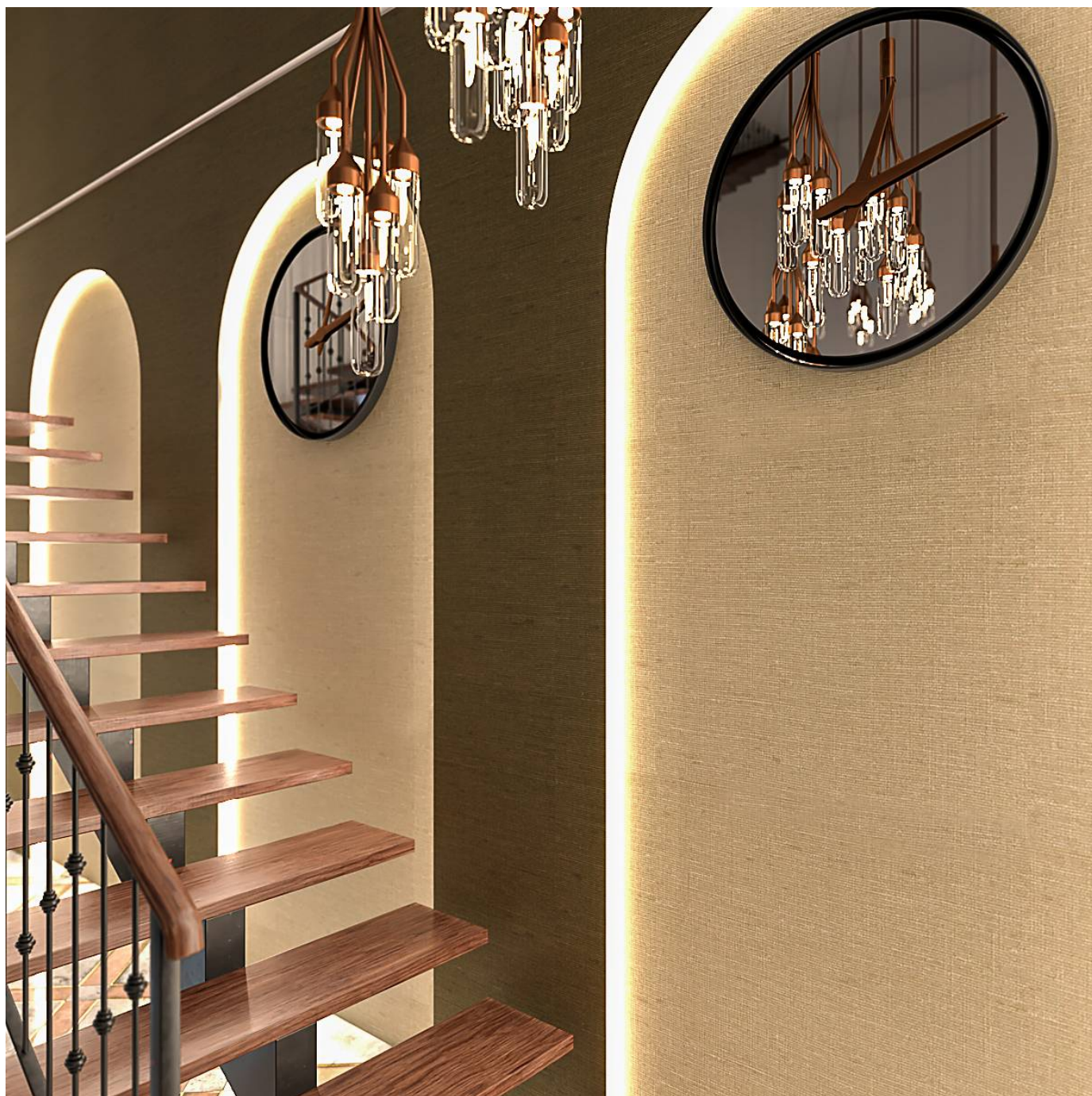


WESTCHESTER

Wallcoverings » Commercial Wallcoverings



Brand: **Versa**

Applications: **Walls**

1300 306 399

info@baresque.com.au

baresque.com.au

1 of 5

WESTCHESTER

Wallcoverings » Commercial Wallcoverings

Westchester is a 137cm wide commercial wallcovering with a tactile granular print displayed in 21 colours. Durable, cost effective and easy to clean.

✓ Bleach Cleanable

Description	A tactile granular print highlighted with a subtle speckling of colour
Composition	Vinyl face on a fabric backing 20oz (452 g/m ²)
Environmental Info	<p>Formaldehyde free</p> <p>Heavy metals free</p> <p>Perfluorooctanoic acid free</p> <p>No solvent inks</p> <p>Low VOC emissions. Any VOCs dissipate quickly (faster than paint) through normal ventilation and have no recognized adverse impact on indoor air quality.</p> <p>Durability means products do not need to be replaced regularly due to wear and tear and being cleanable, vinyl products are ideal for helping keep commercial environments clean of bacteria.</p> <p>Baresque will only deal with vinyl manufacturers that comply with applicable state and federal regulations, provide a factory that is safe and clean for its employees to work in, recycle scrap and inks during the manufacturing process to minimize waste related to production.</p>
Pattern Repeat Size	N/A
Roll Size	137cm wide x 27.4m - Available by the lineal metre
Fire Rating	<p>Tested in accordance with AS ISO 9705 2003 for the purpose of determining the Group Number classification as required by the Building Code of Australia for the control of fire spread on interior wall and ceiling linings.</p> <p>The result achieved was: Classification - Group 2 Specific Extinction - Less than 250m²/kg</p>
Lead Time	<ul style="list-style-type: none">• 2-weeks (approx.) from Wednesday, subject to stock availability.• Additional 1-week for Western Australia.• Express delivery is available subject to a surcharge. Contact Baresque for details and pricing.

WESTCHESTER

Wallcoverings » Commercial Wallcoverings

Suggested Installation

Reverse hang / overlap and double cut.

Baresque recommends and supply Roman brand adhesives and primers.

Care Instructions

Always use a clean, white, soft cloth.

Use cloth with any of the following in preferred order of use:

1: Clear warm water

2: Mild solution of liquid detergent and warm water

3: Isopropyl Alcohol (a.k.a. rubbing alcohol)

Remove any detergent with a clean, damp cloth. Gently pat dry.

For more difficult stains, dampen a soft white cloth with a solution of household bleach (10% bleach / 90% water). Rub gently.

Rinse with a water dampened cloth to remove bleach concentration.

DO NOT USE solvent based or concentrated abrasive cleaning agents, lacquer thinners, nail polish remover as these may cause discolouration over a period of time.

Always test in an inconspicuous area first. If care instructions don't deliver the expected results, cease cleaning method immediately and contact Baresque for assistance.

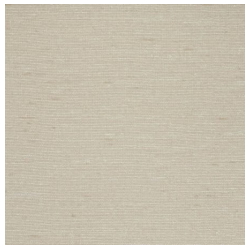
Warranty

5-year warranty. Visit baresque.com.au/warranty for complete details.

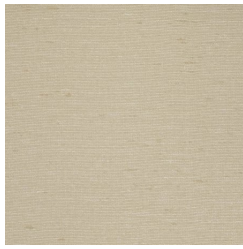
WESTCHESTER

Wallcoverings » Commercial Wallcoverings

Colour & Finish Options



A65-035 WHITE
PLAINS



A65-127 DANBURY
BEIGE



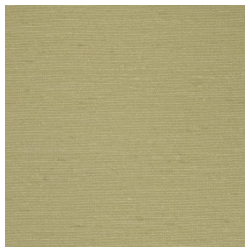
A65-162 HEMPSTEAD



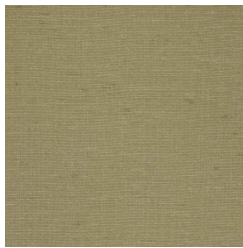
A65-190 LARCHMONT



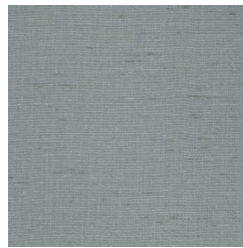
A65-215 GREENWICH



A65-256 HAMPTON



A65-282 PARK VIEW



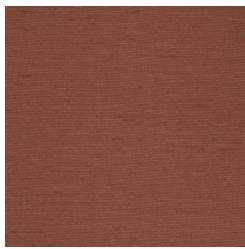
A65-336 OCEANSIDE



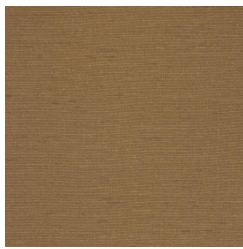
A65-343 WEST
POINTE



A65-433 COPPER WAY



A65-445 MONTROSE



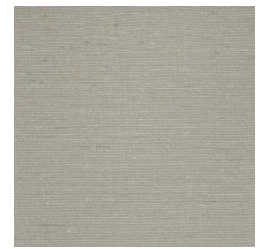
A65-504 AMBER
GRAIN



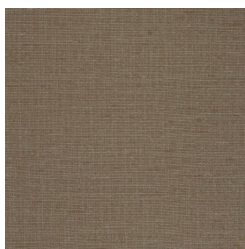
A65-513 BAY SHORE



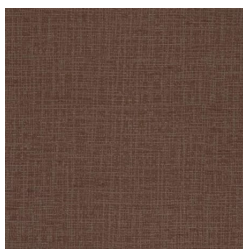
A65-527 SUFFOLK
GREY



A65-567 OYSTER BAY



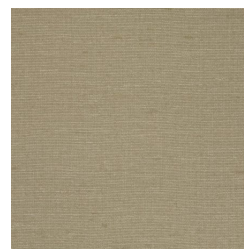
A65-580
BRENTWOOD



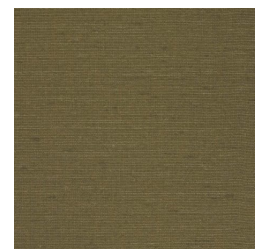
A65-661 BRIDGEPORT
BROWN



A65-684 HARBOR
LIGHTS



A65-801 COVE



A65-849 LODEN



A65-857 SANDS

1300 306 399

info@baresque.com.au

baresque.com.au

WESTCHESTER

Wallcoverings » Commercial Wallcoverings

POINT