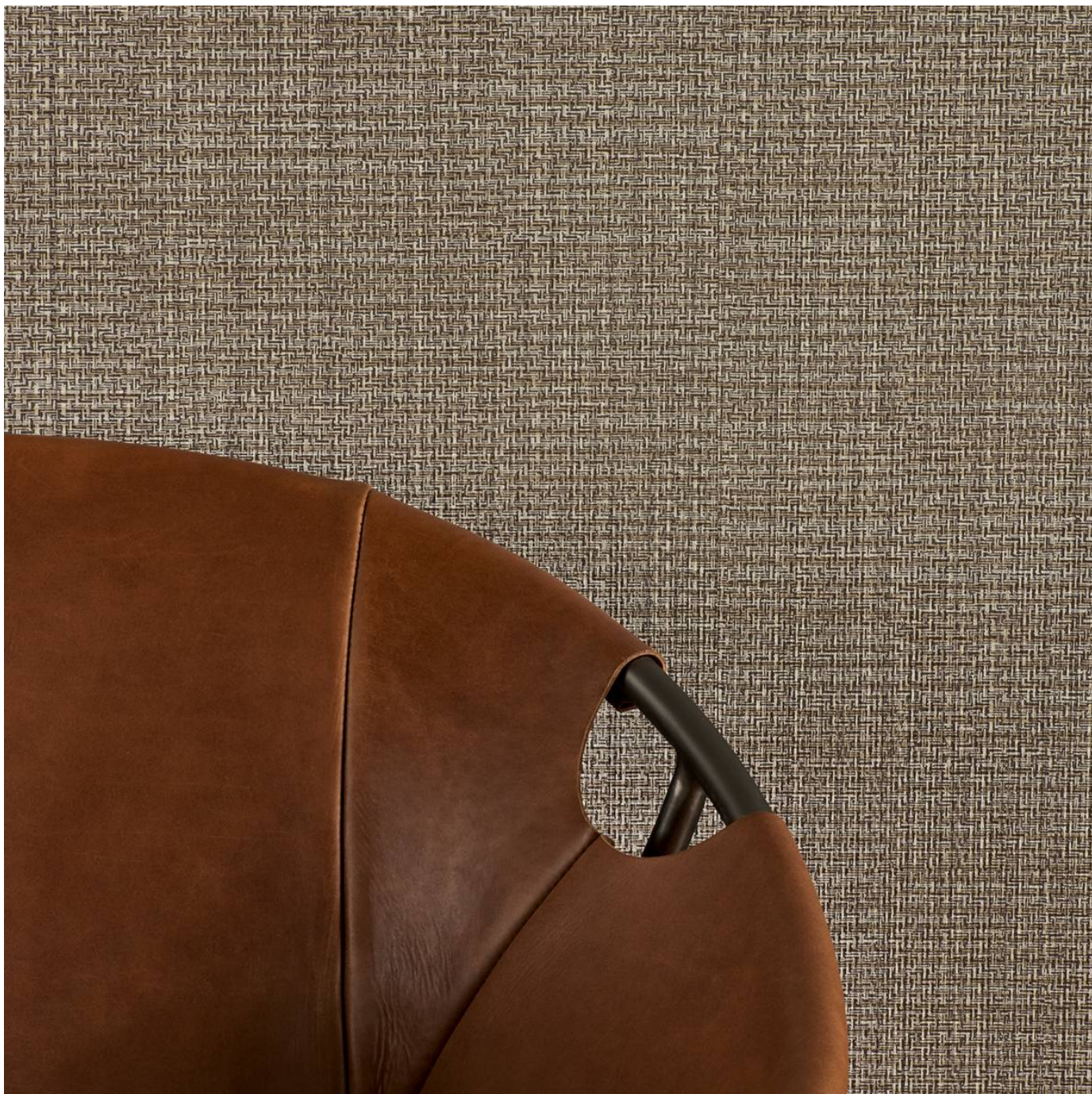


TWISTED TWILL

Wallcoverings » Commercial Wallcoverings



Brand: **Genon**

Applications: **Walls**

1300 306 399

info@baresque.com.au

baresque.com.au

1 of 4

TWISTED TWILL

Wallcoverings » Commercial Wallcoverings

Twisted Twill is a 137cm wide commercial wallcovering with woven look interlock pattern that's available in 18 colourways. Durable and easy to clean.

✓ **Bleach Cleanable**

Composition Vinyl face on a fabric backing 20oz (452 g/m²)

Environmental Info Formaldehyde free

Heavy metals free

Perfluorooctanoic acid free

No solvent inks

Low VOC emissions. Any VOCs dissipate quickly (faster than paint) through normal ventilation and have no recognized adverse impact on indoor air quality.

Durability means products do not need to be replaced regularly due to wear and tear and being cleanable, vinyl products are ideal for helping keep commercial environments clean of bacteria.

Baresque will only deal with vinyl manufacturers that comply with applicable state and federal regulations, provide a factory that is safe and clean for its employees to work in, recycle scrap and inks during the manufacturing process to minimize waste related to production.

Pattern Repeat Size N/A

Roll Size 137cm wide x 27.4m - Available by the lineal metre

Fire Rating Tested in accordance with AS ISO 9705 2003 for the purpose of determining the Group Number classification as required by the Building Code of Australia for the control of fire spread on interior wall and ceiling linings.

The result achieved was:

Classification - Group 2

Specific Extinction - Less than 250m²/kg

Lead Time

- 2-weeks (approx.) from Wednesday, subject to stock availability.
- Additional 1-week for Western Australia.
- Express delivery is available subject to a surcharge. Contact Baresque for details and pricing.

TWISTED TWILL

Wallcoverings » Commercial Wallcoverings

Suggested Installation

Reverse hang / overlap and double cut.

Baresque recommends and supply Roman brand adhesives and primers.

Care Instructions

Use cloth with any of the following in preferred order of use:

1: Clear warm water

2: Mild solution of liquid detergent and warm water

3: Isopropyl Alcohol (a.k.a. rubbing alcohol)

Remove any detergent with a clean, damp cloth. Gently pat dry.

For more difficult stains, dampen a soft white cloth with a solution of household bleach (10% bleach / 90% water). Rub gently.

Rinse with a water dampened cloth to remove bleach concentration.

Do not use solvent based or concentrated abrasive cleaning agents, lacquer thinners or nail polish remover as these may cause discolouration over a period of time.

Always test in an inconspicuous area first.

If care instructions don't deliver the expected results, cease cleaning method immediately and contact Baresque for assistance.

Warranty

5-year warranty. Visit [baresque.com.au/warranty](https://www.baresque.com.au/warranty) for complete details.

TWISTED TWILL

Wallcoverings » Commercial Wallcoverings

Colour & Finish Options



W2-TT-01 COTTON



W2-TT-02 SPICED
CIDER



W2-TT-03 SEPIA



W2-TT-04 MUSLIN



W2-TT-05 GOLDEN



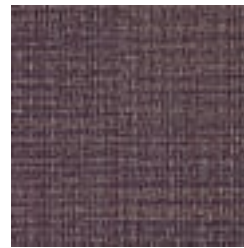
W2-TT-06 BURGUNDY



W2-TT-07 ANTIQUE
CLAY



W2-TT-08 HAZY
TAUPE



W2-TT-09 MULBERRY



W2-TT-10 WOVEN
WHITE



W2-TT-11 TREE BARK



W2-TT-12 TWILIGHT



W2-TT-13 COOL
STONE



W2-TT-14 CINDER



W2-TT-15 RAINY SKY



W2-TT-16 WET MOSS



W2-TT-17 CLOVER



W2-TT-18 PEACOCK