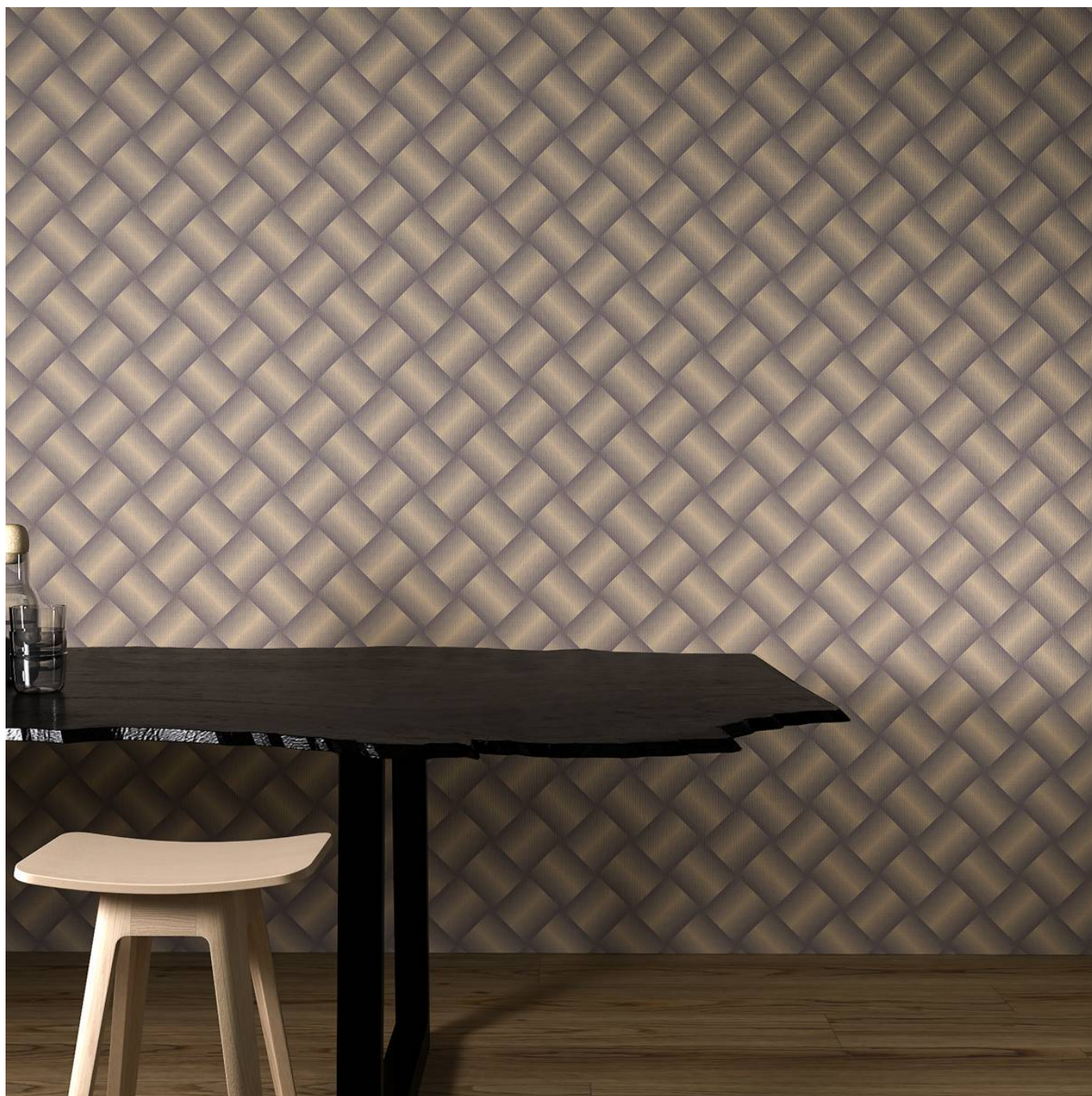


TESSERE

Wallcoverings » Commercial Wallcoverings



Brand: **Koroseal**

Applications: **Walls**

1300 306 399

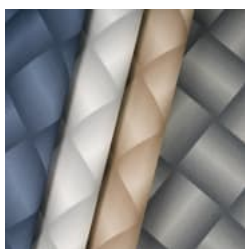
info@baresque.com.au

baresque.com.au

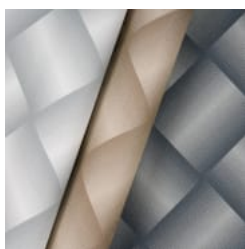
1 of 5

TESSERE

Wallcoverings » Commercial Wallcoverings



tessere_promo_2.jpg



tessere_promo_3.jpg

TESSERE

Wallcoverings » Commercial Wallcoverings

Tessere is a 137cm wide commercial wallcovering with a large-scale diamond pattern with a 3D effect that's available in 13 colourways.

Description	<p>Tessere is an edgy, large-scale weave design with dynamic shade and shadow effects that give the pattern a unique 3D quality. Taking inspiration from architecture and engineering. The colours in the Tessere design range from soft, elegant neutrals to industrial inspired metallics and pops of colour that will add a dimensional appeal</p> <p>Features + Benefits</p> <ul style="list-style-type: none">* Bleach cleanable* 13 Colourways* Highly durable* Anti-microbial* Low VOC
Composition	<p>Vinyl face on a non-woven backing</p>
Environmental Info	<p>Formaldehyde free</p> <p>Heavy metals free</p> <p>Perfluorooctanoic acid free</p> <p>No solvent inks</p> <p>Low VOC emissions. Any VOCs dissipate quickly (faster than paint) through normal ventilation and have no recognized adverse impact on indoor air quality.</p> <p>Durability means products do not need to be replaced regularly due to wear and tear and being cleanable, vinyl products are ideal for helping keep commercial environments clean of bacteria.</p> <p>Baresque will only deal with vinyl manufacturers that comply with applicable state and federal regulations, provide a factory that is safe and clean for its employees to work in, recycle scrap and inks during the manufacturing process to minimize waste related to production.</p>
Pattern Repeat Size	<p>45.7cm V</p>
Roll Size	<p>137cm wide x 27.4m - Available by the lineal metre</p>
Fire Rating	<p>Tested in accordance with AS ISO 9705 2003 for the purpose of determining the Group Number classification as required by the Building Code of Australia for the control of fire spread on interior wall and ceiling linings.</p> <p>The result achieved was:</p> <p>Classification - Group 2</p> <p>Specific Extinction - Less than 250m²/kg</p>

TESSERE

Wallcoverings » Commercial Wallcoverings

Lead Time	<ul style="list-style-type: none">• 2-weeks (approx.) from Wednesday, subject to stock availability.• Additional 1-week for Western Australia.• Express delivery is available subject to a surcharge. Contact Baresque for details and pricing.
-----------	---

Suggested Installation	<p>Reverse hang / overlap and double cut.</p> <p>Baresque recommends and supply Roman brand adhesives and primers.</p>
------------------------	--

Care Instructions	<p>Use cloth with any of the following in preferred order of use:</p> <ol style="list-style-type: none">1: Clear warm water2: Mild solution of liquid detergent and warm water3: Isopropyl Alcohol (a.k.a. rubbing alcohol) <p>Remove any detergent with a clean, damp cloth. Gently pat dry.</p> <p>For more difficult stains, dampen a soft white cloth with a solution of household bleach (10% bleach / 90% water). Rub gently.</p> <p>Rinse with a water dampened cloth to remove bleach concentration.</p> <p>Do not use solvent based or concentrated abrasive cleaning agents, lacquer thinners or nail polish remover as these may cause discolouration over a period of time.</p> <p>Always test in an inconspicuous area first.</p> <p>If care instructions don't deliver the expected results, cease cleaning method immediately and contact Baresque for assistance.</p>
-------------------	---

Warranty	5-year warranty. Visit baresque.com.au/warranty for complete details.
----------	--

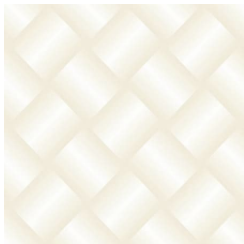
TESSERE

Wallcoverings » Commercial Wallcoverings

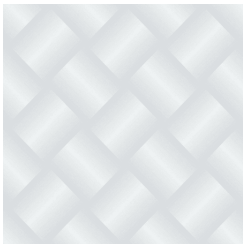
Colour & Finish Options

COLOURWAY CARD

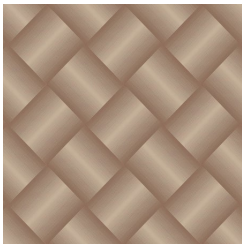
COLOURWAY CARD



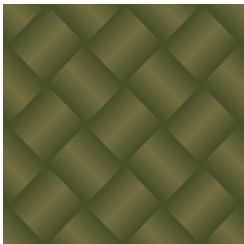
TE21-01 SERENITY



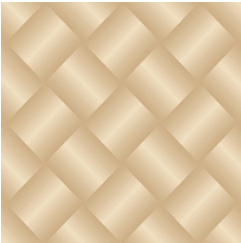
TE21-02 CONTROL



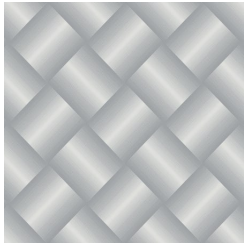
TE21-03 RELIEF



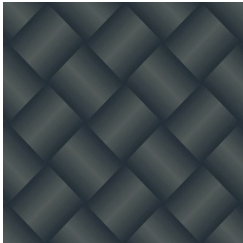
TE21-04 DYNAMIC



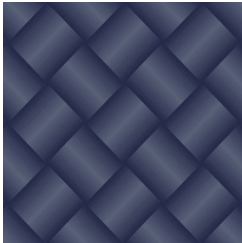
TE21-05 LEVITATE



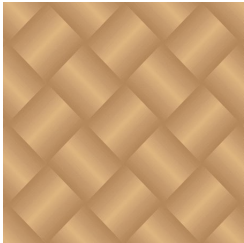
TE21-06 DRIFT



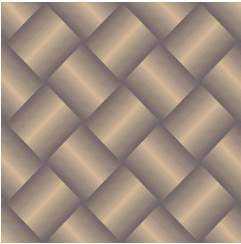
TE21-07 SURGE



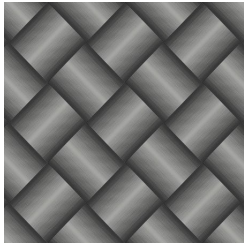
TE21-08 HYPE



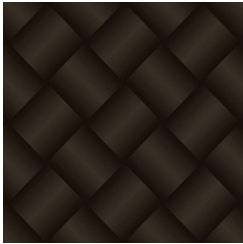
TE21-09 TRANSPOSE



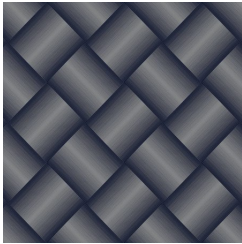
TE21-10 CREATIVE



TE21-11 ELECTRIC



TE21-12 IMPROVISE



TE21-13 MAGNETIC