

# STRIATIONS

Wallcoverings » Commercial Wallcoverings



Brand: **Genon**

Applications: **Walls**

1300 306 399

info@baresque.com.au

**baresque.com.au**

1 of 5

# STRIATIONS

Wallcoverings » Commercial Wallcoverings



striations-promo-2.jpg



striations-promo-3.jpg

# STRIATIONS

Wallcoverings » Commercial Wallcoverings

Striations is a 1237cm wide commercial wallcovering with a striae texture that's available in 18 colourways. Durable, versatile and easy to clean.

✓ **Bleach Cleanable**

**Description** Calm yet sensual texture in a beautiful range of hues

**Composition** Vinyl face on a fabric backing Equivalent to 20oz (452 g/m<sup>2</sup>)

**Environmental Info**

Formaldehyde free

Heavy metals free

Perfluorooctanoic acid free

No solvent inks

Low VOC emissions. Any VOCs dissipate quickly (faster than paint) through normal ventilation and have no recognized adverse impact on indoor air quality.

Durability means products do not need to be replaced regularly due to wear and tear and being cleanable, vinyl products are ideal for helping keep commercial environments clean of bacteria.

Baresque will only deal with vinyl manufacturers that comply with applicable state and federal regulations, provide a factory that is safe and clean for its employees to work in, recycle scrap and inks during the manufacturing process to minimize waste related to production.

**Pattern Repeat Size** N/A

**Roll Size** 137cm wide x 27.4m - Available by the lineal metre

**Fire Rating** Tested in accordance with AS ISO 9705 2003 for the purpose of determining the Group Number classification as required by the Building Code of Australia for the control of fire spread on interior wall and ceiling linings.

The result achieved was:  
Classification - Group 2  
Specific Extinction - Less than 250m<sup>2</sup>/kg

**Lead Time**

- 2-weeks (approx.) from Wednesday, subject to stock availability.
- Additional 1-week for Western Australia.
- Express delivery is available subject to a surcharge. Contact Baresque for details and pricing.

# STRIATIONS

Wallcoverings » Commercial Wallcoverings

---

## Suggested Installation

Reverse hang / overlap and double cut.

Baresque recommends and supply Roman brand adhesives and primers.

---

## Care Instructions

Use cloth with any of the following in preferred order of use:

1: Clear warm water

2: Mild solution of liquid detergent and warm water

3: Isopropyl Alcohol (a.k.a. rubbing alcohol)

Remove any detergent with a clean, damp cloth. Gently pat dry.

For more difficult stains, dampen a soft white cloth with a solution of household bleach (10% bleach / 90% water). Rub gently.

Rinse with a water dampened cloth to remove bleach concentration.

Do not use solvent based or concentrated abrasive cleaning agents, lacquer thinners or nail polish remover as these may cause discolouration over a period of time.

Always test in an inconspicuous area first.

If care instructions don't deliver the expected results, cease cleaning method immediately and contact Baresque for assistance.

---

## Warranty

5-year warranty. Visit [baresque.com.au/warranty](https://baresque.com.au/warranty) for complete details.

---

# STRIATIONS

Wallcoverings » Commercial Wallcoverings

## Colour & Finish Options

### COLOURWAY CARD



W2-SG-01 SNOWCAP



W2-SG-02  
CRYSTALLINE



W2-SG-03 SHORELINE



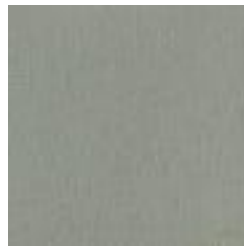
W2-SG-04 NATURAL  
SAND



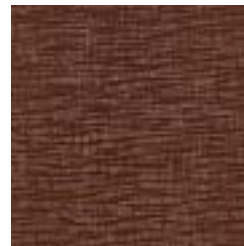
W2-SG-06 SEA VIEW



W2-SG-08 WILLOW  
CREEK



W2-SG-09 RIPPLE  
EFFECT



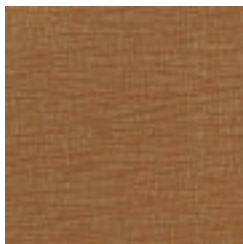
W2-SG-11 BEDROCK



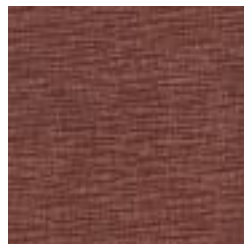
W2-SG-15 GOLDEN  
CHANNEL



W2-SG-16 DESERT  
DUNES



W2-SG-17 EARTHEN  
GROOVE



W2-SG-18 RUSTIC  
PATH



W2-SG-19 MOLTEN  
LAVA



W2-SG-20 OCEAN



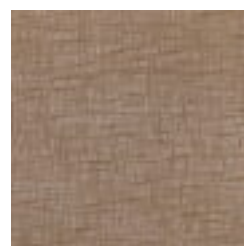
W2-SG-21 STONE



W2-SG-22 FAULT  
GREY



W2-SG-23 MARBLE



W2-SG-24 MINERAL