

# SPIRE XOREL

Wallcoverings » Commercial Wallcoverings

---



Brand: **Xorel**

Applications: **Walls, Upholstery**



# SPIRE XOREL

Wallcoverings » Commercial Wallcoverings

Spire Xorel has multiple applications such as upholstery, wallcovering or wrap panel. It's a dimensional plain design, available in 9 colourways.

- |                                |                                   |                            |
|--------------------------------|-----------------------------------|----------------------------|
| ✓ <b>Bleach Cleanable</b>      | ✓ <b>Environmentally Friendly</b> | ✓ <b>Extended Warranty</b> |
| ✓ <b>High Stain Resistance</b> | ✓ <b>Phthalate Free</b>           | ✓ <b>PVC-Free</b>          |
| ✓ <b>Solution Dyed Yarns</b>   | ✓ <b>Ultra Performance</b>        | ✓ <b>Low VOC</b>           |

## Description

Xorel is a technologically advanced and environmentally sound problem-solving woven textile which enables a wide range of design possibilities to be realized. All the high-performance characteristics of Xorel emanate from the yarn. Simply put, nothing is added to the woven product to enhance performance, no finishes, no coatings.

### FEATURES + BENEFITS:

- \* Bleach cleanable, anti-microbial
- \* 7 Year Warranty
- \* Super durable - 1,000,000 + double rubs
- \* Multi-tasking

Xorel is a registered trademark and license to distribute is granted by permission of Carnegie Fabrics Inc. USA

## How to Specify

1. Colour
  2. Backing - Available Unbacked or with X-Protect Wall, X-Protect Sit or Acrylic backings.
- Check out the Xorel Backings guide on the DOWNLOAD tab.

## Composition

100% Xorel.

60% Biobased content derived from rapidly renewable plant based resources.

Available Unbacked (for wrapped panels) or with X-Protect Wall (for wallcoverings), X-Protect Sit (for upholstery) or acrylic (for wrapped panels with glue) backings.

# SPIRE XOREL

Wallcoverings » Commercial Wallcoverings

## Sustainability

Standards and Certificates:

- Cradle to Cradle Certified Gold
- LEED
- Living Product Certified
- SCS Indoor Advantage Gold
- TUV Austria OK biobased - Level 3 (ASTM D6866)
- USDA Certified Biobased Product

## Environmental Info

Xorel's high performance does not come at an environmental cost as it achieves high standards for sustainability.

All testing/certifying is done by third party independent organizations including:- Scientific Certification Systems (SCS) – Indoor Air Quality (GOLD)- Vincotte – Biobased Content (LEVELS 3/4)- USDA Biobased – Meeting Government Biobased Regulations (PREFERRED)- Cradle to Cradle Institute – Full Lifecycle Assessment (GOLD)- NSF – FACTS certification (NSF 336)

Xorel products can also help a project achieve multiple credits under LEED for commercial interiors:Material Sourcing (Rapidly Renewable Content)Indoor Air Quality (SCS Indoor Advantage Gold)Material Optimization (Cradle to Cradle Gold)Material Transparency (Healthy Product Declaration)

## Roll Size

Unbacked - 142cm

X-Protect Wall - 132cm

X-Protect Sit - 137cm

Acrylic Backed - 137cm x Approx 60m - available by the lineal metre.

MINIMUM ORDER for X-Protect Sit - 5 lineal metres

MINIMUM ORDER for Acrylic Backed - 15 lineal metres

## Weight

550g/m2

## Abrasion

1,000,000 + double rubs Wyzenbeek

# SPIRE XOREL

Wallcoverings » Commercial Wallcoverings

---

## Fire Rating

As a wallcovering - Tested in accordance with AS/NZS 3837 and AS 5637.1:2015 for the purposes of Group Number Classification as specified in the NCC Volume One Specification C1.10 Clause 4

Classification - Group 1

Specific Extinction - Less than 250 m<sup>2</sup>/kg

As a fabric - Tested in accordance with AS1530.3

Spread of Flame Index - 0

Smoke Developed Index - 4

---

## Lead Time

- 5-weeks (approx) from Wednesday subject to stock availability.
  - Additional 1-week for Western Australia.
  - Unbacked 2-3 weeks.
  - Express delivery is available subject to a surcharge. Contact Baresque for details and pricing
- 

## Suggested Installation

As a wallcovering - trim selvedge and butt join.

Download the Installation Instructions for details.

Baresque recommends and supply Roman brand adhesives and primers.

---

# SPIRE XOREL

Wallcoverings » Commercial Wallcoverings

---

## Care Instructions

Xorel yarns are non-absorbent; dust and stains cannot penetrate them.

Regular maintenance will keep the fabric looking new for many years. Periodic vacuuming will remove dust that may settle between the yarns.

Most stains that dry between the yarns or on the surface can be eliminated by wiping the fabric with a cloth moistened with hot tap water. Some stains may require additional treatment. These stains can be cleaned with a variety of water or solvent based cleaners.

When using solvent based cleaners on paperbacked Xorel fabric, test on a small area first. Residue from these cleaners must be removed with hot water and a clean sponge. After cleaning, towel dry.

Hardened solids can be removed with stiff brush or a sharp-edged instrument without damaging the fabric. However, the brush or sharp instrument should not be used close to seams.

Hospital grade disinfectant cleaners can be safely used on Xorel fabrics. Always follow the directions for the specific brand being used as contact times may vary depending on the product. Diluted bleach solution (up to 40%) can also be used on Xorel for disinfecting purposes.

Always test in an inconspicuous area first. If care instructions don't deliver the expected results, cease cleaning method immediately and contact Baresque for assistance.

---

## Warranty

7-year warranty. Visit [baresque.com.au/warranty](https://baresque.com.au/warranty) for complete details.

---

## Additional Comments

Xorel is a multi-tasking material being equally suited as a direct applied wallcovering, wrapped panel material or as an upholstery solution. In addition, it is notable for its versatility in a wide range of projects, wherever both beauty and performance are required.

X Protect Wall prevents stains and other substances from reaching the foam or paper backing.

X Protect Sit increases cushion protection and enhances Xorels superior performance attributes.

With X Protect, Xorel is 100% moisture repellent

---

# SPIRE XOREL

Wallcoverings » Commercial Wallcoverings

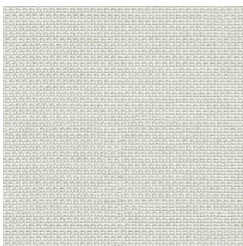
## Colour & Finish Options

### COLOURWAY CARD

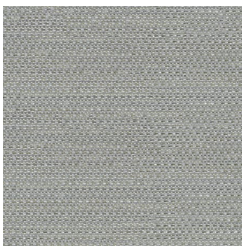
COLOURWAY CARD



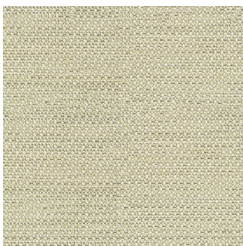
6269 10



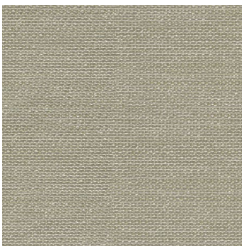
6269 11



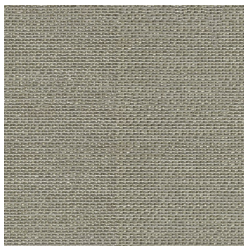
6269 12



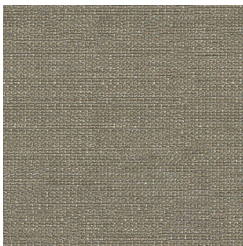
6269 13



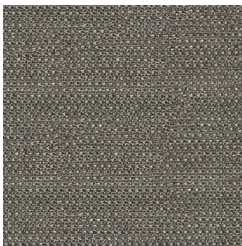
6269 14



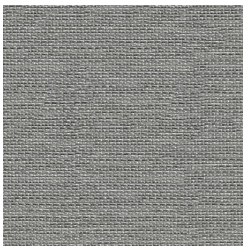
6269 15



6269 16



6269 17



6269 18