

PARALLELO

Wallcoverings » Commercial Wallcoverings



Brand: **Koroseal**

Applications: **Walls**

1300 306 399

info@baresque.com.au

baresque.com.au

1 of 4

PARALLELO

Wallcoverings » Commercial Wallcoverings

Parallelo is a 137cm wide commercial wallcovering with an irregular brick pattern embossed with 3D-engraved rollers. Available in 16 colourways.

Description	<p>Parrallelo has been created with new, state-of-the-art, 3D-engraved embossing rollers. Featuring an innovative, proprietary texture and a clean, fresh colour palette, this design is inspired by fabric texture, geometry and architecture delivering an overall contemporary feel.</p>
Composition	<p>Vinyl face on a fabric backing 750g/m²</p>
Environmental Info	<p>Formaldehyde free</p> <p>Heavy metals free</p> <p>Perfluorooctanoic acid free</p> <p>No solvent inks</p> <p>Low VOC emissions. Any VOCs dissipate quickly (faster than paint) through normal ventilation and have no recognized adverse impact on indoor air quality.</p> <p>Durability means products do not need to be replaced regularly due to wear and tear and being cleanable, vinyl products are ideal for helping keep commercial environments clean of bacteria.</p> <p>Baresque will only deal with vinyl manufacturers that comply with applicable state and federal regulations, provide a factory that is safe and clean for its employees to work in, recycle scrap and inks during the manufacturing process to minimize waste related to production.</p>
Pattern Repeat Size	<p>68.6cm V</p>
Roll Size	<p>137cm wide x 27.4m - Available by the lineal metre</p>
Fire Rating	<p>Tested in accordance with AS ISO 9705 2003 for the purpose of determining the Group Number classification as required by the Building Code of Australia for the control of fire spread on interior wall and ceiling linings.</p> <p>The result achieved was: Classification - Group 2 Specific Extinction - Less than 250m²/kg</p>
Lead Time	<ul style="list-style-type: none">• 2-weeks (approx.) from Wednesday, subject to stock availability.• Additional 1-week for Western Australia.• Express delivery is available subject to a surcharge. Contact Baresque for details and pricing.

PARALLELO

Wallcoverings » Commercial Wallcoverings

Suggested Installation

Non reverse hang/overlap double cut.

Baresque recommends and supplies Roman brand adhesives and primers.

Care Instructions

Use cloth with any of the following in preferred order of use:

1: Clear warm water

2: Mild solution of liquid detergent and warm water

3: Isopropyl Alcohol (a.k.a. rubbing alcohol)

Remove any detergent with a clean, damp cloth. Gently pat dry.

For more difficult stains, dampen a soft white cloth with a solution of household bleach (10% bleach / 90% water). Rub gently.

Rinse with a water dampened cloth to remove bleach concentration.

Do not use solvent based or concentrated abrasive cleaning agents, lacquer thinners or nail polish remover as these may cause discolouration over a period of time.

Always test in an inconspicuous area first.

If care instructions don't deliver the expected results, cease cleaning method immediately and contact Baresque for assistance.

Warranty

5-year warranty. Visit baresque.com.au/warranty for complete details.

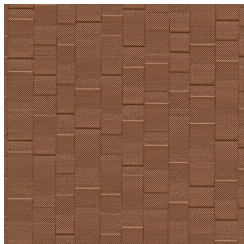
PARALLELO

Wallcoverings » Commercial Wallcoverings

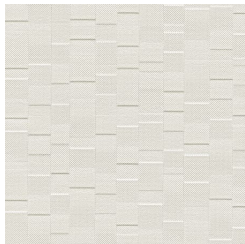
Colour & Finish Options

COLOURWAY CARD

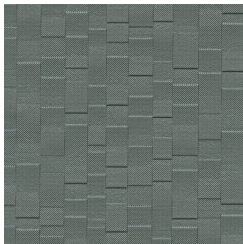
COLOURWAY CARD



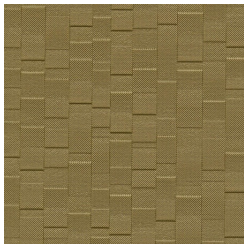
PRL1-01 EARTHEN



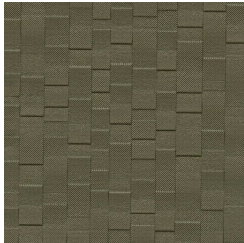
PRL1-02 HARMONY



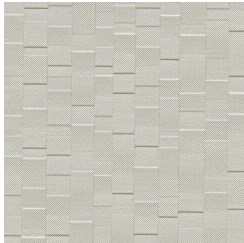
PRL1-03 MIRAGE



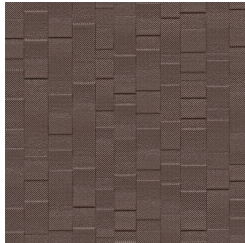
PRL1-04 BRILLIANCE



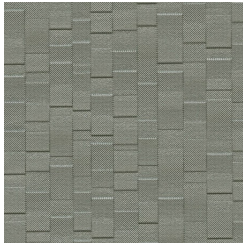
PRL1-05 FOUNDATION



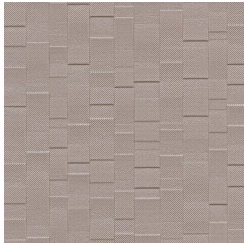
PRL1-06 OBSCURED



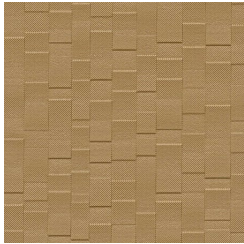
PRL1-07 ASSERTIVE



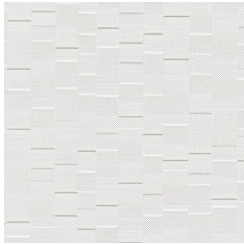
PRL1-08 GRAVITY



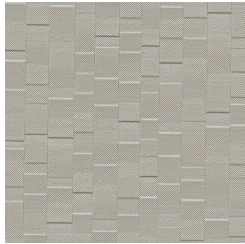
PRL1-09 WISTFUL



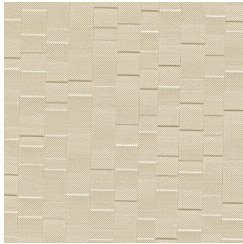
PRL1-10 ANCESTRAL



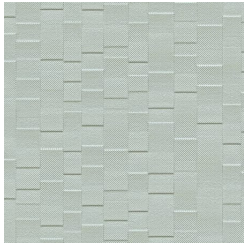
PRL1-11 OPTIMISM



PRL1-12 REVEALED



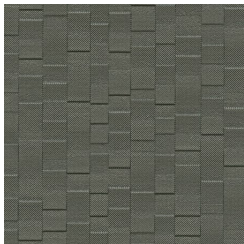
PRL1-13 PARCHMENT



PRL1-14
INCANDESCENT



PRL1-15 ELUSIVE



PRL1-16 SILHOUTTE