

OCEAN DRIVE

Wallcoverings » Commercial Wallcoverings



Brand: **Versa**

Applications: **Walls**

1300 306 399

info@baresque.com.au

baresque.com.au

1 of 4

OCEAN DRIVE

Wallcoverings » Commercial Wallcoverings

Ocean Drive is a 137cm wide commercial wallcovering with an art deco motif displayed in 12 colourways. It's durable, versatile and easy to clean.

✓ **Bleach Cleanable**

Description A classic motif inspired by Art Deco design and named for the famous street of historic hotels in Miami Beach, Ocean Drive is a mid-scale geometric pattern usable for many spaces. Bold and graphic in several dynamic colour combos of blues and greens, or subtle in tonal shades of neutrals, Ocean Drive will fit into all types of interiors.

Composition Vinyl face on a non-woven backing Equivalent to 20oz (452g/m²)

Environmental Info

Formaldehyde free

Heavy metals free

Perfluorooctanoic acid free

No solvent inks

Low VOC emissions. Any VOCs dissipate quickly (faster than paint) through normal ventilation and have no recognized adverse impact on indoor air quality.

Durability means products do not need to be replaced regularly due to wear and tear and being cleanable, vinyl products are ideal for helping keep commercial environments clean of bacteria.

Baresque will only deal with vinyl manufacturers that comply with applicable state and federal regulations, provide a factory that is safe and clean for its employees to work in, recycle scrap and inks during the manufacturing process to minimize waste related to production.

Pattern Repeat Size 17cm V / 25cm H

Roll Size 137cm wide x 27.4m - Available by the lineal metre

Fire Rating

Tested in accordance with AS ISO 9705 2003 for the purpose of determining the Group Number classification as required by the Building Code of Australia for the control of fire spread on interior wall and ceiling linings.

The result achieved was:
Classification - Group 2
Specific Extinction - Less than 250m²/kg

OCEAN DRIVE

Wallcoverings » Commercial Wallcoverings

| | |
|-----------|---|
| Lead Time | <ul style="list-style-type: none">• 2-weeks (approx.) from Wednesday, subject to stock availability.• Additional 1-week for Western Australia.• Express delivery is available subject to a surcharge. Contact Baresque for details and pricing. |
|-----------|---|

| | |
|------------------------|--|
| Suggested Installation | <p>Reverse hang / overlap and double cut.</p> <p>Baresque recommends and supply Roman brand adhesives and primers.</p> |
|------------------------|--|

| | |
|-------------------|--|
| Care Instructions | <p>Always use a clean, white, soft cloth.</p> <p>Use cloth with any of the following in preferred order of use:</p> <ol style="list-style-type: none">1: Clear warm water2: Mild solution of liquid detergent and warm water3: Isopropyl Alcohol (a.k.a. rubbing alcohol) <p>Remove any detergent with a clean, damp cloth. Gently pat dry.</p> <p>For more difficult stains, dampen a soft white cloth with a solution of household bleach (10% bleach / 90% water). Rub gently.</p> <p>Rinse with a water dampened cloth to remove bleach concentration.</p> <p>DO NOT USE solvent based or concentrated abrasive cleaning agents, lacquer thinners, nail polish remover as these may cause discolouration over a period of time.</p> <p>Always test in an inconspicuous area first. If care instructions don't deliver the expected results, cease cleaning method immediately and contact Baresque for assistance.</p> |
|-------------------|--|

| | |
|----------|--|
| Warranty | 5-year warranty. Visit baresque.com.au/warranty for complete details. |
|----------|--|

OCEAN DRIVE

Wallcoverings » Commercial Wallcoverings

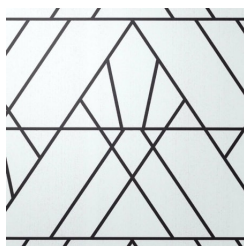
Colour & Finish Options

COLOURWAY CARD

COLOURWAY CARD



A191-001 CAVALIER



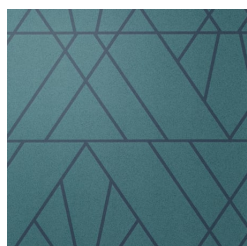
A191-007 VAN ALEN



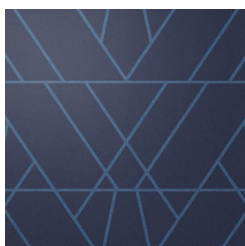
A191-111 ADLER



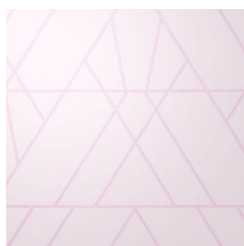
A191-134 ESSEX



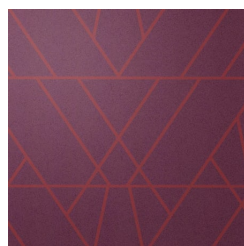
A191-227 CELINO



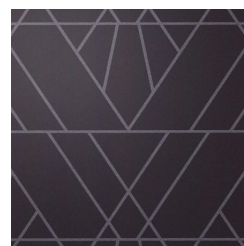
A191-321 CARLYLE



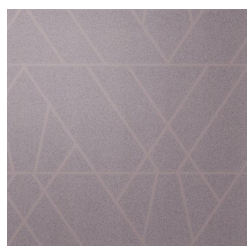
A191-401 ESPIRIT



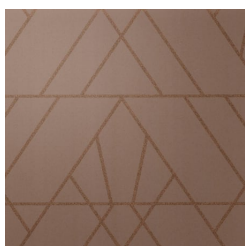
A191-478 CASSANDRE



A191-502 GATSBY



A191-540 MIRAGE



A191-546 EL REY



A191-577 DELANO