

MERINO

Wallcoverings » Commercial Wallcoverings



Brand: **Genon**

Applications: **Walls**

1300 306 399

info@baresque.com.au

baresque.com.au

1 of 5

MERINO

Wallcoverings » Commercial Wallcoverings

Merino is a 137cm wide commercial wallcovering layered with a rich fabric-look that's available in 24 colourways. Versatile, durable and easy to clean

✓ Bleach Cleanable

Description	Layered, rich fabric looks in an indulgent colour range
Composition	Vinyl face on a fabric backing Equivalent to 20oz (452 g/m ²)
Environmental Info	<p>Formaldehyde free</p> <p>Heavy metals free</p> <p>Perfluorooctanoic acid free</p> <p>No solvent inks</p> <p>Low VOC emissions. Any VOCs dissipate quickly (faster than paint) through normal ventilation and have no recognized adverse impact on indoor air quality.</p> <p>Durability means products do not need to be replaced regularly due to wear and tear and being cleanable, vinyl products are ideal for helping keep commercial environments clean of bacteria.</p> <p>Baresque will only deal with vinyl manufacturers that comply with applicable state and federal regulations, provide a factory that is safe and clean for its employees to work in, recycle scrap and inks during the manufacturing process to minimize waste related to production.</p>
Pattern Repeat Size	N/A
Roll Size	137cm wide x 27.4m - Available by the lineal metre
Fire Rating	<p>Tested in accordance with AS ISO 9705 2003 for the purpose of determining the Group Number classification as required by the Building Code of Australia for the control of fire spread on interior wall and ceiling linings.</p> <p>The result achieved was: Classification - Group 2 Specific Extinction - Less than 250m²/kg</p>
Lead Time	<ul style="list-style-type: none">• 2-weeks (approx.) from Wednesday, subject to stock availability.• Additional 1-week for Western Australia.• Express delivery is available subject to a surcharge. Contact Baresque for details and pricing.

MERINO

Wallcoverings » Commercial Wallcoverings

Suggested Installation

Reverse hang / overlap and double cut.

Baresque recommends and supply Roman brand adhesives and primers.

Care Instructions

Use cloth with any of the following in preferred order of use:

1: Clear warm water

2: Mild solution of liquid detergent and warm water

3: Isopropyl Alcohol (a.k.a. rubbing alcohol)

Remove any detergent with a clean, damp cloth. Gently pat dry.

For more difficult stains, dampen a soft white cloth with a solution of household bleach (10% bleach / 90% water). Rub gently.

Rinse with a water dampened cloth to remove bleach concentration.

Do not use solvent based or concentrated abrasive cleaning agents, lacquer thinners or nail polish remover as these may cause discolouration over a period of time.

Always test in an inconspicuous area first.

If care instructions don't deliver the expected results, cease cleaning method immediately and contact Baresque for assistance.

Warranty

5-year warranty. Visit baresque.com.au/warranty for complete details.

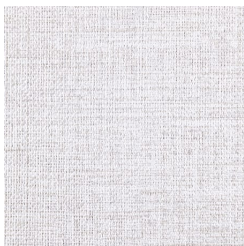
MERINO

Wallcoverings » Commercial Wallcoverings

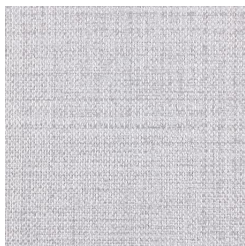
Colour & Finish Options

COLOURWAY CARD

COLOURWAY CARD



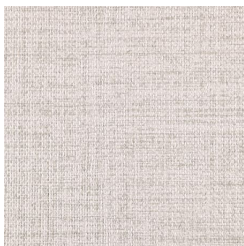
W2-ME-04 LAMB



W2-ME-05 SILVER
SHEEP



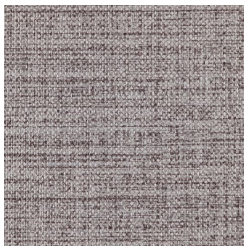
W2-ME-06 BLACK
RAM



W2-ME-07 BIRCH



W2-ME-08 CASHMERE



W2-ME-09 GREY
GOAT



W2-ME-10 WINTER
WOOL



W2-ME-11 GOLD
TWEED



W2-ME-12 NEIL'S
BROWN



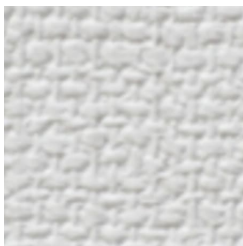
W2-ME-13 ECRU SUE



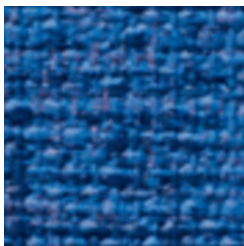
W2-ME-15 BRONZE
KNIT



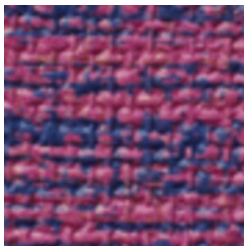
W2-ME-18 BRASS
WEAVE



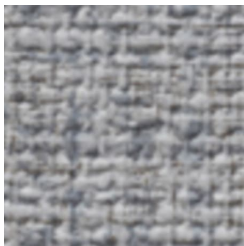
W2-ME-19 PURE
WHITE



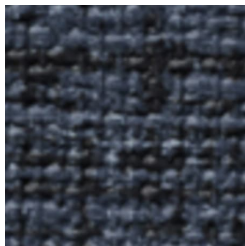
W2-ME-20 ELECTRIC



W2-ME-21 BERRY
STITCH



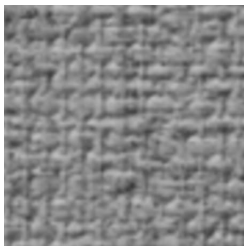
W2-ME-22 JEAN
JACKET



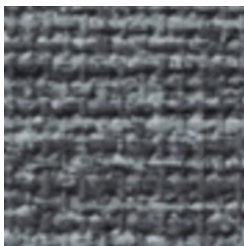
W2-ME-23 NAVY
NIGHT



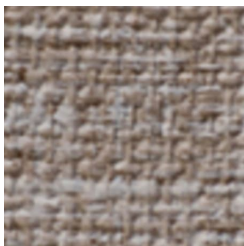
W2-ME-24 HAZY



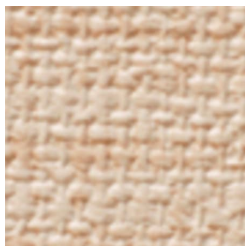
W2-ME-25
MOONSTONE



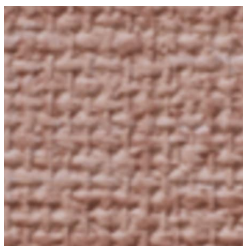
W2-ME-26 SLATE



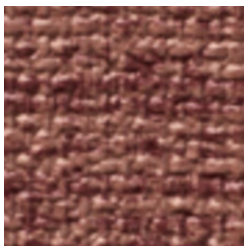
W2-ME-27 WARM



W2-ME-28 BALLET



W2-ME-29 MAGNOLIA



W2-ME-30 RUBY ROSE

MERINO

Wallcoverings » Commercial Wallcoverings

TAUPE

SLIPPER