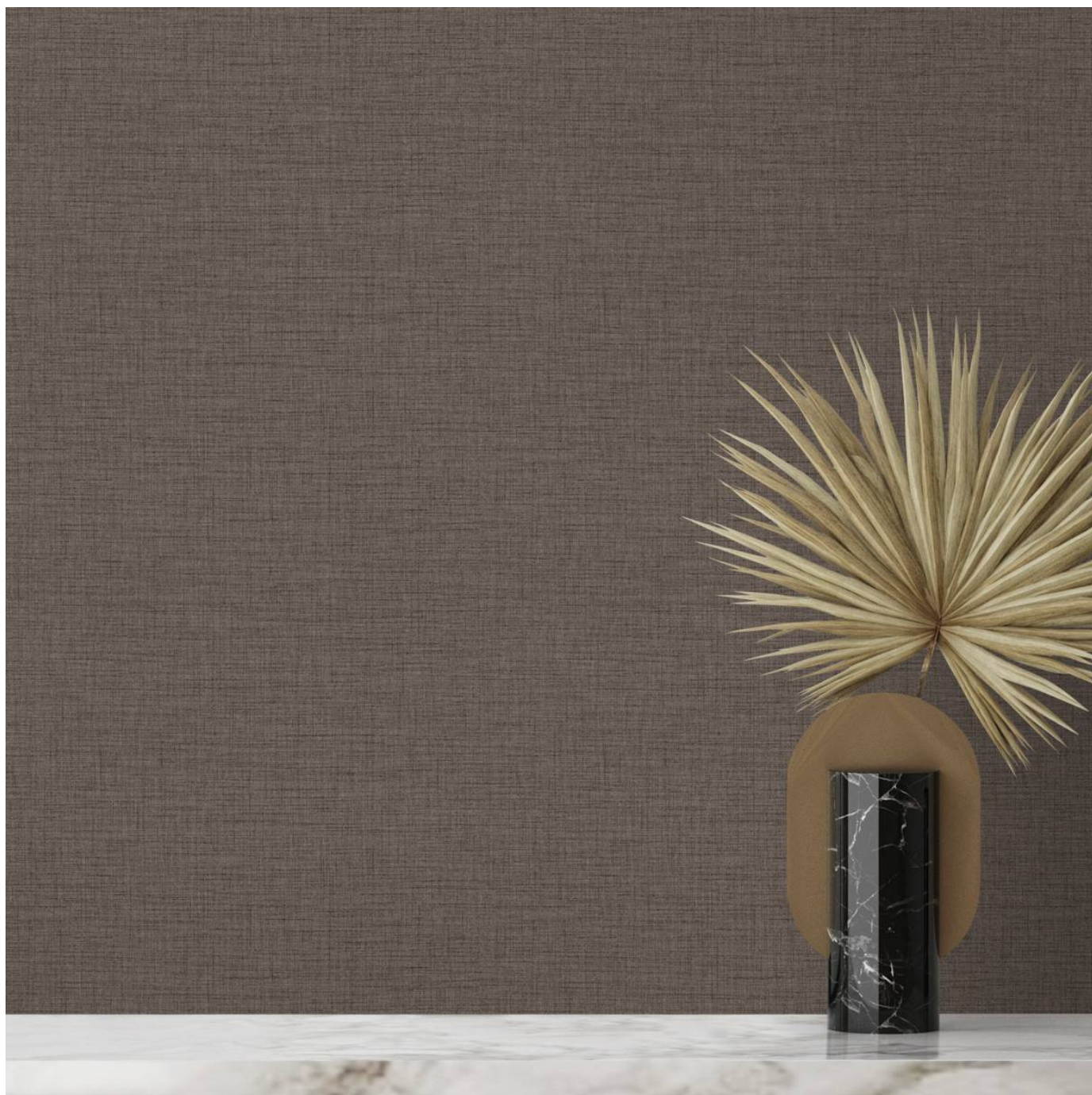


MARKET STREET

Wallcoverings » Commercial Wallcoverings



Brand: **Koroseal**

Collections: **Stacy Garcia New York**

Applications: **Walls**

1300 306 399

info@baresque.com.au

baresque.com.au

1 of 6

MARKET STREET

Wallcoverings » Commercial Wallcoverings



market-street-promo-2.jpg



market-street-promo-3.jpg



market-street-promo-4.jpg



market-street-promo-5.jpg

MARKET STREET

Wallcoverings » Commercial Wallcoverings

Market Street is a 137cm wide wallcovering with a multi-coloured sober pattern displayed in 20 colours. Highly durable, low VOC and bleach cleanable.

Description

The multi-coloured pattern Market Street is inspired by one of the world's largest fashion capitals, New York. Offering emphasizes the magic amidst the madness in a city brimming with opportunity.

Weaving a story from the runway to the walls, designed to capture the essence of a woven fabric into a versatile wallcovering. The design consists of 20 versatile colorways.

Features + Benefits

- * Bleach cleanable
- * 20 Colourways
- * Highly durable
- * Anti-microbial
- * Low VOC

Composition

Vinyl face on a non-woven backing

Environmental Info

Formaldehyde free

Heavy metals free

Perfluorooctanoic acid free

No solvent inks

Low VOC emissions. Any VOCs dissipate quickly (faster than paint) through normal ventilation and have no recognized adverse impact on indoor air quality.

Durability means products do not need to be replaced regularly due to wear and tear and being cleanable, vinyl products are ideal for helping keep commercial environments clean of bacteria.

Baresque will only deal with vinyl manufacturers that comply with applicable state and federal regulations, provide a factory that is safe and clean for its employees to work in, recycle scrap and inks during the manufacturing process to minimize waste related to production.

Pattern Repeat Size

N/A

Roll Size

137cm wide x 27.4m - Available by the lineal metre

MARKET STREET

Wallcoverings » Commercial Wallcoverings

Fire Rating Tested in accordance with AS ISO 9705 2003 for the purpose of determining the Group Number classification as required by the Building Code of Australia for the control of fire spread on interior wall and ceiling linings.

The result achieved was:
Classification - Group 2
Specific Extinction - Less than 250m²/kg

Lead Time

- 2-weeks (approx.) from Wednesday, subject to stock availability.
- Additional 1-week for Western Australia.
- Express delivery is available subject to a surcharge. Contact Baresque for details and pricing.

Suggested Installation Reverse hang / overlap and double cut.
Baresque recommends and supply Roman brand adhesives and primers.

Care Instructions Use cloth with any of the following in preferred order of use:

- 1: Clear warm water
- 2: Mild solution of liquid detergent and warm water
- 3: Isopropyl Alcohol (a.k.a. rubbing alcohol)

Remove any detergent with a clean, damp cloth. Gently pat dry.

For more difficult stains, dampen a soft white cloth with a solution of household bleach (10% bleach / 90% water). Rub gently.

Rinse with a water dampened cloth to remove bleach concentration.

Do not use solvent based or concentrated abrasive cleaning agents, lacquer thinners or nail polish remover as these may cause discolouration over a period of time.

Always test in an inconspicuous area first.

If care instructions don't deliver the expected results, cease cleaning method immediately and contact Baresque for assistance.

Warranty 5-year warranty. Visit [baresque.com.au/warranty](https://www.baresque.com.au/warranty) for complete details.

MARKET STREET

Wallcoverings » Commercial Wallcoverings

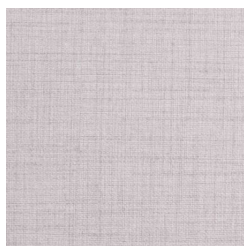
Colour & Finish Options

COLOURWAY CARD

COLOURWAY CARD



SG04-01 WOOL



SG04-02 LACE



SG04-03 CASHMERE



SG04-04 LEMON
TWEED



SG04-05 BLUE
TAFFETA



SG04-06 LINEN



SG04-07 CHIFFON



SG04-08 SILVER
SATIN



SG04-09 NATURAL
LEATHER



SG04-10 DAPPER
DENIM



SG04-11 BAMBOO



SG04-12 JUTE



SG04-13 GREY
GABARDINE



SG04-14 NUBUCK



SG04-15 TUXEDO



SG04-16 BRONZE
BOUCLE



SG04-17 COTTON



SG04-18 CHARMEUSE



SG04-19 SAGE SUEDE



SG04-20 BLAZER

1300 306 399

info@baresque.com.au

baresque.com.au

MARKET STREET

Wallcoverings » Commercial Wallcoverings
