

KIMONO II

Wallcoverings » Commercial Wallcoverings



Brand: **Koroseal**

Applications: **Walls**

1300 306 399

info@baresque.com.au

baresque.com.au

1 of 4

KIMONO II

Wallcoverings » Commercial Wallcoverings

Kimono II is a 137cm wide commercial wallcovering with a horizontal design and soft texture that's available in 21 colourways. Versatile and durable.

✓ **Bleach Cleanable**

Description	Inspired by the silk used in Japanese Kimonos, Kimono II is a horizontal design evoking luxury and warmth with its smooth, soft texture. Kimono II is offered in contemporary colours with added slub texture for dimension and interest. Be sure to check out coordinating Calliope.
Composition	Vinyl face on a fabric backing Equivalent to 20oz (452g/m ²)
Environmental Info	<p>Formaldehyde free</p> <p>Heavy metals free</p> <p>Perfluorooctanoic acid free</p> <p>No solvent inks</p> <p>Low VOC emissions. Any VOCs dissipate quickly (faster than paint) through normal ventilation and have no recognized adverse impact on indoor air quality.</p> <p>Durability means products do not need to be replaced regularly due to wear and tear and being cleanable, vinyl products are ideal for helping keep commercial environments clean of bacteria.</p> <p>Baresque will only deal with vinyl manufacturers that comply with applicable state and federal regulations, provide a factory that is safe and clean for its employees to work in, recycle scrap and inks during the manufacturing process to minimize waste related to production.</p>
Weight	Equivalent to 20oz (452g/m ²)
Fire Rating	<p>Tested in accordance with AS ISO 9705 2003 for the purpose of determining the Group Number classification as required by the Building Code of Australia for the control of fire spread on interior wall and ceiling linings.</p> <p>The result achieved was: Classification - Group 2 Specific Extinction - Less than 250m²/kg</p>
Lead Time	<ul style="list-style-type: none">• 2-weeks (approx.) from Wednesday, subject to stock availability.• Additional 1-week for Western Australia.• Express delivery is available subject to a surcharge. Contact Baresque for details and pricing.

KIMONO II

Wallcoverings » Commercial Wallcoverings

Suggested Installation

Reverse hang / overlap and double cut.

Baresque recommends and supply Roman brand adhesives and primers.

Care Instructions

Use cloth with any of the following in preferred order of use:

1: Clear warm water

2: Mild solution of liquid detergent and warm water

3: Isopropyl Alcohol (a.k.a. rubbing alcohol)

Remove any detergent with a clean, damp cloth. Gently pat dry.

For more difficult stains, dampen a soft white cloth with a solution of household bleach (10% bleach / 90% water). Rub gently.

Rinse with a water dampened cloth to remove bleach concentration.

Do not use solvent based or concentrated abrasive cleaning agents, lacquer thinners or nail polish remover as these may cause discolouration over a period of time.

Always test in an inconspicuous area first.

If care instructions don't deliver the expected results, cease cleaning method immediately and contact Baresque for assistance.

Warranty

5-year warranty. Visit baresque.com.au/warranty for complete details.

KIMONO II

Wallcoverings » Commercial Wallcoverings

Colour & Finish Options

COLOURWAY CARD

COLOURWAY CARD



K722-01 CLOUD



K722-02 MOONLIGHT



K722-03 ALABASTER



K722-04 PETAL



K722-05 LILAC



K722-06 BROCADE



K722-07 PUTTY



K722-08 DESERT



K722-09 GOLD



K722-11 SKY



K722-12 LEAF



K722-13 PLUM



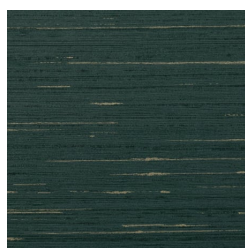
K722-14 SILVER



K722-15 ONYX



K722-16 STONE



K722-17 PEACOCK



K722-18 DOVE



K722-19 DUNE



K722-20 MIST



K722-21 INDIGO



K722-28 CHINA SILK