

ITHACA

Wallcoverings » Commercial Wallcoverings



Brand: **Versa**

Applications: **Walls**

1300 306 399

info@baresque.com.au

baresque.com.au

1 of 4

ITHACA

Wallcoverings » Commercial Wallcoverings

Ithaca is a 137cm wide commercial wallcovering that's visually three-dimensional and aesthetically realistic. Available in 16 colourways.

✓ Bleach Cleanable

Description	Ithaca is a contemporary layered modern weave. Visually three-dimensional and aesthetically realistic, Ithaca is a large scale textile look.
Composition	Vinyl face on a fabric backing Equivalent to 20oz (452g/m ²)
Environmental Info	<p>Formaldehyde free</p> <p>Heavy metals free</p> <p>Perfluorooctanoic acid free</p> <p>No solvent inks</p> <p>Low VOC emissions. Any VOCs dissipate quickly (faster than paint) through normal ventilation and have no recognized adverse impact on indoor air quality.</p> <p>Durability means products do not need to be replaced regularly due to wear and tear and being cleanable, vinyl products are ideal for helping keep commercial environments clean of bacteria.</p> <p>Baresque will only deal with vinyl manufacturers that comply with applicable state and federal regulations, provide a factory that is safe and clean for its employees to work in, recycle scrap and inks during the manufacturing process to minimize waste related to production.</p>
Pattern Repeat Size	N/A
Roll Size	137cm wide x 27.4m - Available by the lineal metre
Fire Rating	<p>Tested in accordance with AS ISO 9705 2003 for the purpose of determining the Group Number classification as required by the Building Code of Australia for the control of fire spread on interior wall and ceiling linings.</p> <p>The result achieved was: Classification - Group 2 Specific Extinction - Less than 250m²/kg</p>
Lead Time	<ul style="list-style-type: none">• 2-weeks (approx.) from Wednesday, subject to stock availability.• Additional 1-week for Western Australia.• Express delivery is available subject to a surcharge. Contact Baresque for details and pricing.

ITHACA

Wallcoverings » Commercial Wallcoverings

Suggested Installation

Reverse hang / overlap and double cut.

Baresque recommends and supply Roman brand adhesives and primers.

Care Instructions

Always use a clean, white, soft cloth.

Use cloth with any of the following in preferred order of use:

1: Clear warm water

2: Mild solution of liquid detergent and warm water

3: Isopropyl Alcohol (a.k.a. rubbing alcohol)

Remove any detergent with a clean, damp cloth. Gently pat dry.

For more difficult stains, dampen a soft white cloth with a solution of household bleach (10% bleach / 90% water). Rub gently.

Rinse with a water dampened cloth to remove bleach concentration.

DO NOT USE solvent based or concentrated abrasive cleaning agents, lacquer thinners, nail polish remover as these may cause discolouration over a period of time.

Always test in an inconspicuous area first. If care instructions don't deliver the expected results, cease cleaning method immediately and contact Baresque for assistance.

Warranty

5-year warranty. Visit baresque.com.au/warranty for complete details.

Colour & Finish Options

COLOURWAY CARD

COLOURWAY CARD



A183-007 BAY EAST



A183-061 HANAIEI



A183-128 CENERE



A183-182 NATURAL



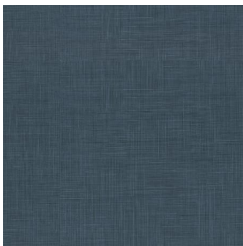
A183-190 SAND
DOLLAR



A183-301
PEPPERMINT



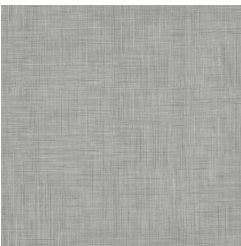
A183-302 GOTHIC



A183-324 INLAND SEA



A183-466 BUTTER
RUM



A183-500
SILVERWORKS



A183-507 CABA



A183-511
HINTERLAND



A183-524 COPPER-
NICKEL



A183-563 LONDON
FOG



A183-573 ASTRAL



A183-667 EARTH
TONE