

INTERWEAVE

Wallcoverings » Commercial Wallcoverings



Brand: **Bolta**

Applications: **Walls**

1300 306 399

info@baresque.com.au

baresque.com.au

1 of 5

INTERWEAVE

Wallcoverings » Commercial Wallcoverings

Interweave is a 137cm wide commercial wallcovering with an irreverent strands of shimmering threads that's available in 24 colourways.

✓ **Bleach Cleanable**

✓ **Low VOC**

Description Irreverent strands of shimmering threads create a luscious texture. Some colours of Interweave are also available in matching P3TEC - a new generation of Advanced Wall Protection. Check out the Additional Comments below or the DOWNLOADS tab for more details.

Composition Vinyl face on a woven backing Equivalent to 20oz (452 g/m²)

Environmental Info

Formaldehyde free

Heavy metals free

Perfluorooctanoic acid free

No solvent inks

Low VOC emissions. Any VOCs dissipate quickly (faster than paint) through normal ventilation and have no recognized adverse impact on indoor air quality.

Durability means products do not need to be replaced regularly due to wear and tear and being cleanable, vinyl products are ideal for helping keep commercial environments clean of bacteria.

Baresque will only deal with vinyl manufacturers that comply with applicable state and federal regulations, provide a factory that is safe and clean for its employees to work in, recycle scrap and inks during the manufacturing process to minimize waste related to production.

Roll Size 137cm wide x 27.4m - Available by the lineal metre

Fire Rating

Tested in accordance with AS ISO 9705 2003 for the purpose of determining the Group Number classification as required by the Building Code of Australia for the control of fire spread on interior wall and ceiling linings.

The result achieved was:
Classification - Group 2
Specific Extinction - Less than 250m²/kg

Lead Time

- 2-weeks (approx.) from Wednesday, subject to stock availability.
- Additional 1-week for Western Australia.
- Express delivery is available subject to a surcharge. Contact Baresque for details and pricing.

INTERWEAVE

Wallcoverings » Commercial Wallcoverings

Suggested Installation

Reverse hang / overlap and double cut.

Baresque recommends and supply Roman brand adhesives and primers.

Care Instructions

Use cloth with any of the following in preferred order of use:

1: Clear warm water

2: Mild solution of liquid detergent and warm water

3: Isopropyl Alcohol (a.k.a. rubbing alcohol)

Remove any detergent with a clean, damp cloth. Gently pat dry.

For more difficult stains, dampen a soft white cloth with a solution of household bleach (10% bleach / 90% water). Rub gently.

Rinse with a water dampened cloth to remove bleach concentration.

Do not use solvent based or concentrated abrasive cleaning agents, lacquer thinners or nail polish remover as these may cause discolouration over a period of time.

Always test in an inconspicuous area first.

If care instructions don't deliver the expected results, cease cleaning method immediately and contact Baresque for assistance.

Warranty

5-year warranty. Visit baresque.com.au/warranty for complete details.

Additional Comments

Interweave is also available in matching P3TEC design Stellar - a new generation of Advanced Wall Protection. Cross over colours are BB-TW-01, 02, 03, 04, 05, 06, 07, 08, 10, 11, 12, 13, 15, 16, 17, 18, 20, 21, 22, 23

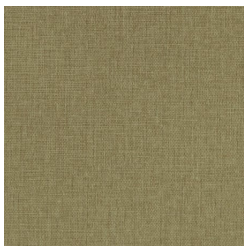
INTERWEAVE

Wallcoverings » Commercial Wallcoverings

Colour & Finish Options

COLOURWAY CARD

COLOURWAY CARD



BB-TW-02 THE RUB



BB-TW-03 BARK



BB-TW-04 GILDED
ASH



BB-TW-05 NEUTRAL
FLAKE



BB-TW-11 SCoured
GOLD



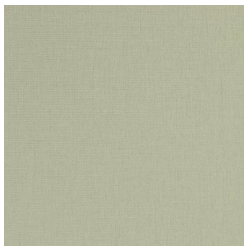
BB-TW-15 BRASSY
OLIVE



BB-TW-16 WHITE OUT



BB-TW-17 PALE
POWDER



BB-TW-19 FROSTY



BB-TW-20 BLUE
SWIPE



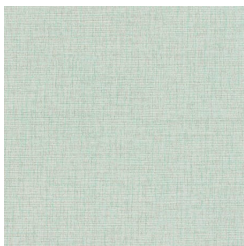
BB-TW-22 SILVER
SCRATCH



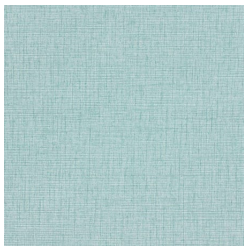
BB-TW-23 GREY LEAD



BB-TW-24 CARBON



BB-TW-25 SPRING
CLEAN



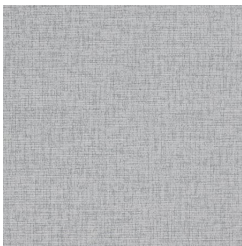
BB-TW-26 COOL
BREEZE



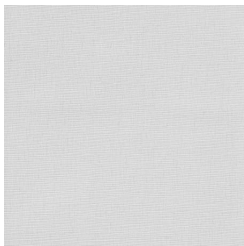
BB-TW-27 NAVY



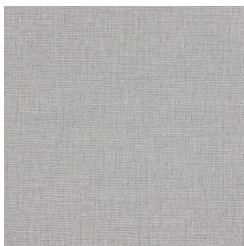
BB-TW-28 CHAMBRAY



BB-TW-29 POLISHED



BB-TW-30 PURE



BB-TW-31 GREIGE



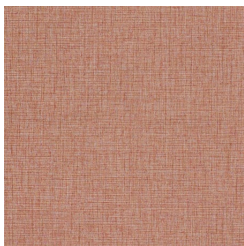
BB-TW-32 PEWTER



BB-TW-33 OATMEAL



BB-TW-34 CHEEKY



BB-TW-35

INTERWEAVE

Wallcoverings » Commercial Wallcoverings

BITTERSWEET