

IN TUNE

Wallcoverings » Commercial Wallcoverings



Brand: **Symphony**

Applications: **Walls**

1300 306 399

info@baresque.com.au

baresque.com.au

1 of 5

IN TUNE

Wallcoverings » Commercial Wallcoverings

In Tune is a 137cm wide wallcovering, a bi-directional pattern with an open weave, available in 21 colours. It's versatile, durable and easy to clean

✓ **Bleach Cleanable**

Description	Find the perfect harmony with In Tune. An open weave meets a bi-directional pattern that can be seen at a distance. A full range of 21 colours hits just the right chord.
Composition	Vinyl face on a fabric backing Equivalent to 20oz (452g/m ²)
Environmental Info	<p>Formaldehyde free</p> <p>Heavy metals free</p> <p>Perfluorooctanoic acid free</p> <p>No solvent inks</p> <p>Low VOC emissions. Any VOCs dissipate quickly (faster than paint) through normal ventilation and have no recognized adverse impact on indoor air quality.</p> <p>Durability means products do not need to be replaced regularly due to wear and tear and being cleanable, vinyl products are ideal for helping keep commercial environments clean of bacteria.</p> <p>Baresque will only deal with vinyl manufacturers that comply with applicable state and federal regulations, provide a factory that is safe and clean for its employees to work in, recycle scrap and inks during the manufacturing process to minimize waste related to production.</p>
Pattern Repeat Size	N/A
Roll Size	137cm wide x 27.4m - Available by the lineal metre
Fire Rating	<p>Tested in accordance with AS ISO 9705 2003 for the purpose of determining the Group Number classification as required by the Building Code of Australia for the control of fire spread on interior wall and ceiling linings.</p> <p>The result achieved was: Classification - Group 2 Specific Extinction - Less than 250m²/kg</p>

IN TUNE

Wallcoverings » Commercial Wallcoverings

Lead Time	<ul style="list-style-type: none">• 2-weeks (approx.) from Wednesday, subject to stock availability.• Additional 1-week for Western Australia.• Express delivery is available subject to a surcharge. Contact Baresque for details and pricing.
Suggested Installation	<p>Reverse hang / overlap and double cut.</p> <p>Baresque recommends and supply Roman brand adhesives and primers.</p>
Care Instructions	<p>Use cloth with any of the following in preferred order of use:</p> <ol style="list-style-type: none">1: Clear warm water2: Mild solution of liquid detergent and warm water3: Isopropyl Alcohol (a.k.a. rubbing alcohol) <p>Remove any detergent with a clean, damp cloth. Gently pat dry.</p> <p>For more difficult stains, dampen a soft white cloth with a solution of household bleach (10% bleach / 90% water). Rub gently.</p> <p>Rinse with a water dampened cloth to remove bleach concentration.</p> <p>Do not use solvent based or concentrated abrasive cleaning agents, lacquer thinners or nail polish remover as these may cause discolouration over a period of time.</p> <p>Always test in an inconspicuous area first.</p> <p>If care instructions don't deliver the expected results, cease cleaning method immediately and contact Baresque for assistance.</p>
Warranty	<p>5-year warranty. Visit baresque.com.au/warranty for complete details.</p>

IN TUNE

Wallcoverings » Commercial Wallcoverings

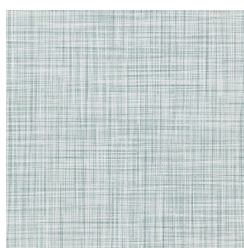
Colour & Finish Options

COLOURWAY CARD

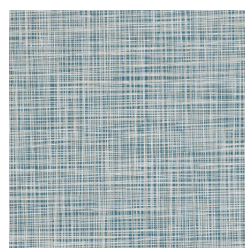
COLOURWAY CARD



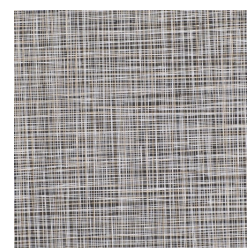
AZ53425 SAGE



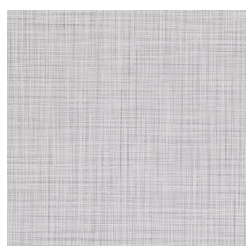
AZ53426 HINT OF
MINT



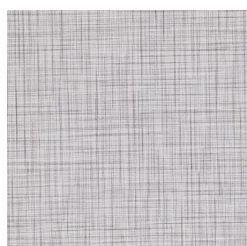
AZ53427 EMPRESS
GREEN



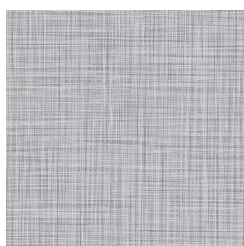
AZ53428 BLACK
LINEN



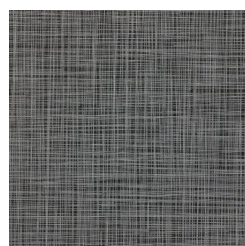
AZ53429 SILVER
SCREEN



AZ53430 SHARKSKIN



AZ53431 TIN FOIL



AZ53432 CHARCOAL



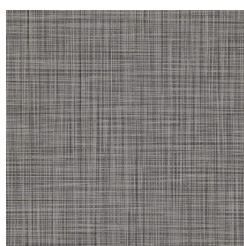
AZ53433 BEIGE
TWEED



AZ53434 LATTE



AZ53435 TAUPE



AZ53436 SHADOW



AZ53437 CREAM



AZ53438
CHAMPAGNE



AZ53439 NOD TO
NAVY



AZ53440 BLISSFUL
BLUE



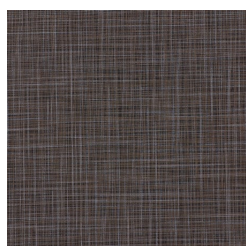
AZ53441 BRIGHT LIME



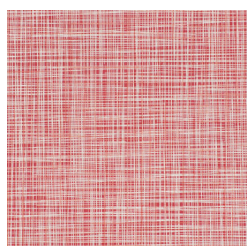
AZ53442 GOLD
OBSESSION



AZ53443 SLIGHTLY
BRONZE



AZ53444



AZ53445 REGATTA

1300 306 399

info@baresque.com.au

baresque.com.au

IN TUNE

Wallcoverings » Commercial Wallcoverings

CHOCOHOLIC

RED