

HIGH FIDELITY

Wallcoverings » Commercial Wallcoverings



Brand: **Symphony**

Applications: **Walls**

1300 306 399

info@baresque.com.au

baresque.com.au

1 of 5

HIGH FIDELITY

Wallcoverings » Commercial Wallcoverings

High Fidelity is a 137cm wide commercial wallcovering with a variation on silk and chunkier feel with metallic finishes. Available in 29 colours.

✓ **Bleach Cleanable**

Description	A variation on silk with lots of subtle depth. The time honoured look has a fresh, chunkier feel with metallic finishes that offer a light sheen. A delicate play of colours with light neutrals.
Composition	Vinyl face on a fabric backing Equivalent to 20oz (452 g/m ²)
Environmental Info	<p>Formaldehyde free</p> <p>Heavy metals free</p> <p>Perfluorooctanoic acid free</p> <p>No solvent inks</p> <p>Low VOC emissions. Any VOCs dissipate quickly (faster than paint) through normal ventilation and have no recognized adverse impact on indoor air quality.</p> <p>Durability means products do not need to be replaced regularly due to wear and tear and being cleanable, vinyl products are ideal for helping keep commercial environments clean of bacteria.</p> <p>Baresque will only deal with vinyl manufacturers that comply with applicable state and federal regulations, provide a factory that is safe and clean for its employees to work in, recycle scrap and inks during the manufacturing process to minimize waste related to production.</p>
Pattern Repeat Size	N/A
Roll Size	137cm wide x 27.4m - Available by the lineal metre
Fire Rating	<p>Tested in accordance with AS ISO 9705 2003 for the purpose of determining the Group Number classification as required by the Building Code of Australia for the control of fire spread on interior wall and ceiling linings.</p> <p>The result achieved was: Classification - Group 2 Specific Extinction - Less than 250m²/kg</p>

HIGH FIDELITY

Wallcoverings » Commercial Wallcoverings

Lead Time	<ul style="list-style-type: none">• 2-weeks (approx.) from Wednesday, subject to stock availability.• Additional 1-week for Western Australia.• Express delivery is available subject to a surcharge. Contact Baresque for details and pricing.
Suggested Installation	<p>Reverse hang / overlap and double cut.</p> <p>Baresque recommends and supply Roman brand adhesives and primers.</p>
Care Instructions	<p>Use cloth with any of the following in preferred order of use:</p> <ol style="list-style-type: none">1: Clear warm water2: Mild solution of liquid detergent and warm water3: Isopropyl Alcohol (a.k.a. rubbing alcohol) <p>Remove any detergent with a clean, damp cloth. Gently pat dry.</p> <p>For more difficult stains, dampen a soft white cloth with a solution of household bleach (10% bleach / 90% water). Rub gently.</p> <p>Rinse with a water dampened cloth to remove bleach concentration.</p> <p>Do not use solvent based or concentrated abrasive cleaning agents, lacquer thinners or nail polish remover as these may cause discolouration over a period of time.</p> <p>Always test in an inconspicuous area first.</p> <p>If care instructions don't deliver the expected results, cease cleaning method immediately and contact Baresque for assistance.</p>
Warranty	<p>5-year warranty. Visit baresque.com.au/warranty for complete details.</p>

HIGH FIDELITY

Wallcoverings » Commercial Wallcoverings

Colour & Finish Options



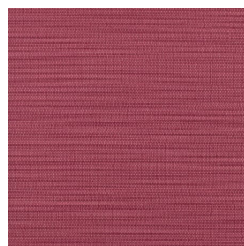
AZ52525 HEAVY
CREAM



AZ52526 FIVE STAR
GOLD



AZ52527 ORANGE
MOXIE



AZ52528 CRUSHED
BERRY



AZ52529 FINAL
STRAW



AZ52530 CRAZY FOR
CAMEL



AZ52531 BURNT
SIENNA



AZ52532 COGNAC



AZ52533 ET TU ECRU



AZ52534 DRESS
KHAKIS



AZ52535 GOLD
DIGGER



AZ52537 EDGE OF
WHITE



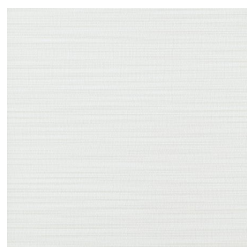
AZ52538 GO GREIGE



AZ52539 LUXURY
LINEN



AZ52540 PORCINI



AZ52541 THE WHITE
STANDARD



AZ52542 PERFECT
PUTTY



AZ52543 GREY
EXPECTATIONS



AZ52544 IN SHADOW



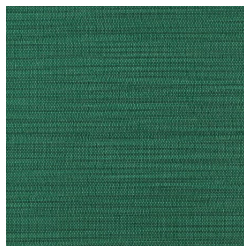
AZ52545 CHROME
PLATED



AZ52546 SILVER



AZ52547 INDIGO BLUE



AZ52548 RUNWAY



AZ52549 GEMINI

1300 306 399

info@baresque.com.au

baresque.com.au

HIGH FIDELITY

Wallcoverings » Commercial Wallcoverings

LINING

EMERALD

GREY

1300 306 399

info@baresque.com.au

baresque.com.au

5 of 5